



# Chisholm Street Wharf Update: Detailed Design



# IMAGINE WHAT YOU CAN DO HERE

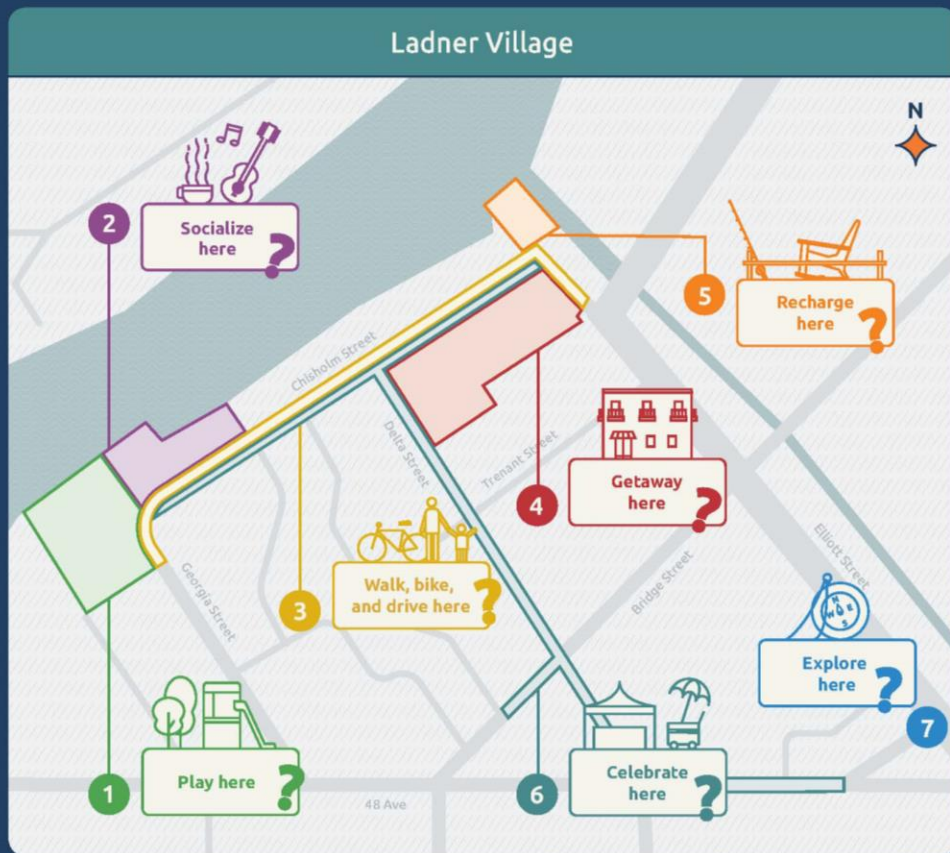


The City of Delta is moving forward on plans to revitalize Ladner Village and the community is invited to get involved. Here are the seven big projects that will advance over the next few years and suggestions on how residents can participate. Do you have ideas on the projects now? Let us know at [letstalk.delta.ca/Ladner-Village](mailto:letstalk.delta.ca/Ladner-Village). We're gathering your input as we prepare to move these recommendations forward.

SCAN TO LEARN MORE.



Delta



## 1 Play here?

The plan envisions a destination playground at Spot-on-the-Water Park. The community will help confirm the plan and select the playground concept and equipment.

## 2 Socialize here?

Upgrades to the Chisholm Street Wharf will make it safe for year-round use and create a place to get together. The community will help identify events and activations for this unique venue at the former Seven Seas site.

## 3 Walk, bike, and drive here?

A new multi-use pathway and changes to the flow of Chisholm Street are being considered to make the street safe for drivers, cyclists, and pedestrians. The community will be invited to review the changes to traffic patterns in the area before a decision is made.

## 4 Getaway here?

A new tourist accommodation with amenities on the former Delta Hotel site aims to inject vibrancy into Ladner Village and support local businesses. The community will have the opportunity to provide input as a concept for the site takes shape.

## 5 Recharge here?

Efforts to restore the natural environment, rebuild the wharf and add seating aim to make the Elliott Street Wharf a place to enjoy views of the Fraser River and gorgeous sunsets. The community will be invited to comment on the design and suggest activations at this waterfront gateway.

## 6 Celebrate here?

Building on the success of previous pop-up parks on Bridge Street, the City is proposing to add pedestrian fun to more streets in Ladner Village during the summer season. The community will be invited to confirm the location and suggest activities and events to draw the community and visitors to the area.

## 7 Explore here?

A vibrant branding, signage and wayfinding strategy aims to make it easier for locals and visitors to explore Ladner Village. The community will help define its identity and beautify the streets with banners, murals, and signage that celebrate the area.

# ENGAGEMENT SNAPSHOT



## How We Informed



**1,676**

Visitors to the website

**102,887**

People reached on social media



**9**

Social media posts

**2**

Full Page Newspaper Ads



**1**

Letter to Residents

**6,085**

E-blast subscribers reached



## How People Engaged



**1**

Pop Up Event

**77**

Completions of Feedback Form



**1,923**

Interactions with Design Concept Document

**75**

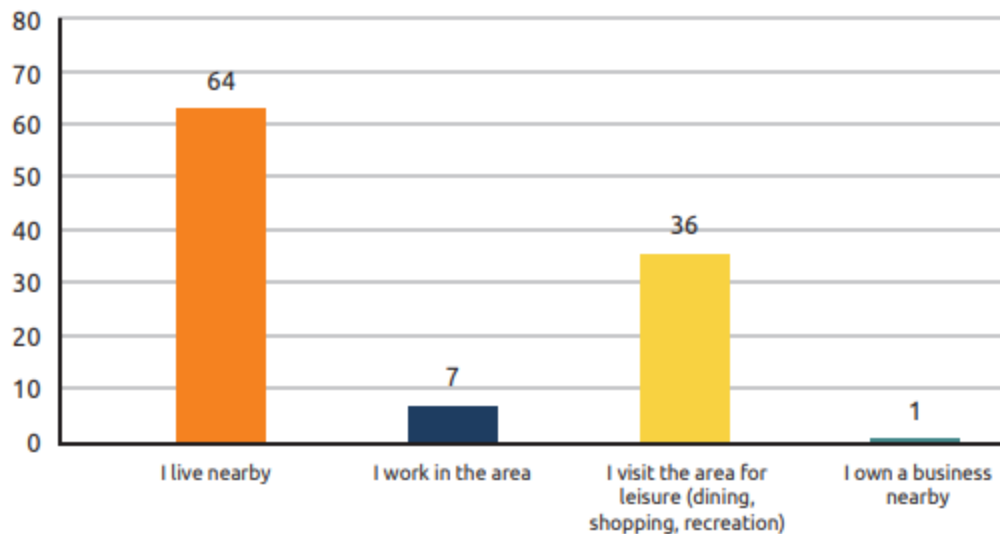
Pop Up Event Participants



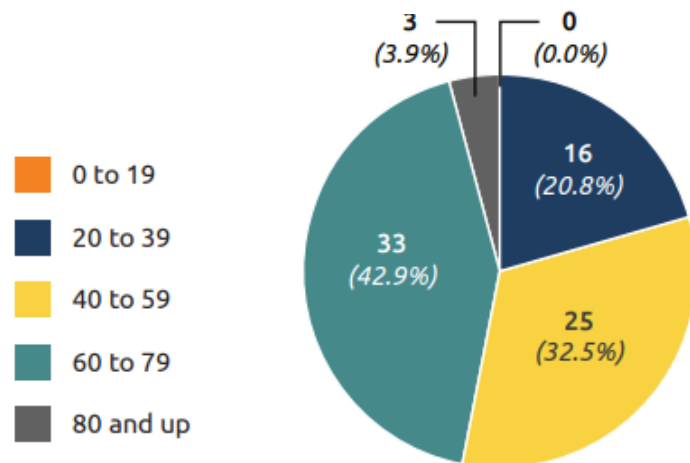
# WHO WE HEARD FROM



Q4: What is your connection to the Chisholm Street Wharf?



Q5: Please select your age group.

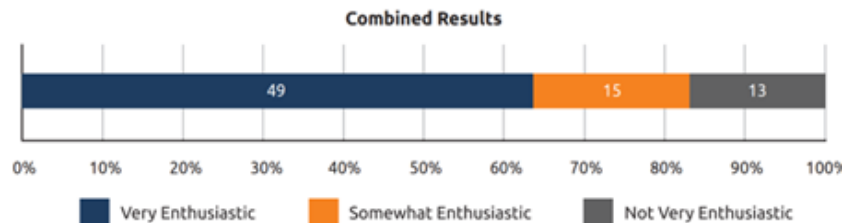




# WHAT WE HEARD



Q7: Rate your level of enthusiasm for the upgrades proposed for the Chisholm St. Wharf?



Catenary lighting over the wharf and dike pathway to create a welcoming evening space

Modular honeycomb-shaped furniture providing seating and flexibility for events

Upgraded dike pathway with planters, trees, and durable interlocking pavers

Finished dike wall with a colourful façade to add vibrancy to the waterfront

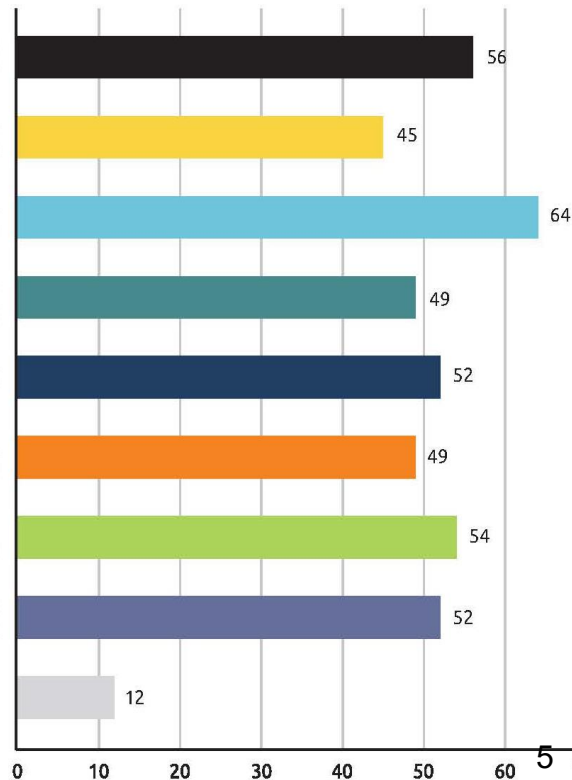
Illuminated accessible pathway, drawing pedestrians onto the wharf

Space for semi-permanent food containers, food trucks, and picnic tables

Shade trees, small table shades, and misting stations during the summer heat

Passive space and picnic opportunities in Spot-on-the-Water park

Other (please specify)

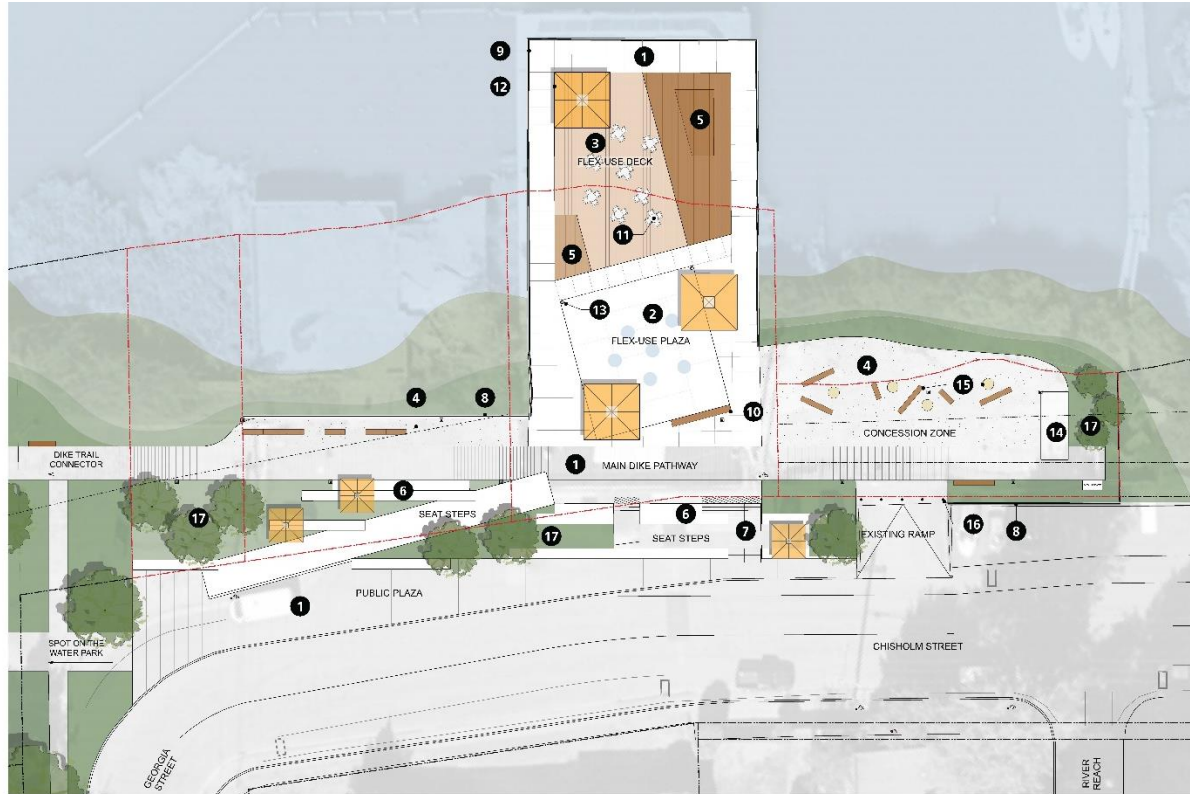


# WHAT WE HEARD



- Create vibrant and inclusive space with year-round programming, and events.
- Include greenery, shaded areas, and accessible pathways.
- Celebrate Ladner's heritage through historical elements, public art, and architecture.
- Balance human activity with environmental preservation; minimize light pollution, protect wildlife, and add pollinator-friendly plants and trees.
- Concerns about traffic, building height, costs, and the balance between modernizing elements and heritage preservation.
- Upgrade public washrooms, improve parking, ensure pedestrian and bike pathway connectivity.

# CHISHOLM STREET WHARF DETAILED DESIGN

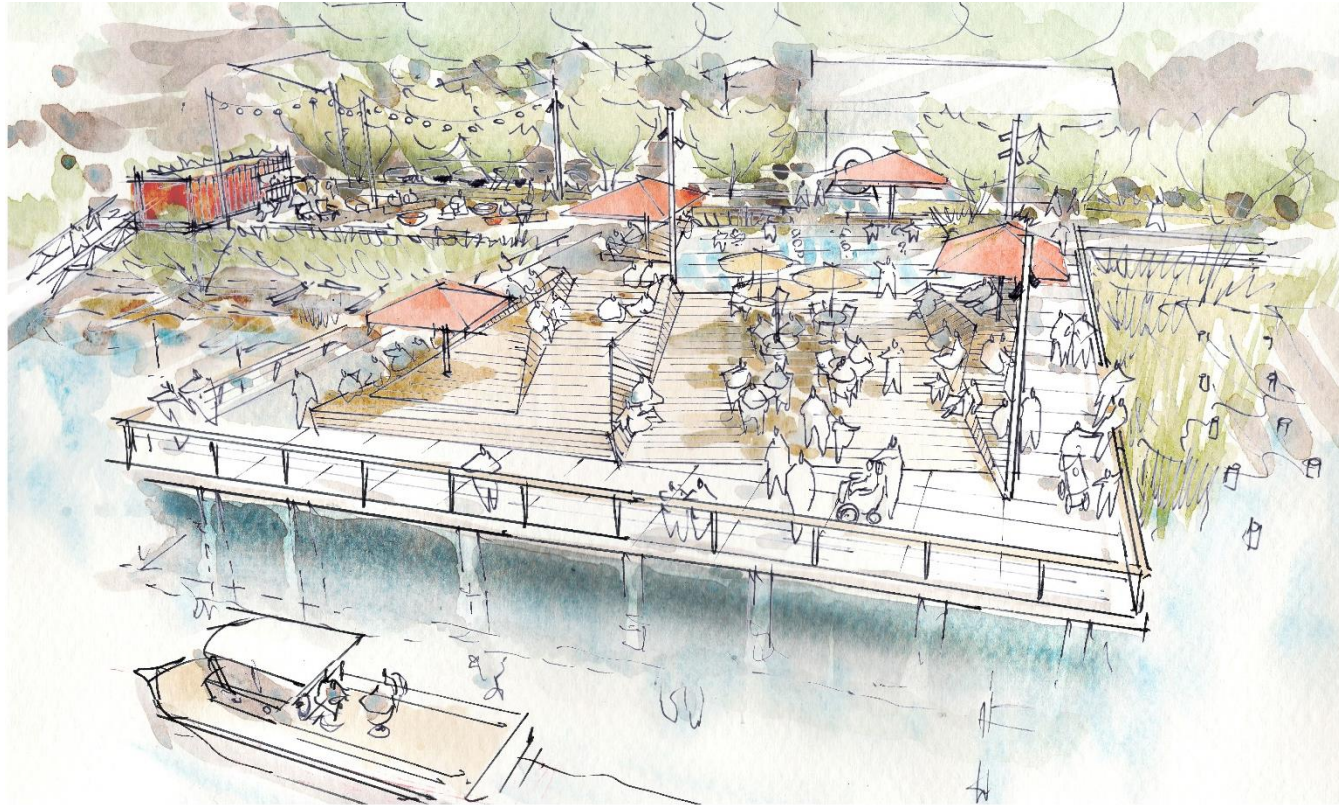


# CHISHOLM STREET WHARF DETAILED DESIGN





# CHISHOLM STREET WHARF DETAILED DESIGN



# CHISHOLM STREET WHARF DETAILED DESIGN



# COUNCIL RECOMMENDATIONS



THAT the Phase One Community Engagement Summary for the Chisholm Street Wharf be received as information.

THAT staff consult with the community on the updated Chisholm Street Wharf design and report back to Council with a summary of the engagement results.



# NEXT STEPS



- June 24 – July 11, 2025 – Phase 2 Community Engagement
- July 28, 2025 – Report on Engagement Results / Final Design
- Summer / Fall 2025 – Finalize Design Package and Tender
- Late Spring 2026 – Targeted Completion



Questions?  
Revite-the-Village@delta.ca



Facebook  
**CityofDeltaBC**



Twitter  
**CityofDeltaBC**



Instagram  
**CityofDeltaBC**

