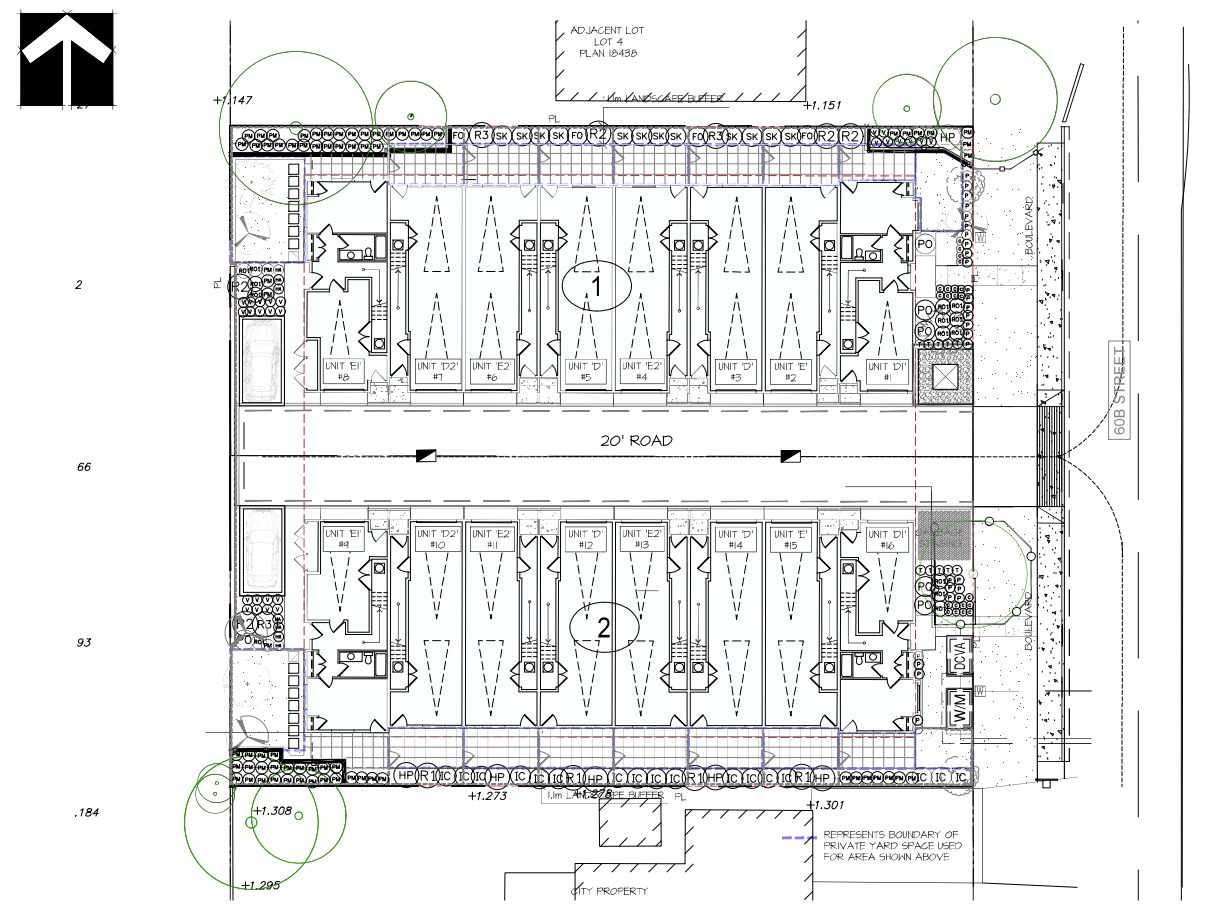
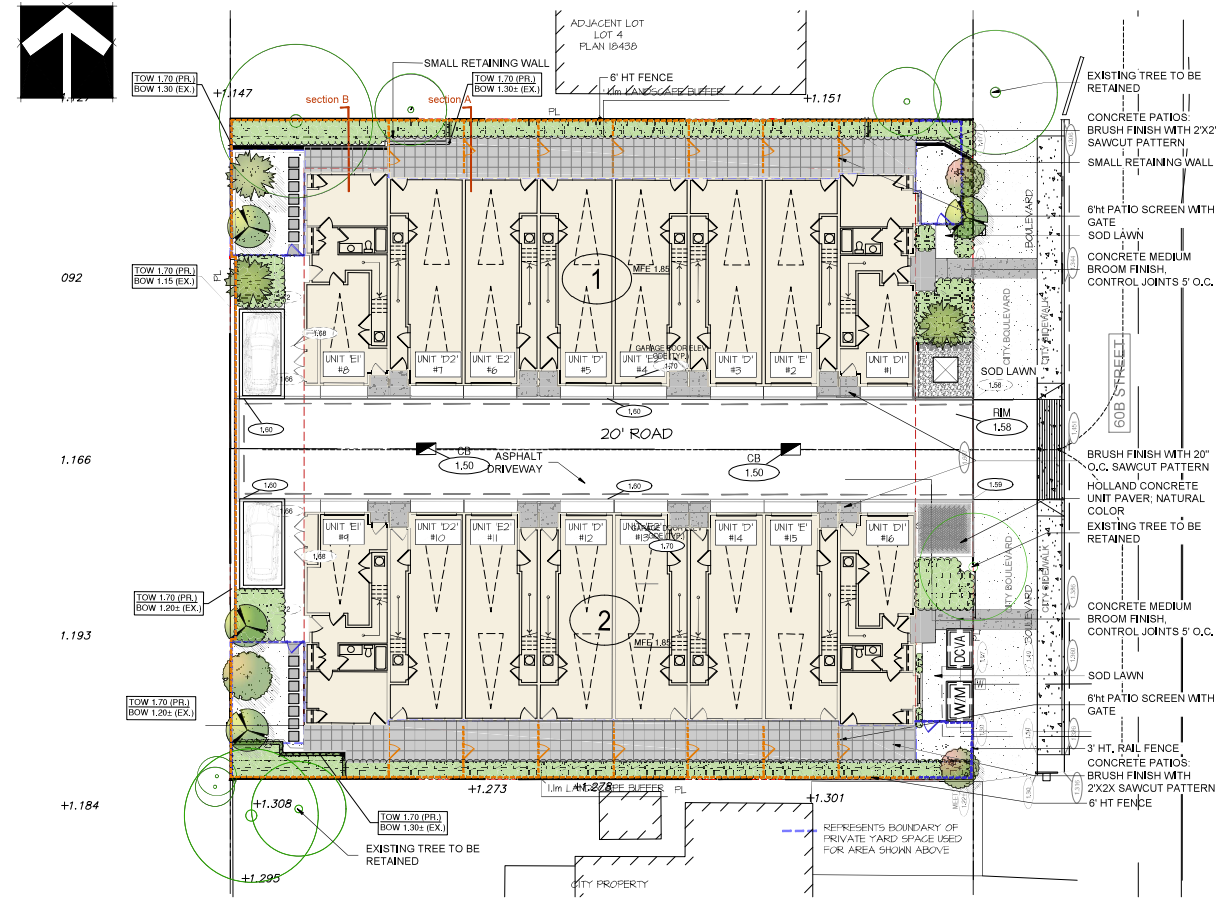


© Copyright reserved. This drawing and design is the property of PMG Landscape Architects and may not be reproduced or used for other projects without their permission.

**pmg**  
LANDSCAPE ARCHITECTS  
Suite C100 - 4185 Still Creek Drive  
Burnaby, British Columbia, V5C 6G9  
p: 604 294-0011 ; f: 604 294-0022

SEAL:

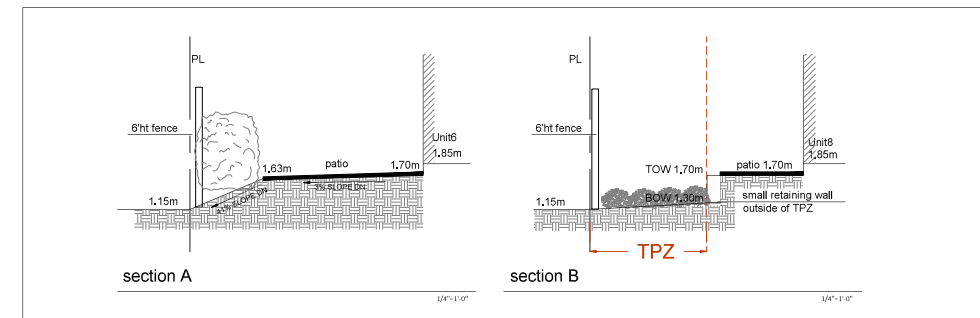


PLANT SCHEDULE				PMG PROJECT NUMBER: 24-154
KEY	QTY	BOTANICAL NAME	COMMON NAME	PLANTED SIZE / REMARKS
TREE	2	ACER RUBRUM 'OCTOBER GLORY'	OCTOBER GLORY MAPLE	7CM CAL, 1.8M STD, B&B

NOTES: \* PLANT SIZES IN THIS LIST ARE SPECIFIED ACCORDING TO THE BC LANDSCAPE STANDARD AND CANADIAN LANDSCAPE STANDARD, LATEST EDITION. CONTAINER SIZES SPECIFIED AS PER CNLA STANDARD, BOTH PLANT SIZE AND CONTAINER SIZE ARE THE MINIMUM ACCEPTABLE SIZES. \* REFER TO SPECIFICATIONS FOR DEFINED CONTAINER MEASUREMENTS AND OTHER PLANT MATERIAL REQUIREMENTS. \* SEARCH AND REVIEW MAKE PLANT MATERIAL AVAILABLE FOR OPTIONAL REVIEW BY LANDSCAPE ARCHITECT AT SOURCE OF SUPPLY. AREA OF SEARCH TO INCLUDE LOWER MAINLAND AND FRASER VALLEY. \* SUBSTITUTIONS: OBTAIN WRITTEN APPROVAL FROM THE LANDSCAPE ARCHITECT PRIOR TO MAKING ANY SUBSTITUTIONS TO THE SPECIFIED MATERIAL. UNAPPROVED SUBSTITUTIONS WILL BE REJECTED. ALLOW A MINIMUM OF FIVE DAYS PRIOR TO DELIVERY FOR REQUEST TO SUBSTITUTE. SUBSTITUTIONS ARE SUBJECT TO BC LANDSCAPE STANDARD AND CANADIAN LANDSCAPE STANDARD - DEFINITION OF CONDITIONS OF AVAILABILITY. \* ALL LANDSCAPE MATERIAL AND WORKMANSHIP MUST MEET OR EXCEED BC LANDSCAPE STANDARD AND CANADIAN LANDSCAPE STANDARD LATEST EDITION. \* ALL PLANT MATERIAL MUST BE PROVIDED FROM CERTIFIED DISEASE FREE NURSERY. \* BIO-SOLIDS NOT PERMITTED IN GROWING MEDIUM UNLESS AUTHORIZED BY LANDSCAPE ARCHITECT.

PLANT SCHEDULE				PMG PROJECT NUMBER: 24-154
KEY	QTY	BOTANICAL NAME	COMMON NAME	PLANTED SIZE / REMARKS
TREE	2	CERCIS CANADENSIS 'FOREST PANSY'	FOREST PANSY REDBUD	7CM CAL, B&B; CLIMATE RESILIENT
	1	GINKGO BILOBA 'PRINCETON SENTRY'	PRINCETON SENTRY MAIDENHAIR	7CM CAL, 2M STD; B&B; CLIMATE RESILIENT
	4	LIQUIDAMBAR STYRACIFLUA 'SLENDER SILHOUETTE'	SLENDER SILHOUETTE SWEETGUM	7CM CAL, B&B; CLIMATE RESILIENT
	3	PICEA OMORICA 'BRUNS'	BRUNS SERBIAN SPRUCE	3.0M HT, B&B; CLIMATE RESILIENT

NOTES: \* PLANT SIZES IN THIS LIST ARE SPECIFIED ACCORDING TO THE BC LANDSCAPE STANDARD AND CANADIAN LANDSCAPE STANDARD, LATEST EDITION. CONTAINER SIZES SPECIFIED AS PER CNLA STANDARD, BOTH PLANT SIZE AND CONTAINER SIZE ARE THE MINIMUM ACCEPTABLE SIZES. \* REFER TO SPECIFICATIONS FOR DEFINED CONTAINER MEASUREMENTS AND OTHER PLANT MATERIAL REQUIREMENTS. \* SEARCH AND REVIEW MAKE PLANT MATERIAL AVAILABLE FOR OPTIONAL REVIEW BY LANDSCAPE ARCHITECT AT SOURCE OF SUPPLY. AREA OF SEARCH TO INCLUDE LOWER MAINLAND AND FRASER VALLEY. \* SUBSTITUTIONS: OBTAIN WRITTEN APPROVAL FROM THE LANDSCAPE ARCHITECT PRIOR TO MAKING ANY SUBSTITUTIONS TO THE SPECIFIED MATERIAL. UNAPPROVED SUBSTITUTIONS WILL BE REJECTED. ALLOW A MINIMUM OF FIVE DAYS PRIOR TO DELIVERY FOR REQUEST TO SUBSTITUTE. SUBSTITUTIONS ARE SUBJECT TO BC LANDSCAPE STANDARD AND CANADIAN LANDSCAPE STANDARD - DEFINITION OF CONDITIONS OF AVAILABILITY. \* ALL LANDSCAPE MATERIAL AND WORKMANSHIP MUST MEET OR EXCEED BC LANDSCAPE STANDARD AND CANADIAN LANDSCAPE STANDARD LATEST EDITION. \* ALL PLANT MATERIAL MUST BE PROVIDED FROM CERTIFIED DISEASE FREE NURSERY. \* BIO-SOLIDS NOT PERMITTED IN GROWING MEDIUM UNLESS AUTHORIZED BY LANDSCAPE ARCHITECT.



PLANT SCHEDULE				PMG PROJECT NUMBER: 24-154
KEY	QTY	BOTANICAL NAME	COMMON NAME	PLANTED SIZE / REMARKS
SHRUB	4	FOTHERGILLA MAJOR 'MOUNT ARY'	MOUNT ARY FOTHERGILLA	#3 POT, 60CM
	6	HYDRANGEA PANICULATA 'WM'S RED'	FIRE & ICE HYDRANGEA	#3 POT, 60CM
	17	ILEX CRENATA 'CONVEXA'	JAPANESE HOLLY	#3 POT, 50CM
	6	PRUNUS LAUROCERASUS 'OTTO LUYKEN'	OTTO LUYKEN LAUREL	#3 POT, 50CM
	4	RHODODENDRON 'BOW BELLS'	RHODODENDRON, PINK	#3 POT, 30CM
	5	RHODODENDRON 'HOTEI'	RHODODENDRON, CANARY YELLOW	#3 POT, 50CM
	3	RHODODENDRON 'PURPLE SPLENDOR'	RHODODENDRON, DARK PURPLE; L. MAY	#3 POT, 50CM
	14	ROSA MEDELAND 'BONICA'	MEDELAND ROSE; PINK	#2 POT, 40CM
	12	SKIMMIA JAPONICA (10% MALE)	JAPANESE SKIMMIA	#3 POT, 50CM
	10	TAXUS X MEDIA 'HATFIELDII'	HATFIELD YEW	1.5M B&B
GRASS	21	CAREX OSHIMENSIS 'EVERGOLD'	EVERGOLD JAPANESE SEDGE	#1 POT
	7	HAKONECHLOA MACRA 'AUREOLA'	GOLD VARIEGATED JAPANESE FOREST GRASS	#1 POT
	29	PENNISETUM ORIENTALE	ORIENTAL FOUNTAIN GRASS	#1 POT
GC	70	POLYSTICHUM MUNITUM	WESTERN SWORD FERN	#1 POT, 25CM
	26	VACCINIUM VITIS-IDAEA	LINGONBERRY	#1 POT, 30CM

NOTES: \* PLANT SIZES IN THIS LIST ARE SPECIFIED ACCORDING TO THE BC LANDSCAPE STANDARD AND CANADIAN LANDSCAPE STANDARD, LATEST EDITION. CONTAINER SIZES SPECIFIED AS PER CNLA STANDARD, BOTH PLANT SIZE AND CONTAINER SIZE ARE THE MINIMUM ACCEPTABLE SIZES. \* REFER TO SPECIFICATIONS FOR DEFINED CONTAINER MEASUREMENTS AND OTHER PLANT MATERIAL REQUIREMENTS. \* SEARCH AND REVIEW MAKE PLANT MATERIAL AVAILABLE FOR OPTIONAL REVIEW BY LANDSCAPE ARCHITECT AT SOURCE OF SUPPLY. AREA OF SEARCH TO INCLUDE LOWER MAINLAND AND FRASER VALLEY. \* SUBSTITUTIONS: OBTAIN WRITTEN APPROVAL FROM THE LANDSCAPE ARCHITECT PRIOR TO MAKING ANY SUBSTITUTIONS TO THE SPECIFIED MATERIAL. UNAPPROVED SUBSTITUTIONS WILL BE REJECTED. ALLOW A MINIMUM OF FIVE DAYS PRIOR TO DELIVERY FOR REQUEST TO SUBSTITUTE. SUBSTITUTIONS ARE SUBJECT TO BC LANDSCAPE STANDARD AND CANADIAN LANDSCAPE STANDARD - DEFINITION OF CONDITIONS OF AVAILABILITY. \* ALL LANDSCAPE MATERIAL AND WORKMANSHIP MUST MEET OR EXCEED BC LANDSCAPE STANDARD AND CANADIAN LANDSCAPE STANDARD LATEST EDITION. \* ALL PLANT MATERIAL MUST BE PROVIDED FROM CERTIFIED DISEASE FREE NURSERY. \* BIO-SOLIDS NOT PERMITTED IN GROWING MEDIUM UNLESS AUTHORIZED BY LANDSCAPE ARCHITECT.

NO.	DATE	REVISION DESCRIPTION	DR.
15	26-MAR-31	ARCH COMMENTS	DD
14	26-MAR-24	NEW SITE PLAN	DD
13	26-MAR-16	NEW CIVIL PLAN	DD
12	26-MAR-12	NEW CIVIL PLAN	DD
11	26-MAR-10	NEW SITE AND CIVIL PLANS & ARBORIST REPORT	DD
10	26-JAN-23	NEW CIVIL PLAN	DD
9	26-JAN-14	NEW SITE PLAN	DD
8	25-SEP-29	NEW SITE PLAN	DD
7	25-AUG-13	NEW SITE PLAN & CITY COMMENTS	DD
6	25-AUG-08	NEW SITE PLAN	DD
5	25-JUL-17	NEW SITE PLAN	DD
4	25-APR-23	NEW SITE PLAN	JL
3	24-OCT-25	CIVIL COORDINATION	JL
2	24-OCT-18	NEW SITE PLAN	JL
1	24-OCT-15	NEW SITE PLAN	JL

CLIENT:

PROJECT:

**MULTI RESIDENTIAL**  
**4729, 4739, 4749 60B STREET**  
**DELTA, B.C.**

DRAWING TITLE:  
**LANDSCAPE PLAN**

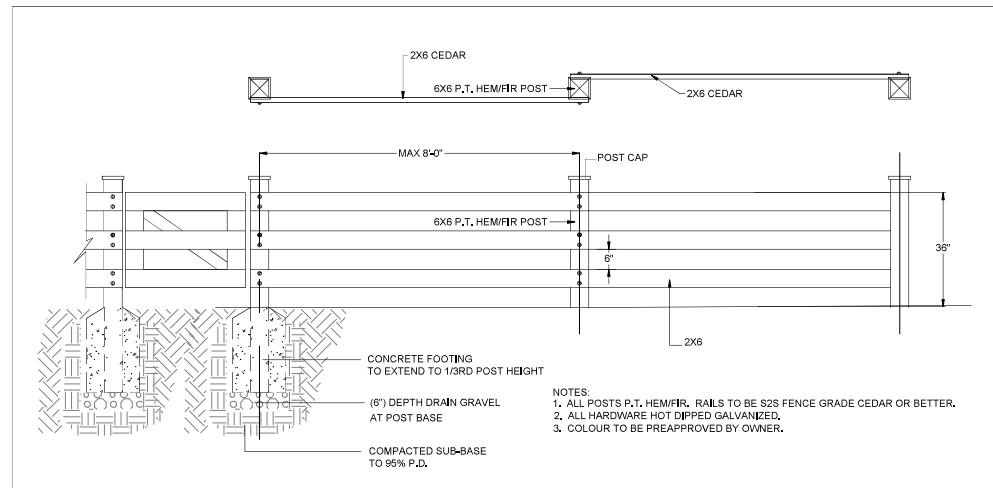
DATE: 24-AUG-26 DRAWING NUMBER:  
SCALE: 1/16"=1'-0"  
DRAWN: MM  
DESIGN: MM  
CHKD: BA

**L1**  
OF 3

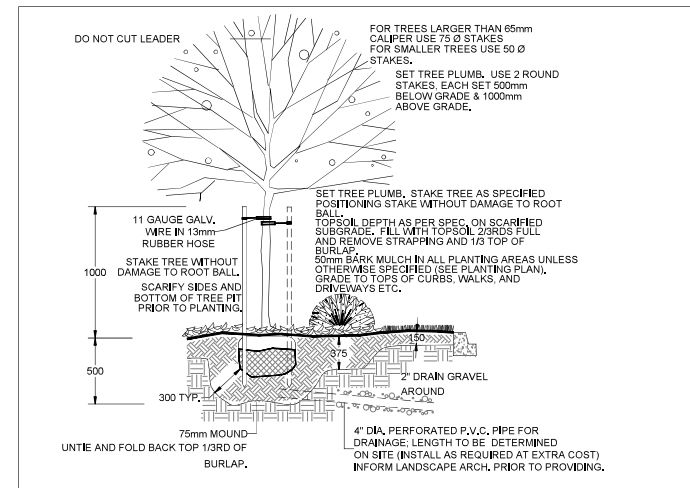
© Copyright reserved. This drawing and design is the property of PMG Landscape Architects and may not be reproduced or used for other projects without their permission.

**pmg**  
LANDSCAPE ARCHITECTS  
Suite C100 - 4185 Still Creek Drive  
Burnaby, British Columbia, V5C 6G9  
p: 604 294-0011 ; f: 604 294-0022

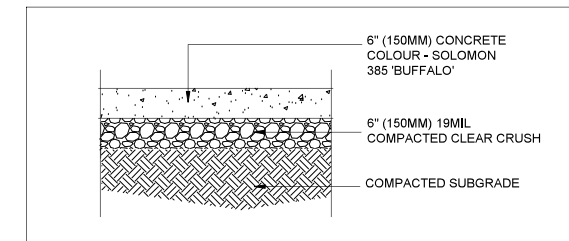
SEAL:



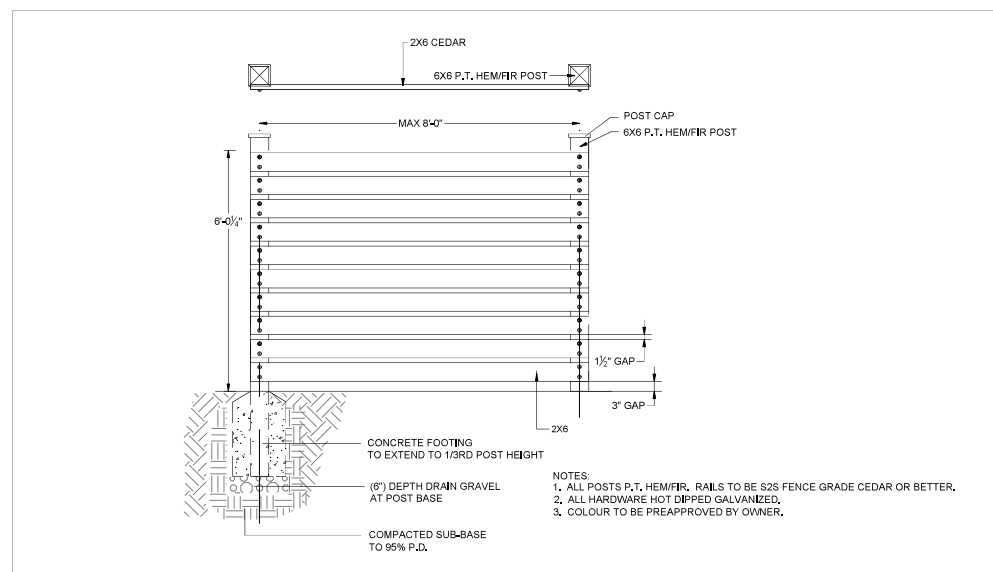
**1** 3ft HT CEDAR RAIL FENCE AND POST  
1/2"=1'-0"



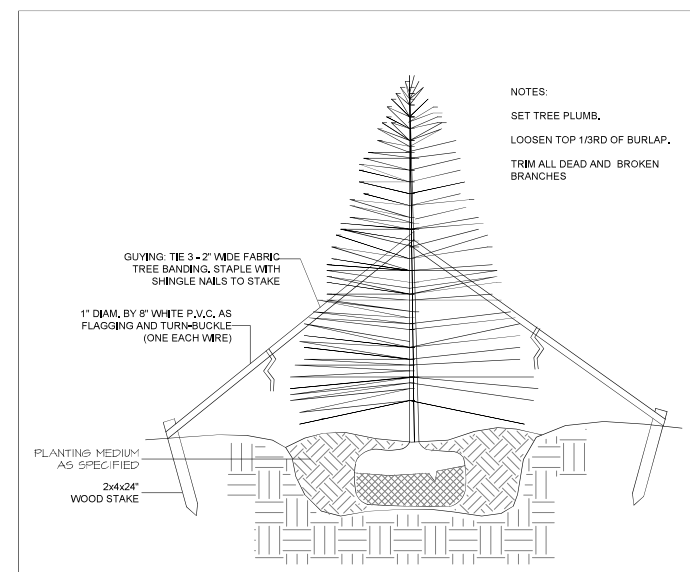
**3** TREE PLANTING DETAIL  
1/2"=1'-0"



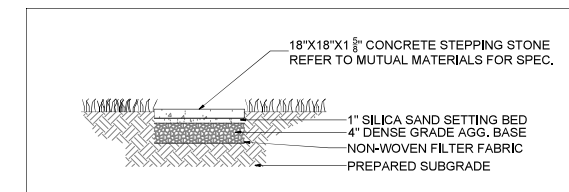
**5** CONCRETE PAVING  
1/2"=1'-0"



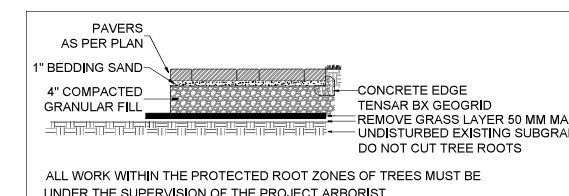
**2** 6ft HT CEDAR PATIO SCREEN  
1/2"=1'-0"



**4** CONIFER PLANTING DETAIL  
1/2"=1'-0"



**6** 2' X2' STEPPING STONE  
1/2"=1'-0"



**7** PAVER DETAIL THROUGH ROOT ZONE  
1/2"=1'-0"

NO.	DATE	REVISION DESCRIPTION	DR.
15	26-MAR-31	ARCH COMMENTS	DD
14	26-MAR-24	NEW SITE PLAN	DD
13	26-MAR-16	NEW CIVIL PLAN	DD
12	26-MAR-12	NEW CIVIL PLAN	DD
11	26-MAR-10	NEW SITE AND CIVIL PLANS & ARBORIST REPORT	DD
10	26-JAN-23	NEW CIVIL PLAN	DD
9	26-JAN-14	NEW SITE PLAN	DD
8	25-SEP-29	NEW SITE PLAN	DD
7	25-AUG-13	NEW SITE PLAN & CITY COMMENTS	DD
6	25-AUG-08	NEW SITE PLAN	DD
5	25-JUL-17	NEW SITE PLAN	DD
4	25-APR-23	NEW SITE PLAN	JL
3	24-OCT-25	CIVIL COORDINATION	JL
2	24-OCT-18	NEW SITE PLAN	JL
1	24-OCT-15	NEW SITE PLAN	JL

CLIENT:

PROJECT:

**MULTI RESIDENTIAL**  
4729, 4739, 4749 60B STREET  
DELTA, B.C.

DRAWING TITLE:

**LANDSCAPE DETAILS**

DATE: 24-AUG-26 DRAWING NUMBER:

SCALE:

DRAWN: MM

DESIGN: MM

CHKD: BA

**L2**

OF 3

24154-14.ZIP

PMG PROJECT NUMBER:

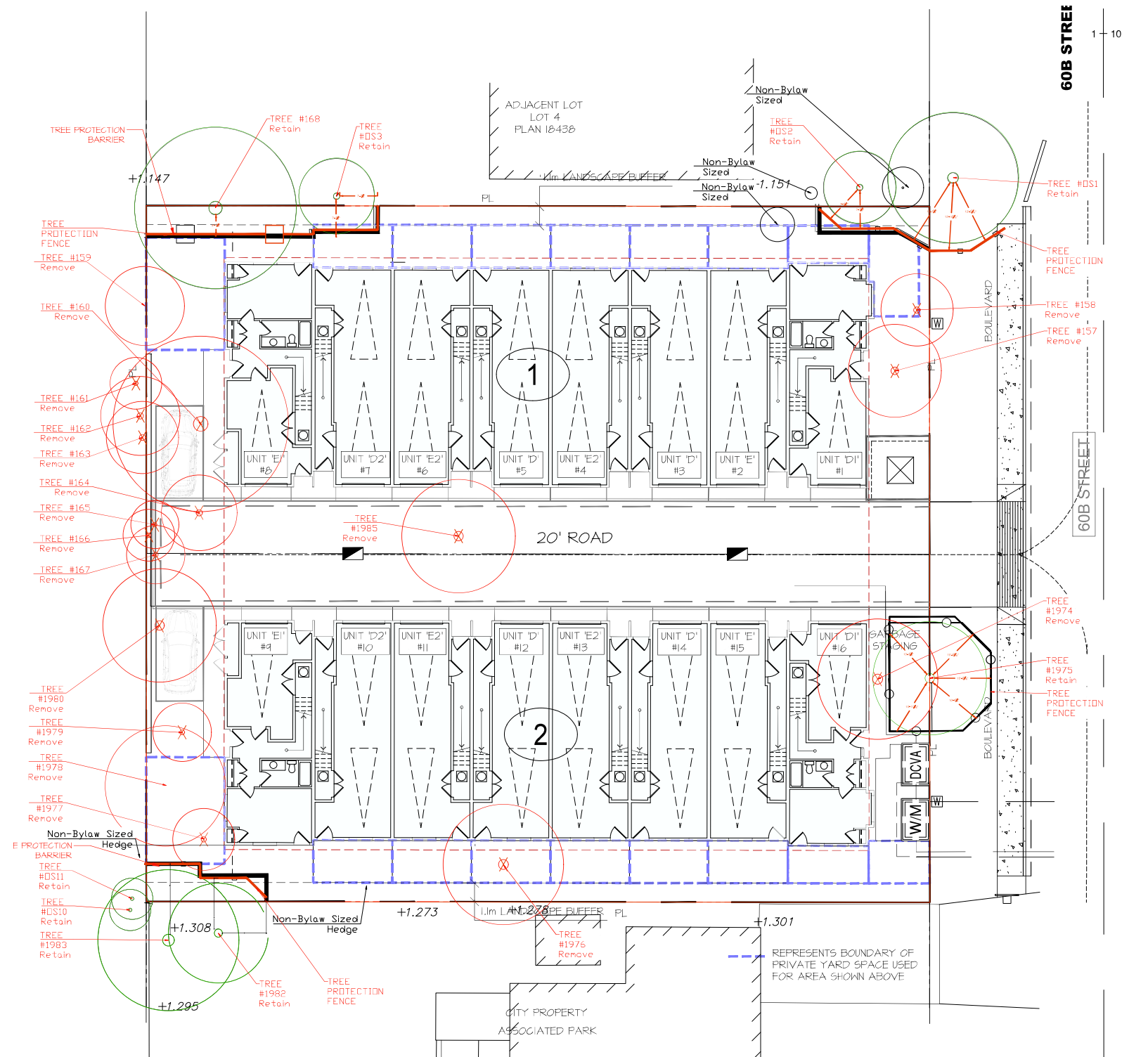
24-154



© Copyright reserved. This drawing and design is the property of PMG Landscape Architects and may not be reproduced or used for other projects without their permission.

**pmg**  
LANDSCAPE ARCHITECTS  
Suite C100 - 4185 Still Creek Drive  
Burnaby, British Columbia, V5C 6G9  
p: 604 294-0011 ; f: 604 294-0022

SEAL:



NO.	DATE	REVISION DESCRIPTION	DR.
15	26.MAR.31	ARCH COMMENTS	DD
14	26.MAR.24	NEW SITE PLAN	DD
13	26.MAR.16	NEW CIVIL PLAN	DD
12	26.MAR.12	NEW CIVIL PLAN	DD
11	26.MAR.10	NEW SITE AND CIVIL PLANS & ARBORIST REPORT	DD
10	26.JAN.23	NEW CIVIL PLAN	DD
9	26.JAN.14	NEW SITE PLAN	DD
8	25.SEP.29	NEW SITE PLAN	DD
7	25.AUG.13	NEW SITE PLAN & CITY COMMENTS	DD
6	25.AUG.08	NEW SITE PLAN	DD
5	25.JUL.17	NEW SITE PLAN	DD
4	25.APR.23	NEW SITE PLAN	JL
3	24.OCT.25	CIVIL COORDINATION	JL
2	24.OCT.18	NEW SITE PLAN	JL
1	24.OCT.15	NEW SITE PLAN	JL

CLIENT:

PROJECT:

**MULTI RESIDENTIAL**  
**4729, 4739, 4749 60B STREET**  
**DELTA, B.C.**

DRAWING TITLE:  
**TREE MANAGEMENT PLAN**

DATE: 24.AUG.26 DRAWING NUMBER:  
SCALE: 3/32"=1'-0"  
DRAWN: MM  
DESIGN: MM  
CHKD: BA

**L3**  
OF 3