

<b>MAIN STREET:</b>	56 STREET
<b>CROSS STREET:</b>	12 AVENUE
<b>OUTSIDE/OPP:</b>	1299A 56 Street
<b>MUNICIPALITY:</b>	DELTA, BC
<b>KNOWN AS:</b>	TSWAAWWASSEN SHOPPING CENTRE (REV. A)

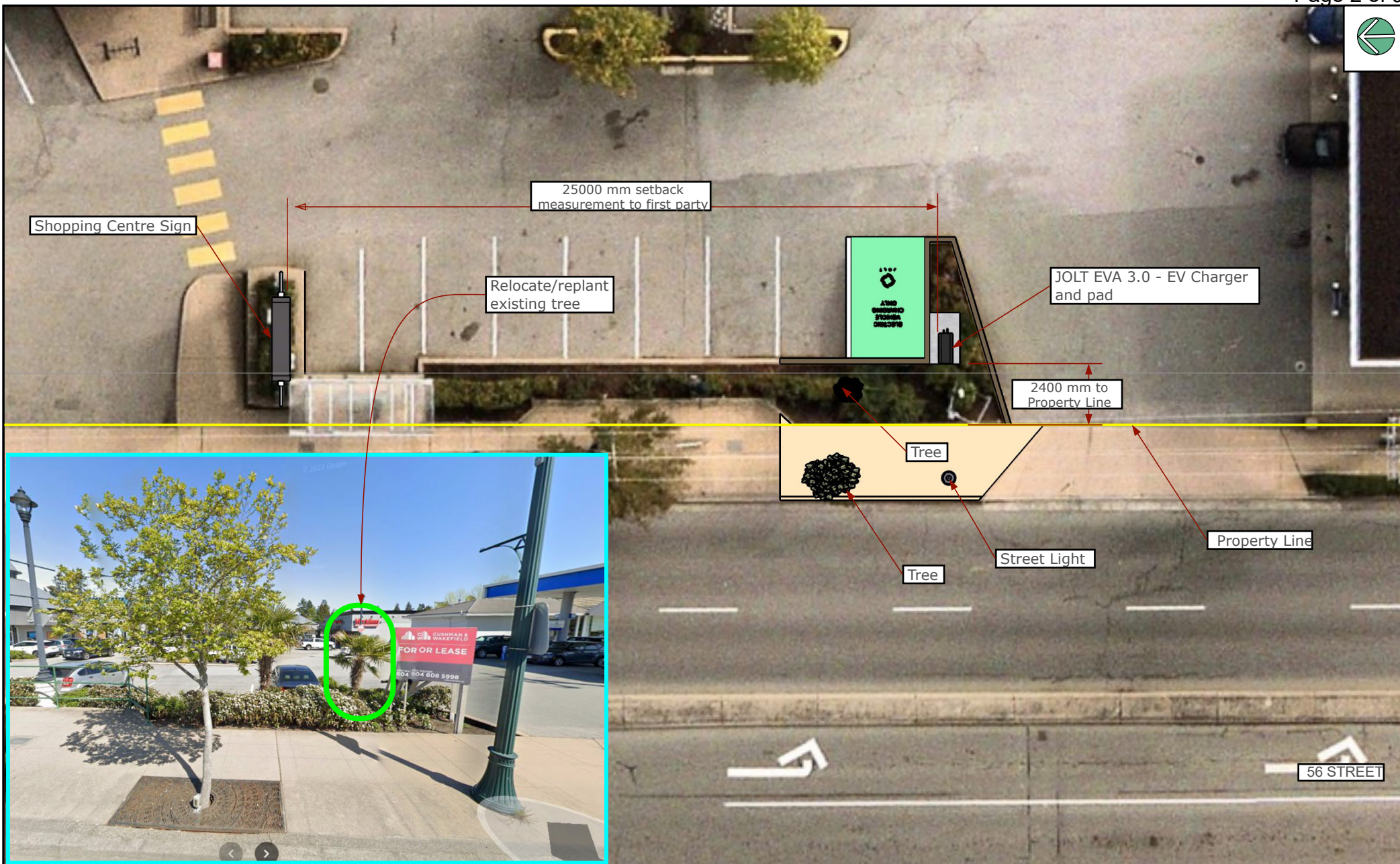


ISSUE	DESCRIPTION	DATE	DRAWN
A	DA DRAWING	04.05.25	J. STEELE

**THIS DRAWING IS THE PROPERTY OF JOLT CHARGE AND SHALL NOT BE COPIED IN PART OF WHOLE WITHOUT AUTHORISATION**

JOLT CHARGE PTY LTD  
1 SUSSEX ST SYDNEY 2000, SYDNEY NSW 2000

<b>CITY OF DELTA, BC</b>			
SHEET: LOCATION			
DATE	SCALE	SITE NUMBER	REVISION
04.05.25	NA	NA	A



MAIN STREET:	56 STREET
CROSS STREET:	12 AVENUE
OUTSIDE/OPP:	299A 56 Street
MUNICIPALITY:	DELTA, BC
KNOWN AS:	TSWAAWWASSEN SHOPPING CENTRE (REV. A)



ISSUE	DESCRIPTION	DATE DRAWN	DATE REVISED
A	DA DRAWING		

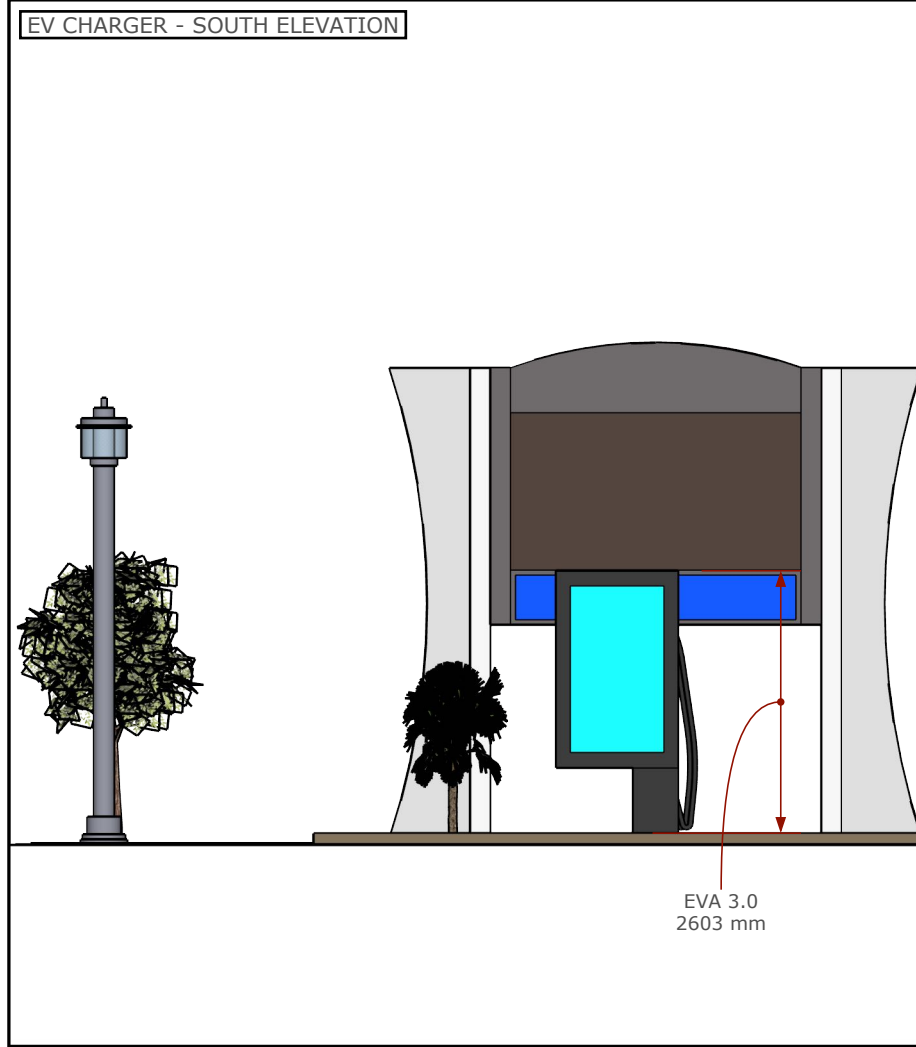
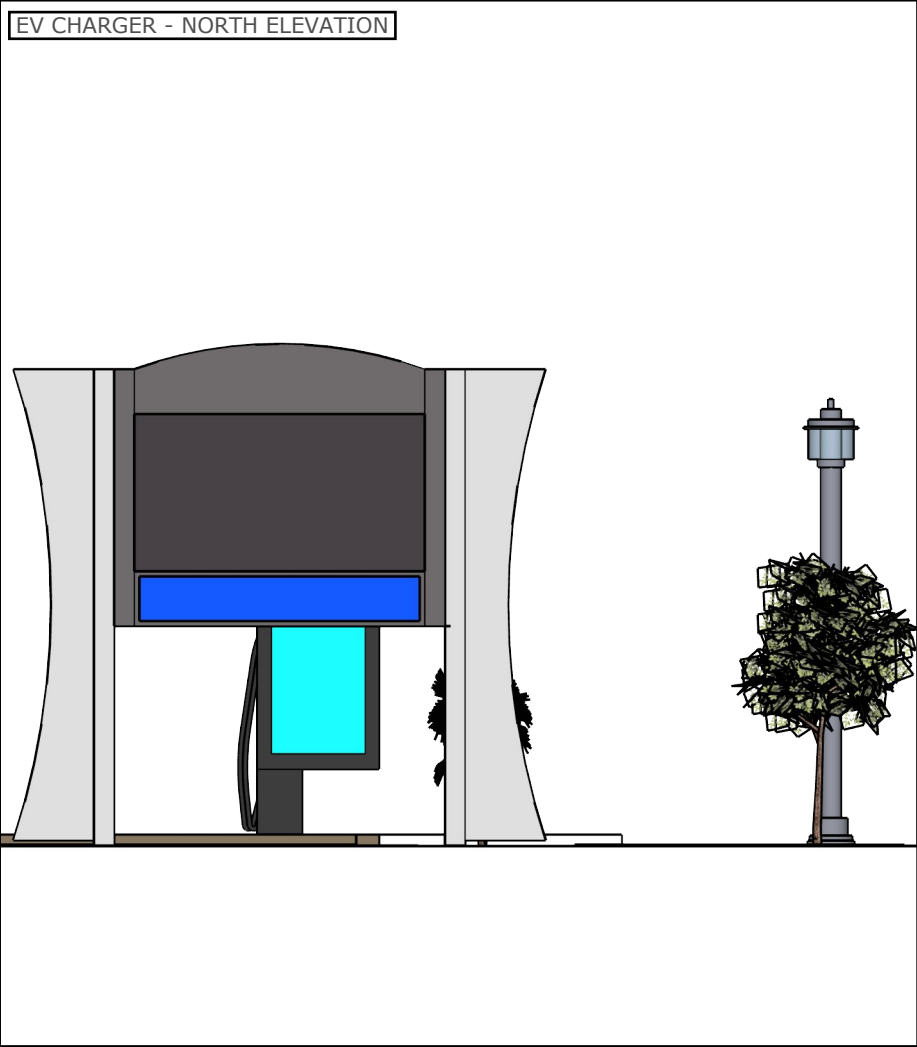
THE PROPERTY OF JOLT CHARGE AND SHALL NOT BE COPIED IN PART OF WHOLE WITHOUT AUTHORISATION

04.05.25 J. STEELE

JOLT CHARGE PTY LTD

1 SUSSEX ST SYDNEY 2000, SYDNEY NSW 2000

CITY OF DELTA, BC			
SHEET: EV CHARGER - SURROUNDING FEATURES			
DATE	SCALE	SITE NUMBER	REVISION
04.05.25	1:200	NA	A



56 STREET

<b>MAIN STREET:</b>	56 STREET
<b>CROSS STREET:</b>	12 AVENUE
<b>OUTSIDE/OPP:</b>	1299A 56 Street
<b>MUNICIPALITY</b>	DELTA, BC
<b>KNOWN AS:</b>	TSWAAWWASSEN SHOPPING CENTRE (REV. A)

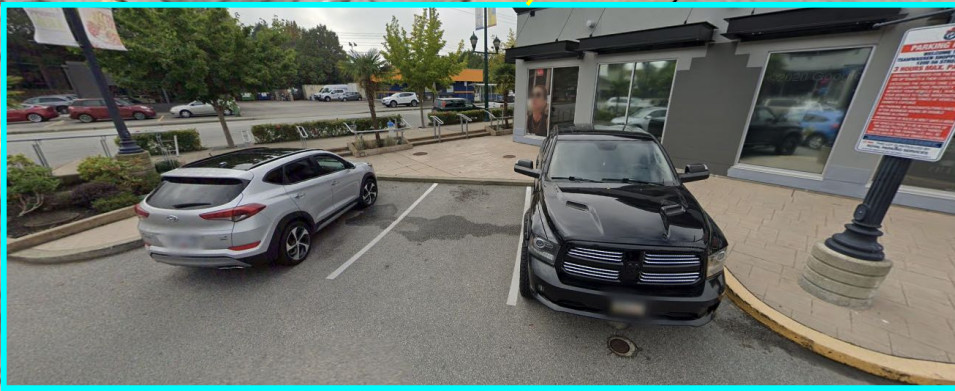
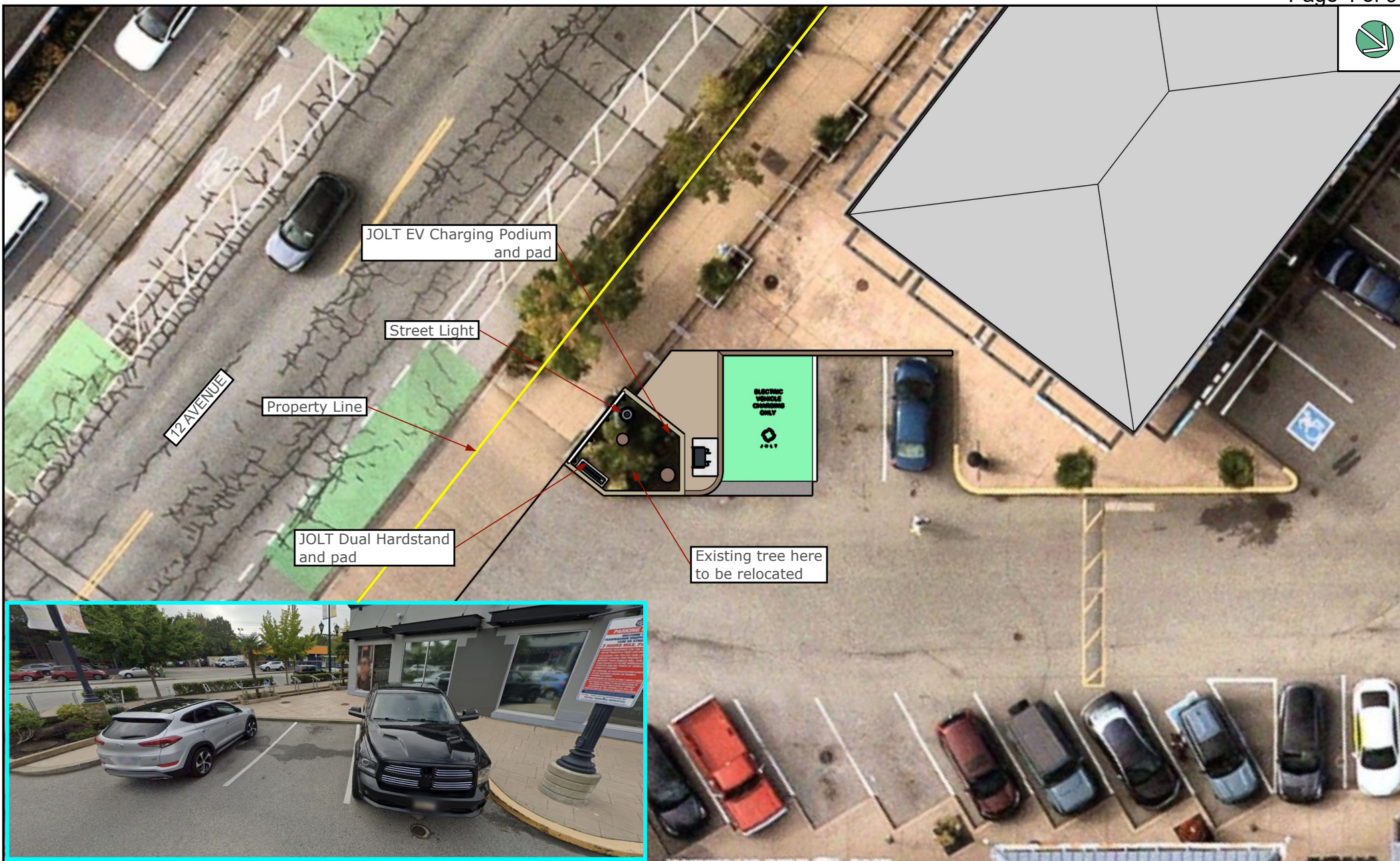


ISSUE	DESCRIPTION	DATE	DRAWN
A	DA DRAWING	04.05.25	J. STEELE

**THIS DRAWING IS THE PROPERTY OF JOLT CHARGE AND SHALL NOT BE COPIED IN PART OF WHOLE WITHOUT AUTHORISATION**

JOLT CHARGE PTY LTD  
1 SUSSEX ST SYDNEY 2000, SYDNEY NSW 2000

<b>CITY OF DELTA, BC</b>			
SHEET: EV CHARGER - ELEVATIONS			
DATE	SCALE	SITE NUMBER	REVISION
04.05.25	1:200	NA	A



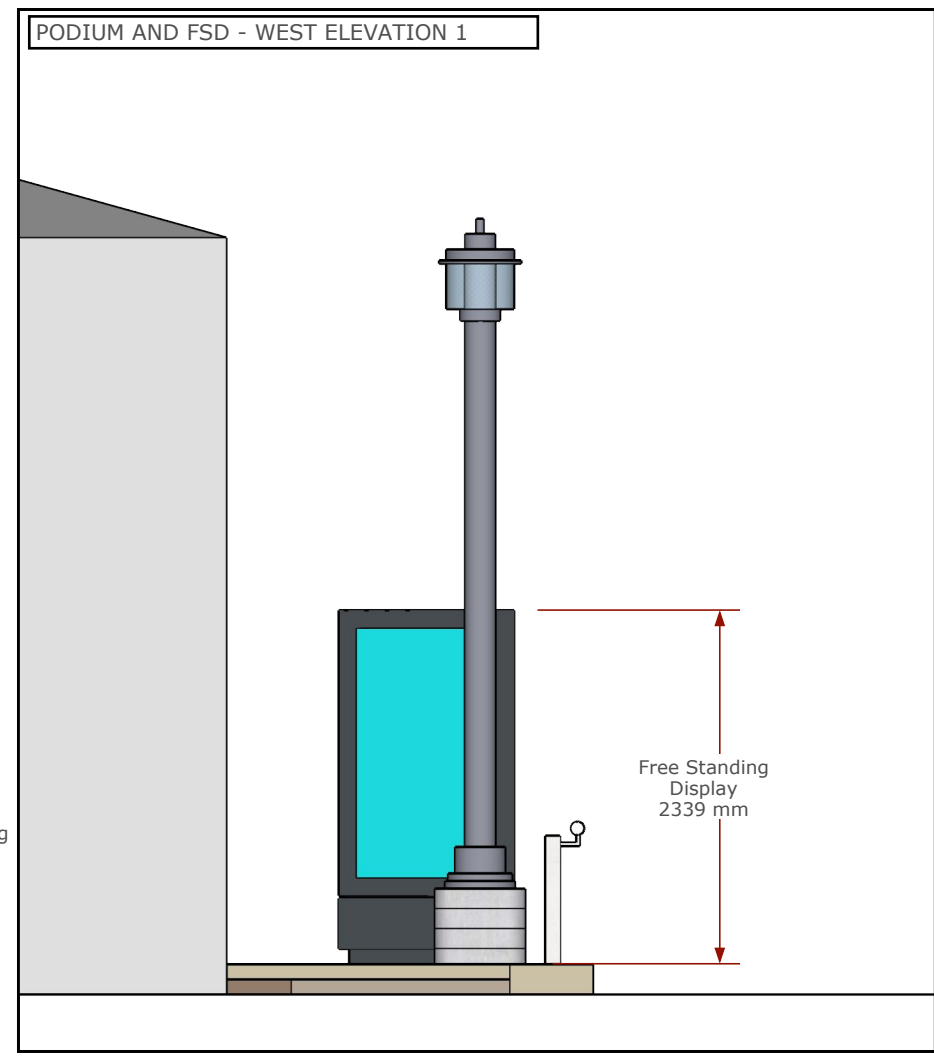
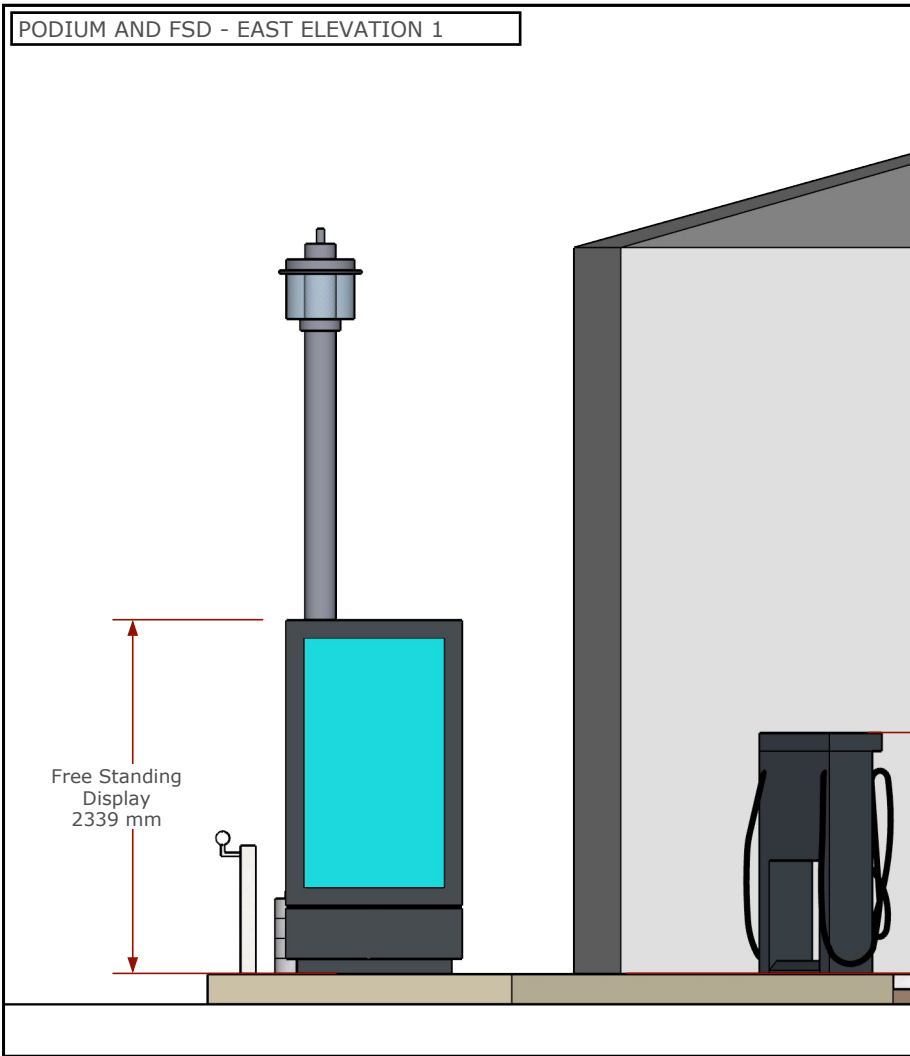
<b>MAIN STREET:</b>	56 STREET
<b>CROSS STREET:</b>	12 AVENUE
<b>OUTSIDE/OPP:</b>	1299A 56 Street
<b>MUNICIPALITY</b>	DELTA, BC
<b>KNOWN AS:</b>	TSWAAWWASSEN SHOPPING CENTRE (REV A)



ISSUE	DESCRIPTION	DATE	DRAWN
A	DA DRAWING	04.05.25	J. STEELE

<b>THIS DRAWING IS THE PROPERTY OF JOLT CHARGE AND SHALL NOT BE COPIED IN PART OF WHOLE WITHOUT AUTHORISATION</b>	
JOLT CHARGE PTY LTD	
1 SUSSEX ST SYDNEY 2000, SYDNEY NSW 2000	

<b>CITY OF DELTA, BC</b>			
SHEET: PODIUM & FSD - SURROUNDING FEATURES			
Free Standing Display Location - EAST - SURROUNDING FEATURES	DATE	SCALE	SITE NUMBER
	04.05.25	1:200	NA
			REVISION
			A



<b>MAIN STREET:</b>	56 STREET
<b>CROSS STREET:</b>	12 AVENUE
<b>OUTSIDE/OPP:</b>	1299A 56 Street
<b>MUNICIPALITY:</b>	DELTA, BC
<b>KNOWN AS:</b>	TSWAAWWASSEN SHOPPING CENTRE (REV. A)



ISSUE	DESCRIPTION	DATE	DRAWN
A	DA DRAWING	04.05.25	J. STEELE

**THIS DRAWING IS THE PROPERTY OF JOLT CHARGE AND SHALL NOT BE COPIED IN PART OF WHOLE WITHOUT AUTHORISATION**

JOLT CHARGE PTY LTD  
1 SUSSEX ST SYDNEY 2000, SYDNEY NSW 2000

<b>CITY OF DELTA, BC</b>			
SHEET: PODIUM & FSD - ELEVATIONS			
DATE	SCALE	SITE NUMBER	REVISION
04.05.25	1:50	NA	A



# JOLT Products – EVA 3.0



\*Not to scale

© 2022 JOLT CHARGE • CONFIDENTIAL

<b>MAIN STREET:</b>	56 STREET
<b>CROSS STREET:</b>	12 AVENUE
<b>OUTSIDE/OPP:</b>	1299A 56 Street
<b>MUNICIPALITY</b>	DELTA, BC
<b>KNOWN AS:</b>	TSWAAWWASSEN SHOPPING CENTRE (REV. A)



ISSUE	DESCRIPTION	DATE	DRAWN
A	DA DRAWING	04.05.25	J. STEELE

<b>THIS DRAWING IS THE PROPERTY OF JOLT CHARGE AND SHALL NOT BE COPIED IN PART OF WHOLE WITHOUT AUTHORISATION</b>	JOLT CHARGE PTY LTD
	1 SUSSEX ST SYDNEY 2000, SYDNEY NSW 2000

<b>CITY OF DELTA, BC</b>			
SHEET: JOLT EVA 3.0 EV CHARGER SPECIFICATIONS (Place holder)			
DATE	SCALE	SITE NUMBER	REVISION
04.05.25	NA	NA	A



## JOLT Products – EV Charger Podium (Split)

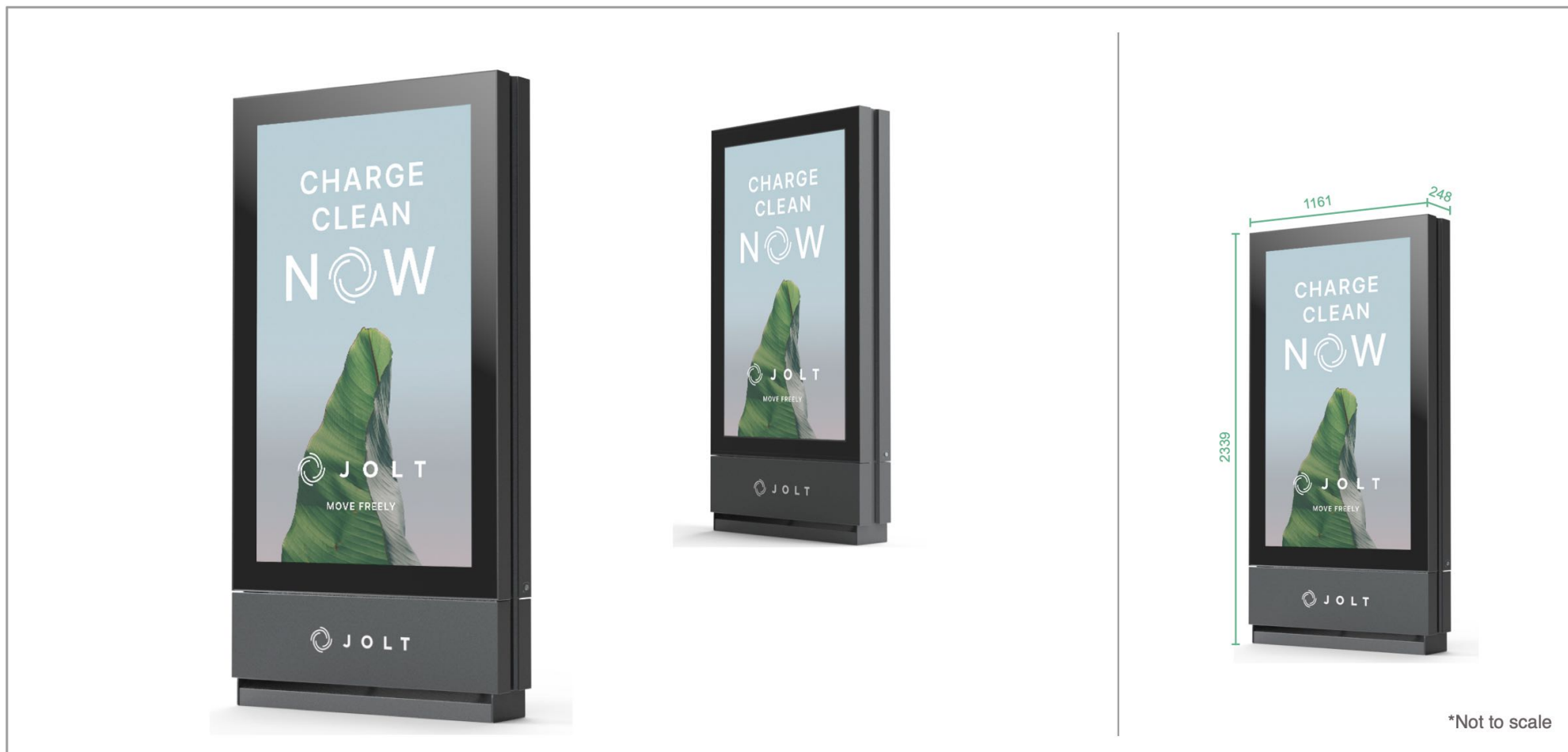


© 2022 JOLT CHARGE • CONFIDENTIAL


<b>MAIN STREET:</b>	56 STREET		<b>ISSUE</b>	<b>DESCRIPTION</b>	<b>DATE</b>	<b>DRAWN</b>	<b>THIS DRAWING IS THE PROPERTY OF JOLT CHARGE AND SHALL NOT BE COPIED IN PART OF WHOLE WITHOUT AUTHORISATION</b>  JOLT CHARGE PTY LTD 1 SUSSEX ST SYDNEY 2000, SYDNEY NSW 2000	<b>CITY OF DELTA, BC</b>			
<b>CROSS STREET:</b>	12 AVENUE		A	DA DRAWING	04.05.25	J. STEELE		SHEET: JOLT EV CHARGER PODIUM (SPLIT) SPECIFICATIONS			
<b>OUTSIDE/OPP:</b>	1299A 56 Street							<b>DATE</b>	<b>SCALE</b>	<b>SITE NUMBER</b>	<b>REVISION</b>
<b>MUNICIPALITY</b>	DELTA, BC							04.05.25	NA	NA	A
<b>KNOWN AS:</b>	TSWAAWWASSEN SHOPPING CENTRE (REV. A)										



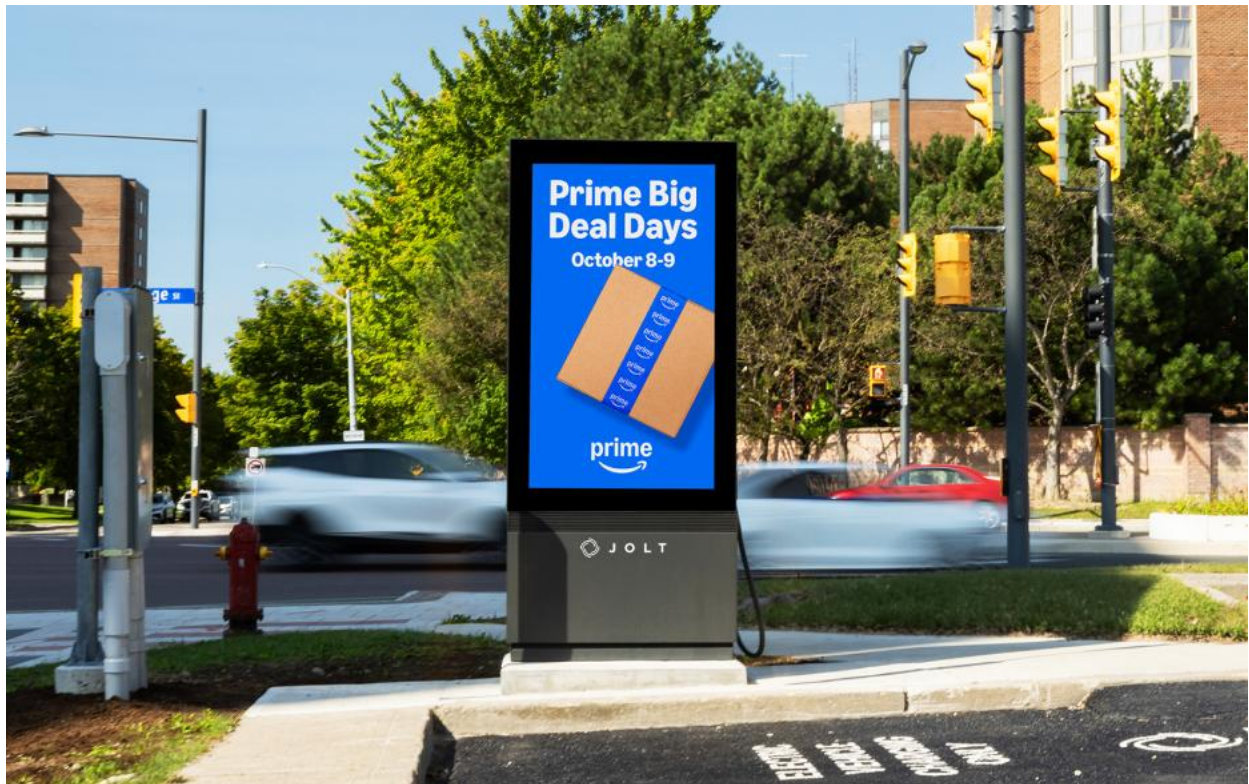
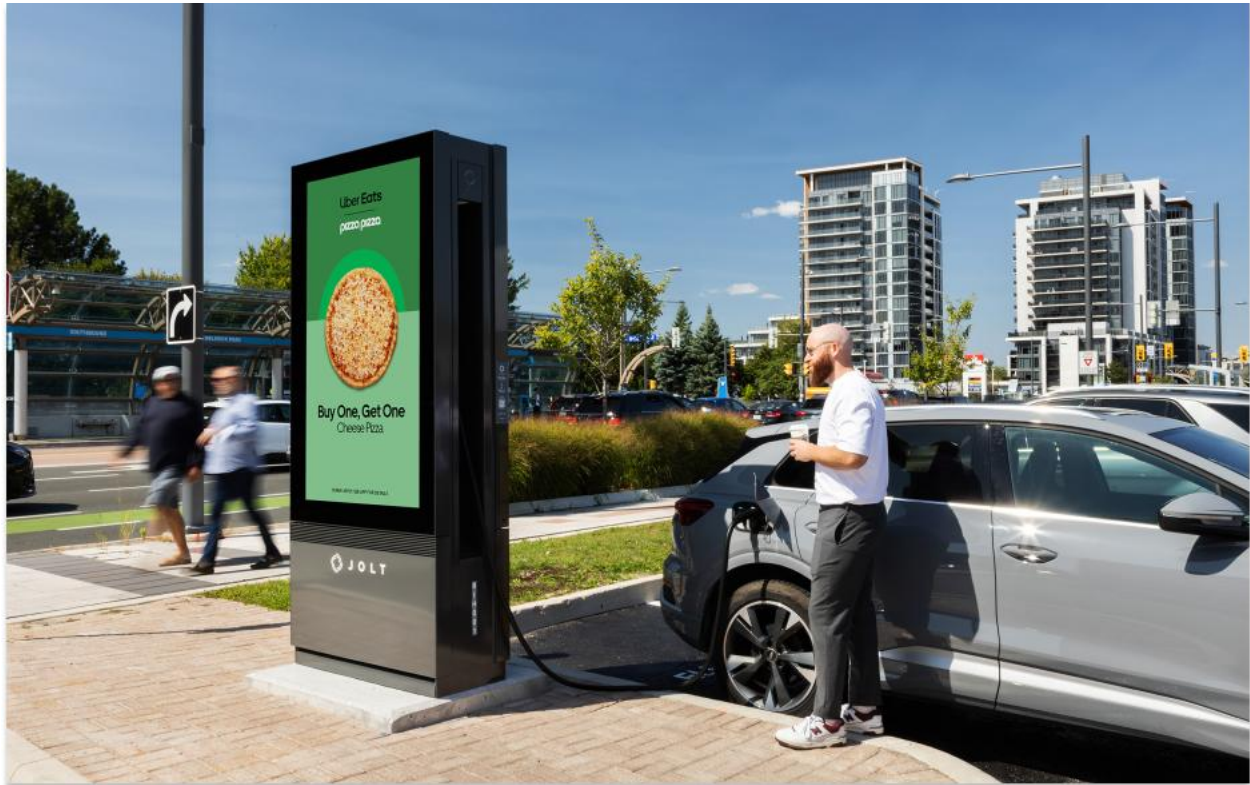
## JOLT Products – Dual Free-Standing Display (FSD)



© 2022 JOLT CHARGE • CONFIDENTIAL

<b>MAIN STREET:</b>	56 STREET		<b>ISSUE</b>	<b>DESCRIPTION</b>	<b>DATE</b>	<b>DRAWN</b>	<b>THIS DRAWING IS THE PROPERTY OF JOLT CHARGE AND SHALL NOT BE COPIED IN PART OF WHOLE WITHOUT AUTHORISATION</b>  JOLT CHARGE PTY LTD 1 SUSSEX ST SYDNEY 2000, SYDNEY NSW 2000	<b>CITY OF DELTA, BC</b>			
<b>CROSS STREET:</b>	12 AVENUE		A	DA DRAWING	04.05.25	J. STEELE		SHEET: JOLT DUAL FSD SPECIFICATIONS			
<b>OUTSIDE/OPP:</b>	1299A 56 Street							<b>DATE</b>	<b>SCALE</b>	<b>SITE NUMBER</b>	<b>REVISION</b>
<b>MUNICIPALITY</b>	DELTA, BC							04.05.25	NA	NA	A
<b>KNOWN AS:</b>	TSWAAWWASSEN SHOPPING CENTRE (REV. A)										

Examples of freestanding signs with built-in EV chargers



Source: <https://joltcharge.com/ca/advertising/>