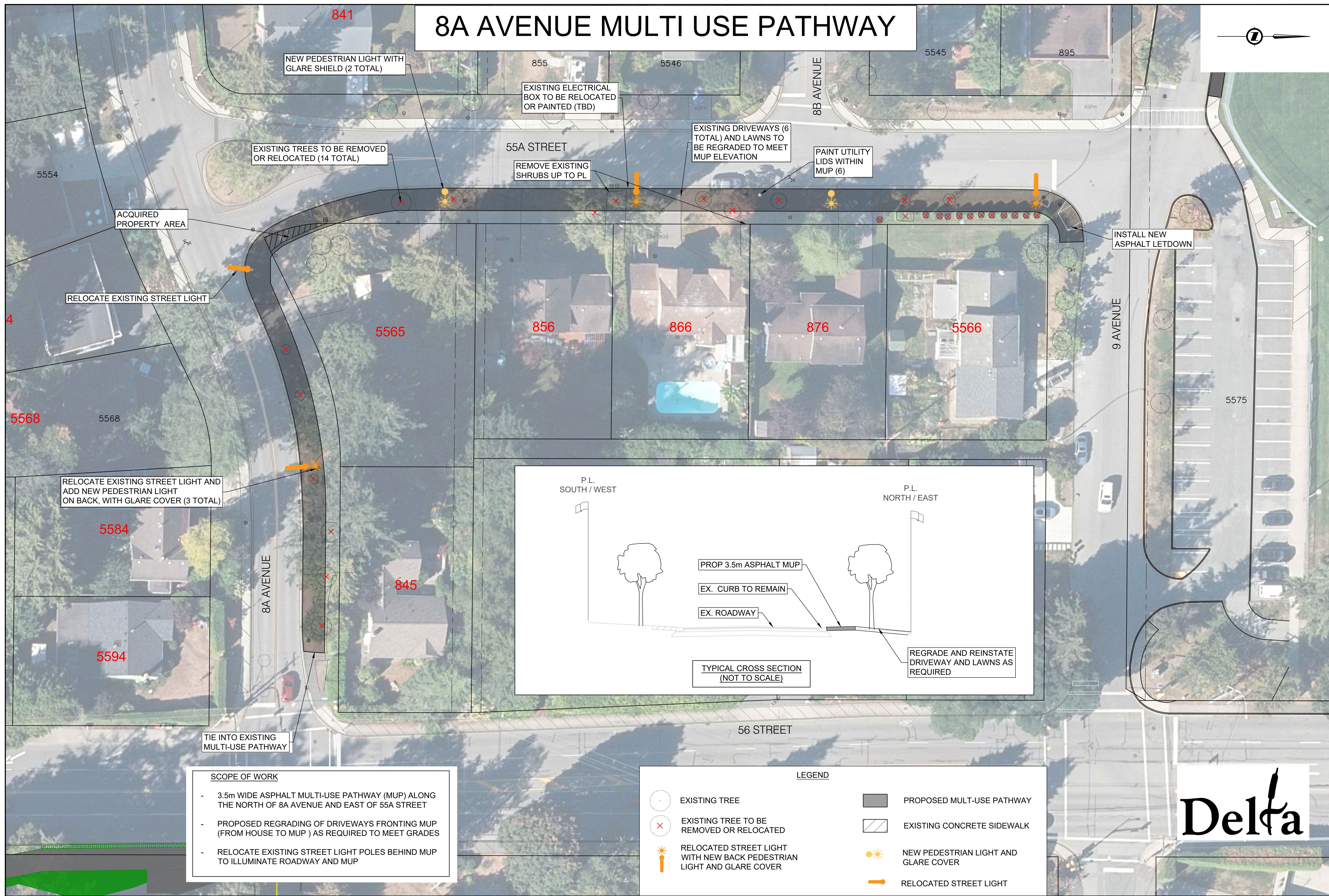
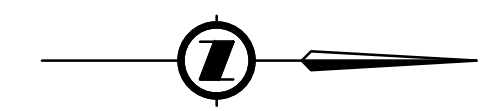


8A AVENUE MULTI USE PATHWAY



NEW PEDESTRIAN LIGHT WITH GLARE SHIELD (2 TOTAL)

EXISTING ELECTRICAL BOX TO BE RELOCATED OR PAINTED (TBD)

EXISTING DRIVEWAYS (6 TOTAL) AND LAWNS TO BE REGRADED TO MEET MUP ELEVATION

EXISTING TREES TO BE REMOVED OR RELOCATED (14 TOTAL)

REMOVE EXISTING SHRUBS UP TO PL

PAINT UTILITY LIDS WITHIN MUP (6)

ACQUIRED PROPERTY AREA

INSTALL NEW ASPHALT LETDOWN

RELOCATE EXISTING STREET LIGHT

RELOCATE EXISTING STREET LIGHT AND ADD NEW PEDESTRIAN LIGHT ON BACK, WITH GLARE COVER (3 TOTAL)

P.L. SOUTH / WEST

P.L. NORTH / EAST

PROP 3.5m ASPHALT MUP

EX. CURB TO REMAIN

EX. ROADWAY

REGRADE AND REINSTATE DRIVEWAY AND LAWNS AS REQUIRED

TYPICAL CROSS SECTION (NOT TO SCALE)

SCOPE OF WORK

- 3.5m WIDE ASPHALT MULTI-USE PATHWAY (MUP) ALONG THE NORTH OF 8A AVENUE AND EAST OF 55A STREET
- PROPOSED REGRADING OF DRIVEWAYS FRONTING MUP (FROM HOUSE TO MUP) AS REQUIRED TO MEET GRADES
- RELOCATE EXISTING STREET LIGHT POLES BEHIND MUP TO ILLUMINATE ROADWAY AND MUP

LEGEND

- EXISTING TREE
- ⊗ EXISTING TREE TO BE REMOVED OR RELOCATED
- ☀ RELOCATED STREET LIGHT WITH NEW BACK PEDESTRIAN LIGHT AND GLARE COVER
- PROPOSED MULTI-USE PATHWAY
- ▨ EXISTING CONCRETE SIDEWALK
- ☀ NEW PEDESTRIAN LIGHT AND GLARE COVER
- ➔ RELOCATED STREET LIGHT

