



**ENGINEERING & FACILITIES AND MAJOR PROJECTS
POLICIES AND PROCEDURES**

Effective Date: *November 18, 2024*

SUBJECT **SNOW & ICE CONTROL POLICY**

INTENT To attempt to reduce the hazardous conditions which occur during the fall and winter on Delta roads and civic facilities as a result of ice and snow conditions.

POLICY During regular working hours, Monday-Friday, Engineering Operations staff monitors road conditions for hazardous conditions arising from snow or ice. After regular working hours, calls received from the public and Delta Police are monitored and reported through E-COMM, and forwarded to Engineering After Hours or Standby personnel. Once it has been identified that hazardous conditions may be developing, appropriate Operations staff inspect conditions and arrange for response in accordance with the priorities outlined below.

Where there is a reasonable certainty that a snowfall is going to occur outside of regular working hours (based on the daily weather forecast from the City of Delta’s contracted service provider), a pre-scheduled staff person patrols roads to reduce resource callout and subsequent response times.

Pre-wetting (brining), salting, sanding, and snowplowing operations are carried out considering the following priorities noted below. Illustrated maps are attached which note the location of the work.

First Priority: Roads accessing emergency service locations, arterial roads and major transit routes. Pre-wetting, salting, sanding and snowplowing are carried out as conditions warrant.



**ENGINEERING & FACILITIES AND MAJOR PROJECTS
POLICIES AND PROCEDURES**

Second Priority: Industrial and commercial through roads, school access roads, remaining transit routes, select collector routes and entrances and accesses to civic facilities. Pre-wetting, salting, sanding and snowplowing are carried out as conditions warrant.

Third Priority: Remaining industrial, commercial and collector roads. Select hillside and agricultural roads. Pre-wetting, salting, sanding and snowplowing are carried out as conditions warrant.

Fourth Priority: Agricultural roads and hilly select residential areas. Work is carried out during normal working hours, unless otherwise approved by the City Manager.

Fifth Priority: Select residential areas and no through agricultural roads. Work is carried out during normal working hours, unless otherwise approved by the City Manager.

Sixth Priority: Remaining level grade residential. Work is carried out during normal working hours, unless otherwise approved by the City Manager.

First, second and third priority routes are maintained until the conditions are under control; only then are resources redirected onto lower priority routes. As soon as conditions deteriorate on any of the first three priority routes, resources are moved back to those priority routes.

For snow and ice management around municipal facilities, Facilities and Major Projects will be responsible for clearing snow and ice from civic facility entrances, sidewalks, walkways and frontages. These works are undertaken on an as needed basis as determined by facilities staff.

FINANCIAL

N/A

AUTHORITY

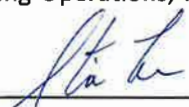
Approved by Council on November 18, 2024



**ENGINEERING & FACILITIES AND MAJOR PROJECTS
POLICIES AND PROCEDURES**

CONTACT Engineering Operations, Facilities and Major Projects

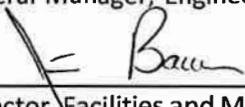
Approved



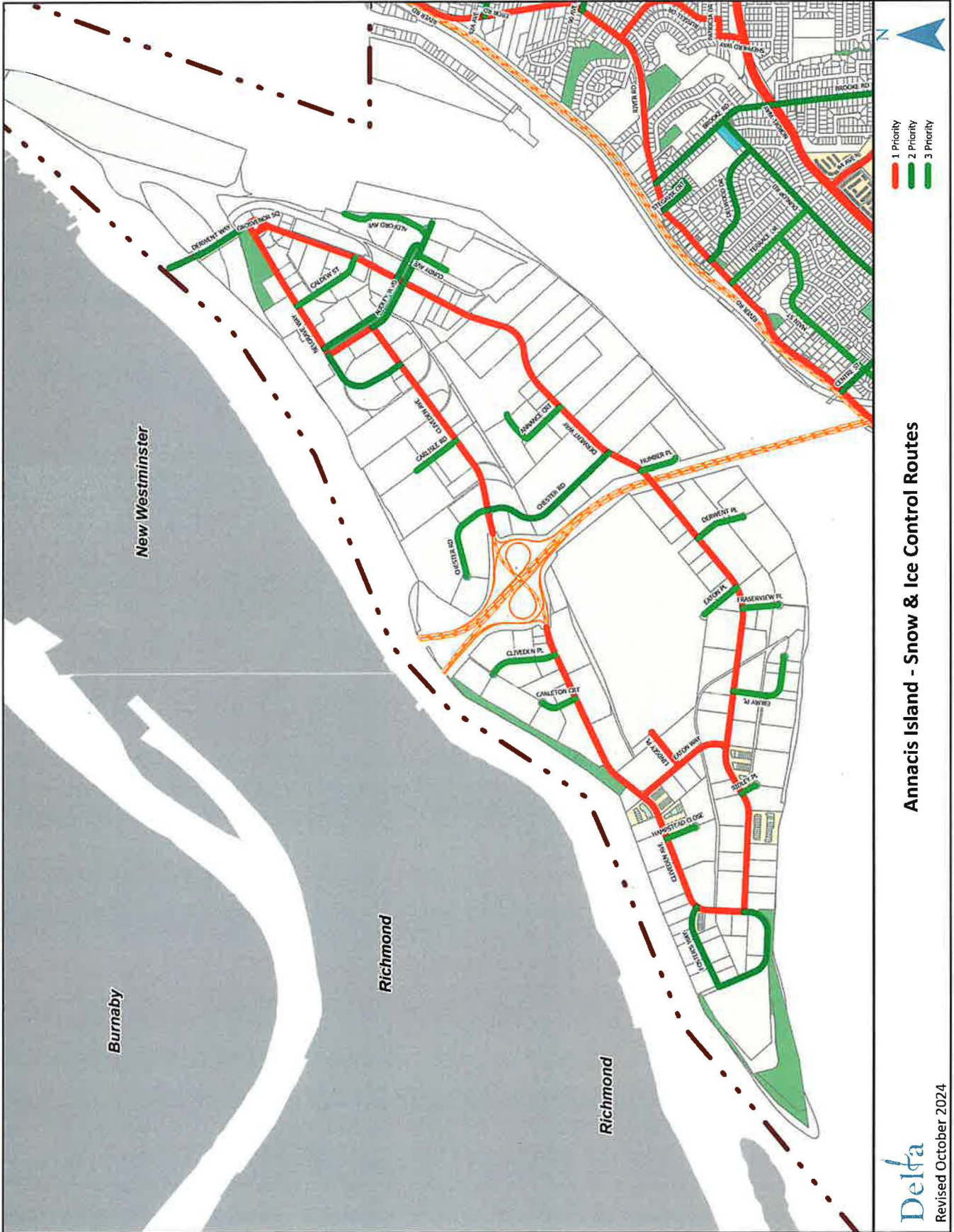
General Manager, Engineering



City Manager



Director, Facilities and Major
Projects

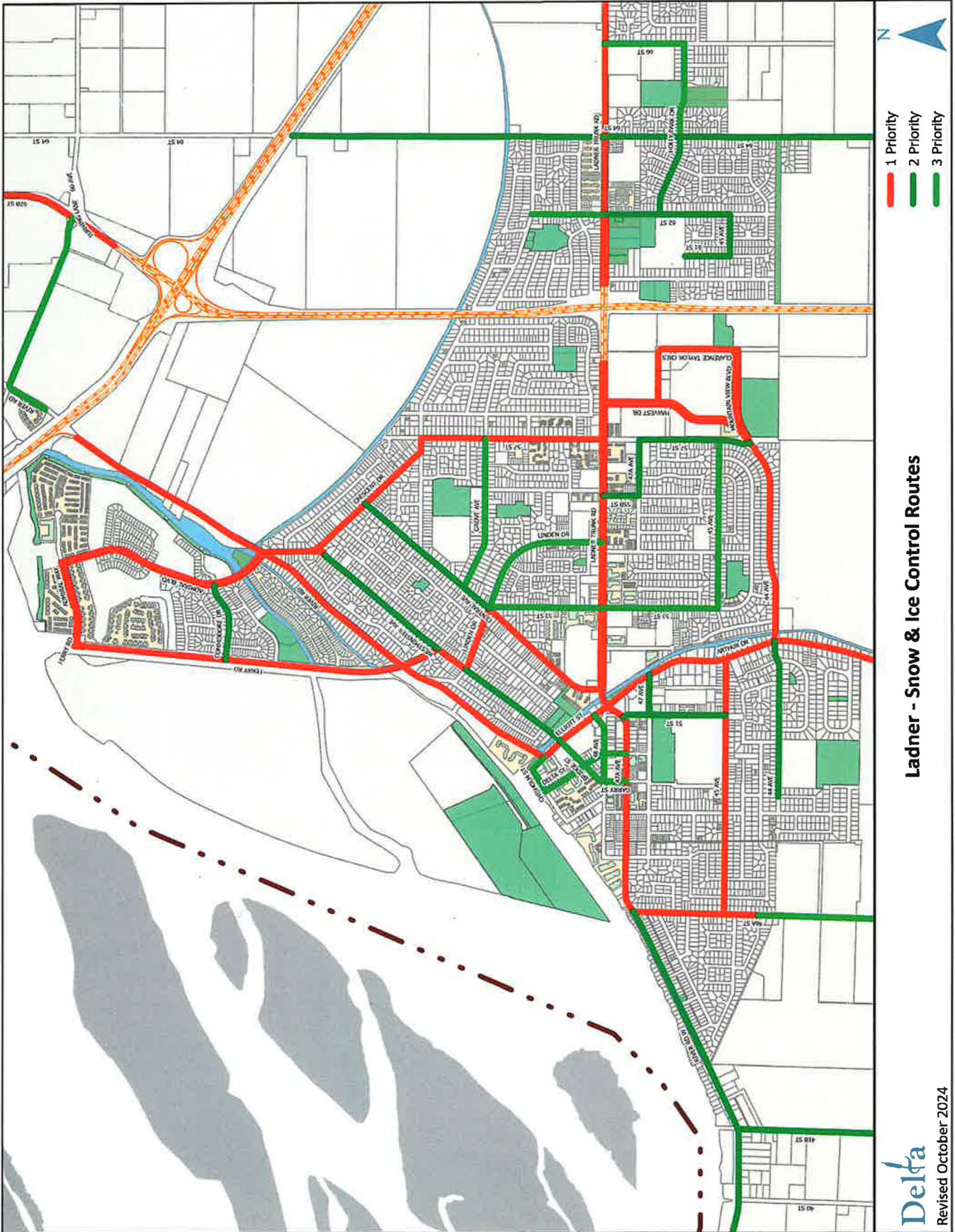


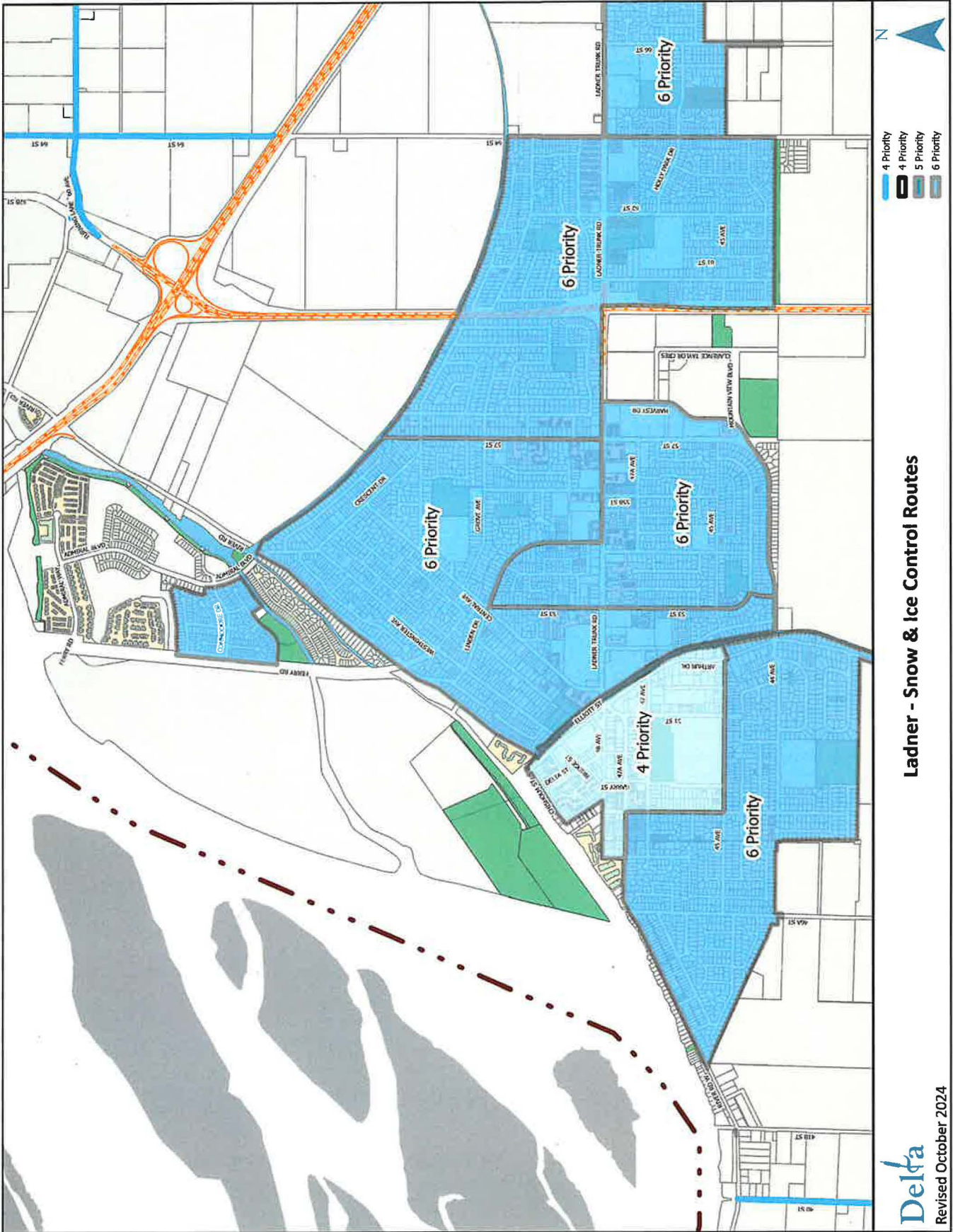
- 1 Priority
- 2 Priority
- 3 Priority

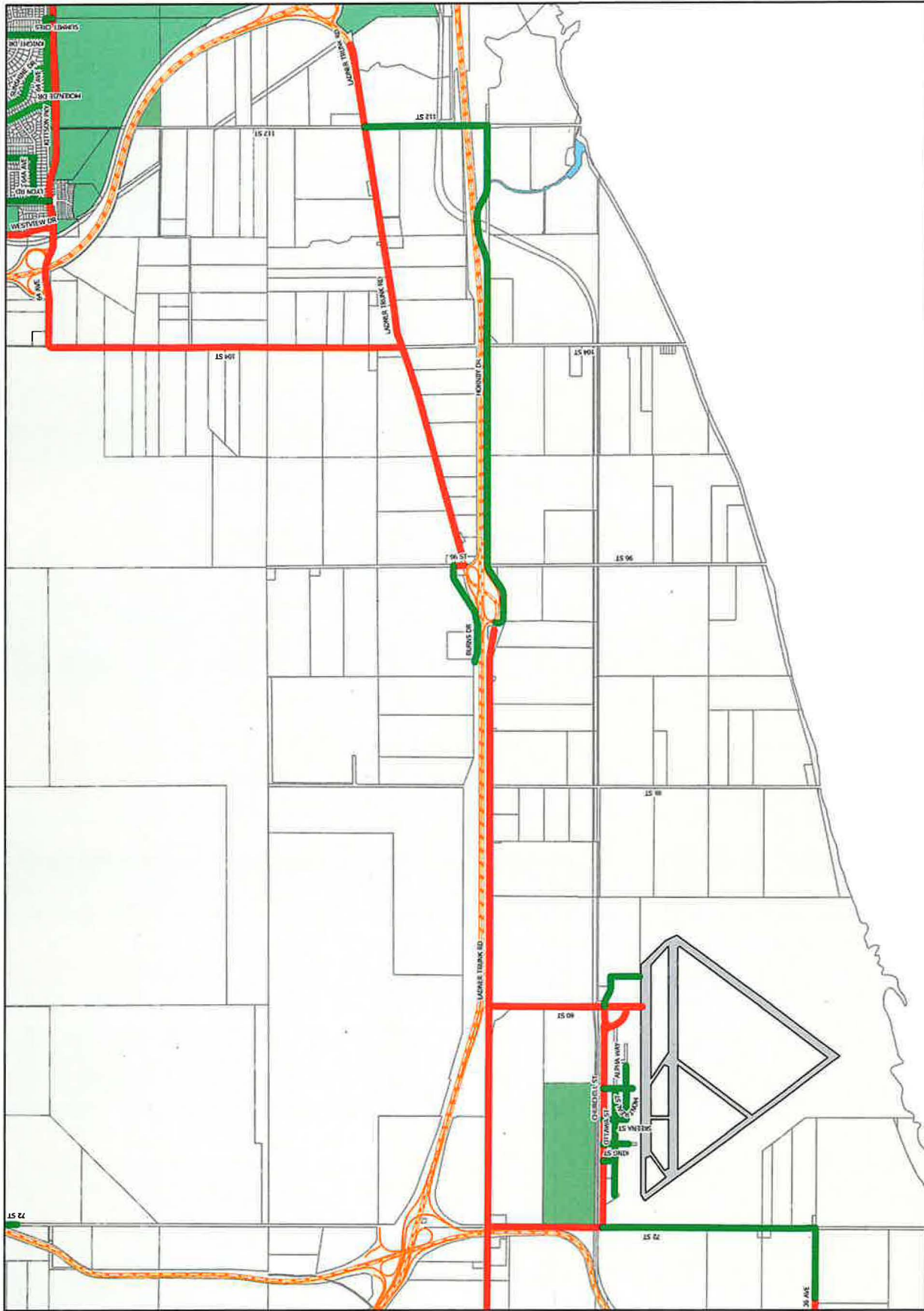
Annacis Island - Snow & Ice Control Routes

Delta

Revised October 2024



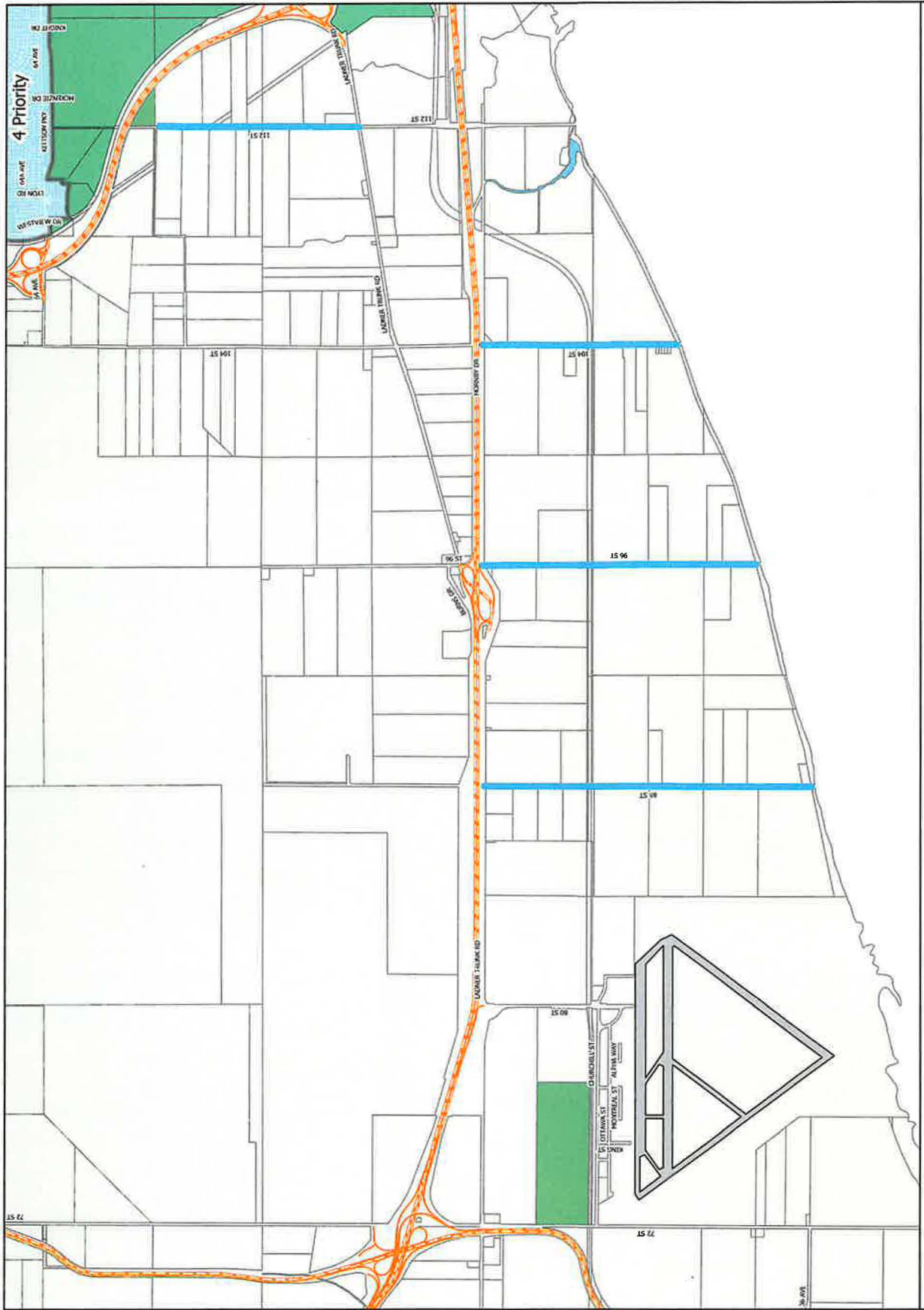




- 1 Priority
- 2 Priority
- 3 Priority

East Ladner - Snow & Ice Control Routes

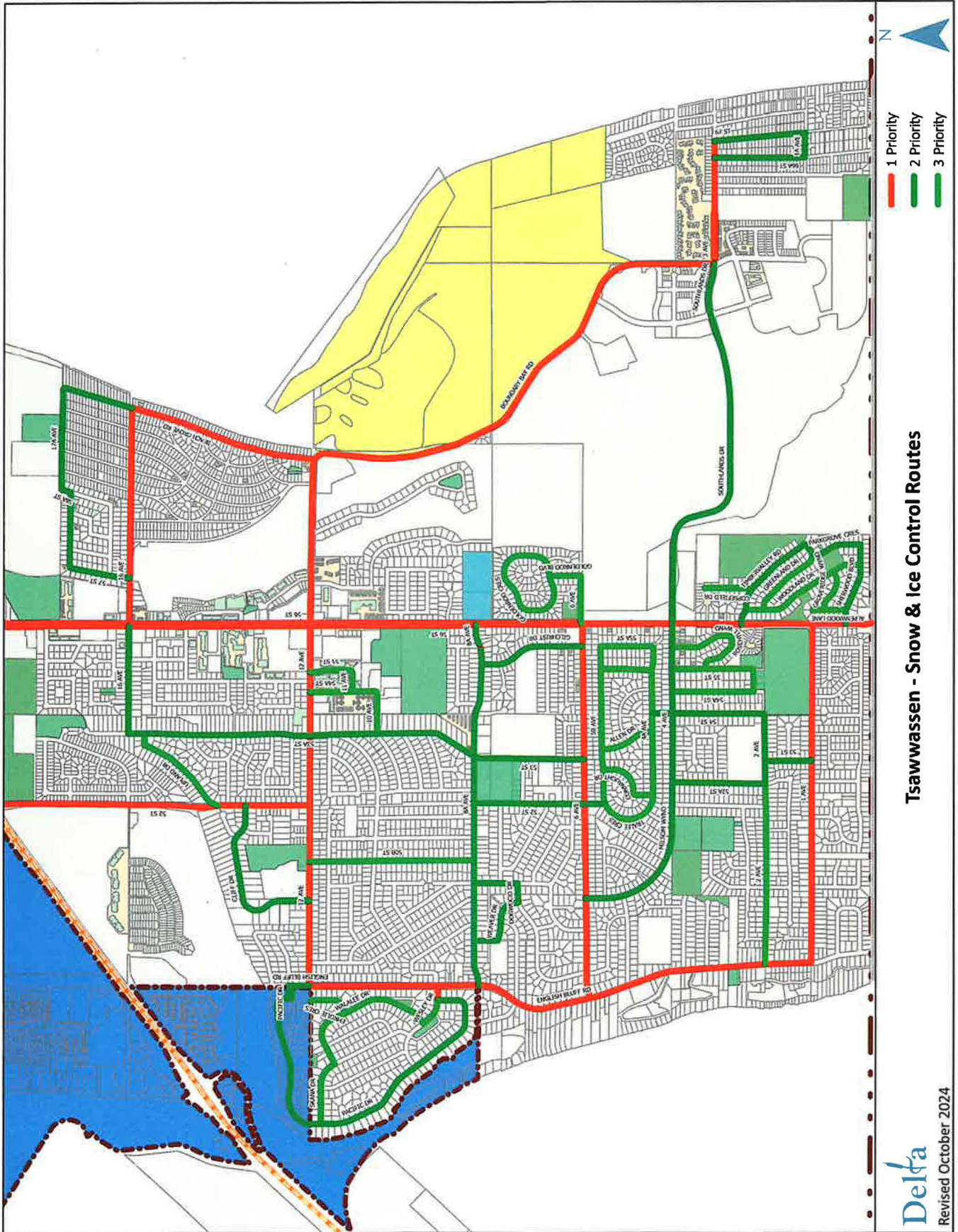
Delta
Revised October 2024



East Ladner - Snow & Ice Control Routes



Revised October 2024

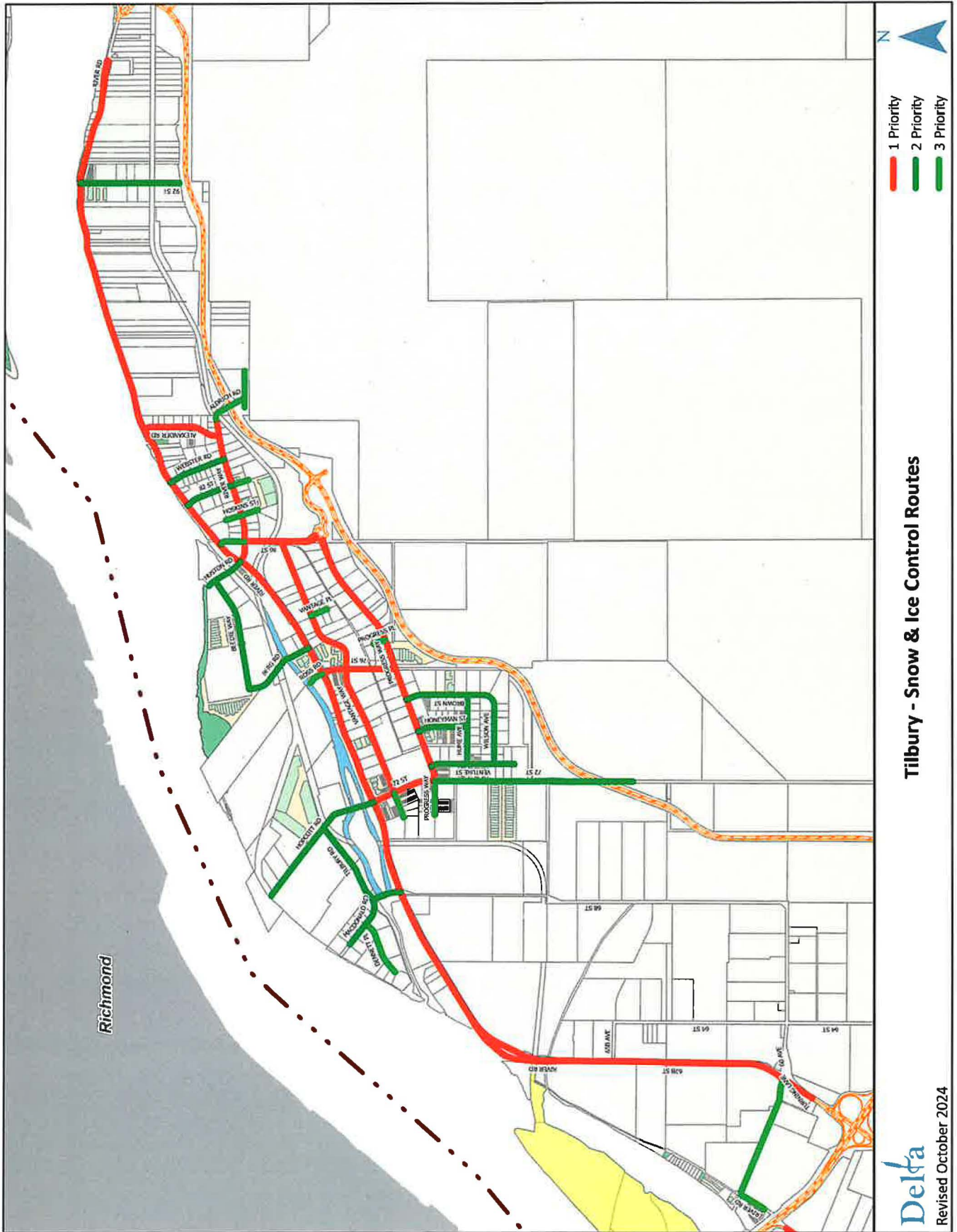


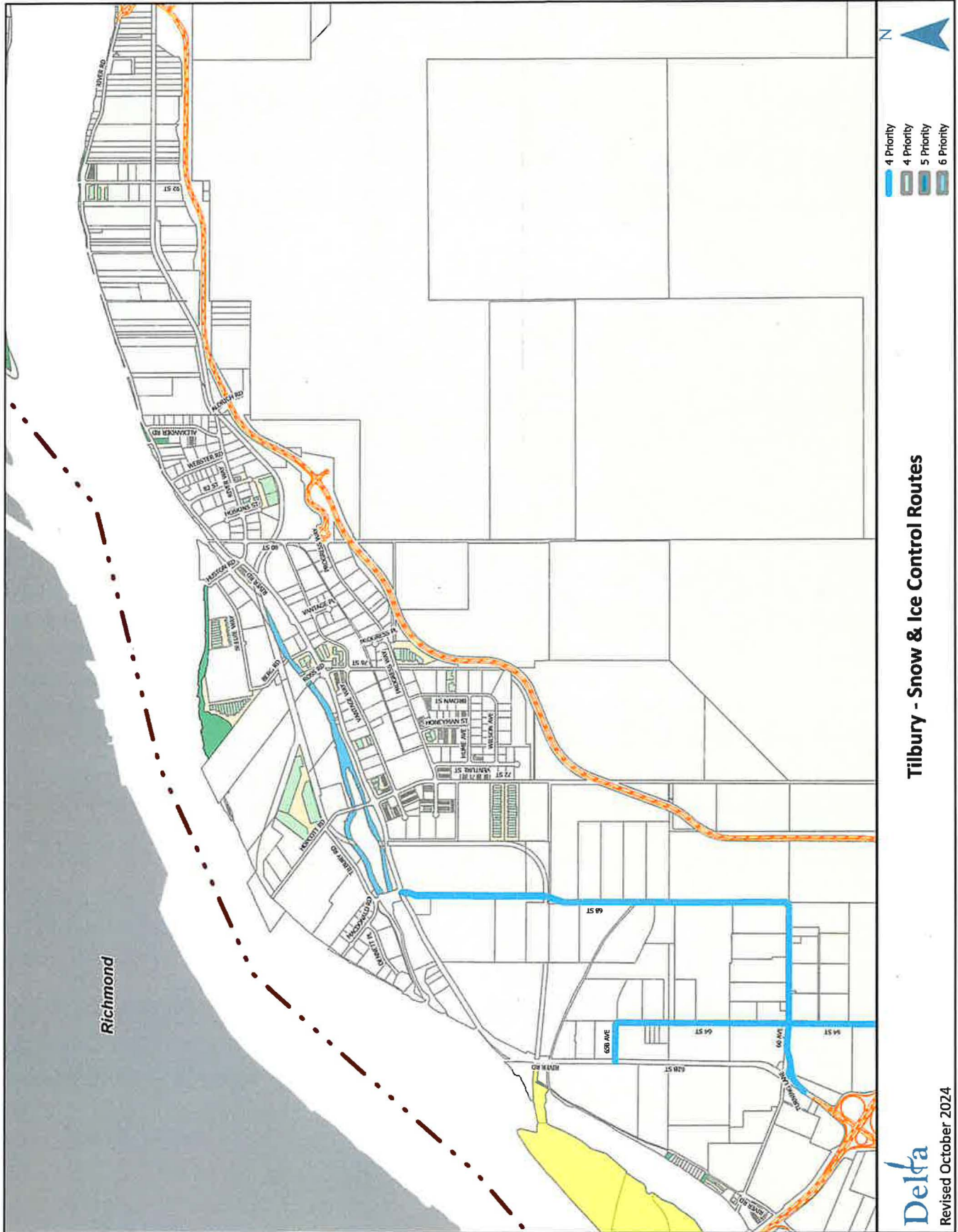
- 1 Priority
- 2 Priority
- 3 Priority

Tsawwassen - Snow & Ice Control Routes



Revised October 2024

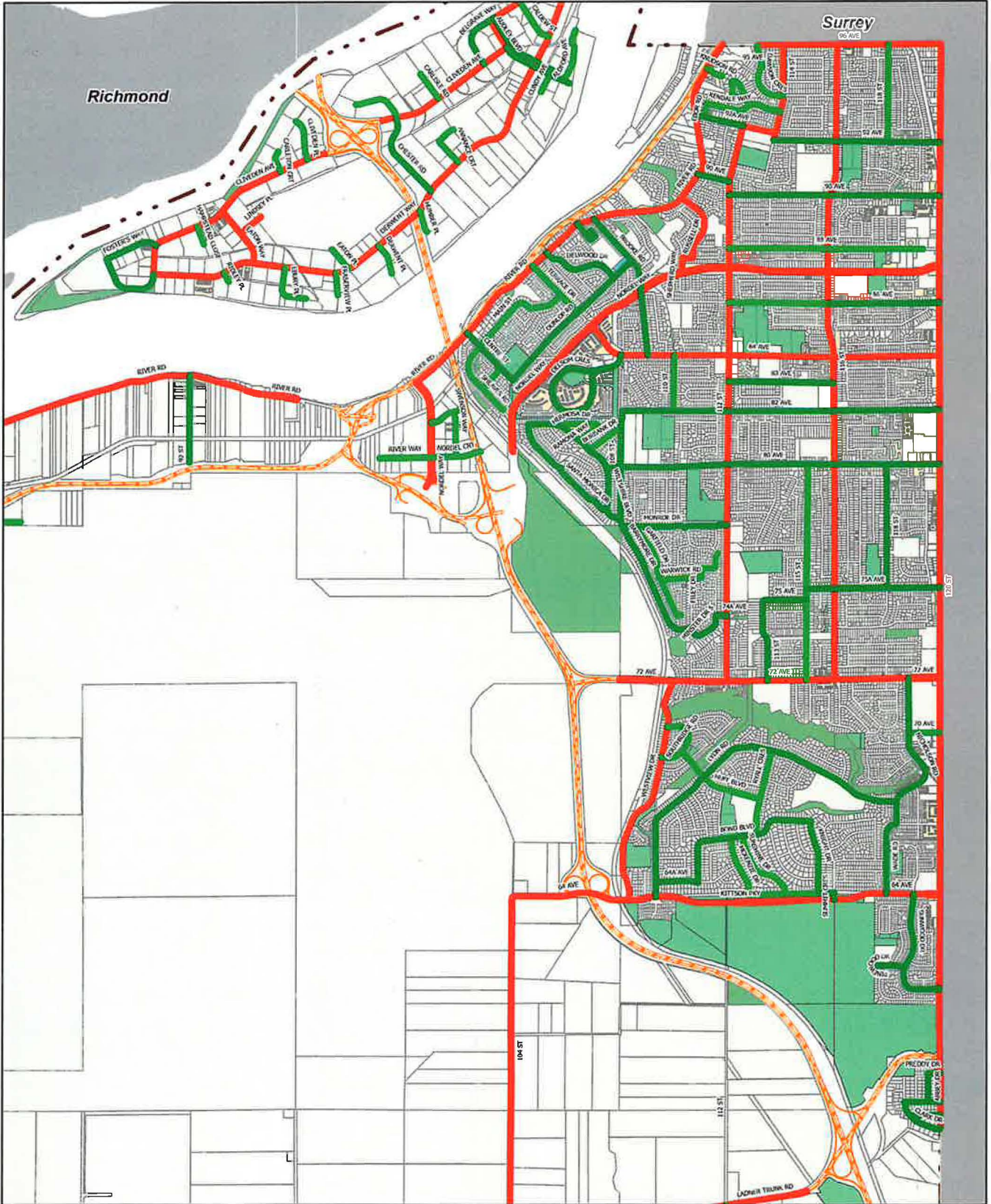




Tilbury - Snow & Ice Control Routes



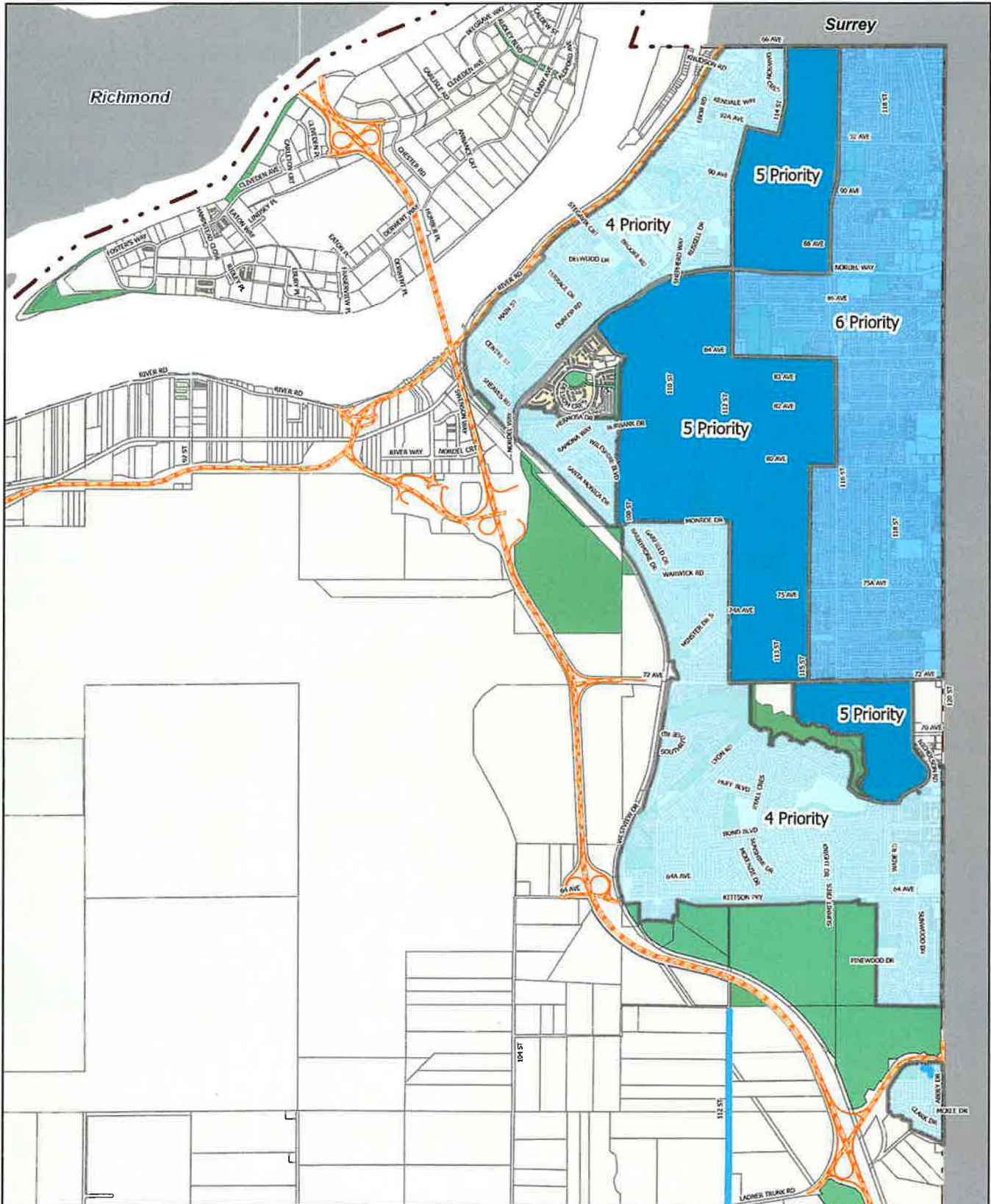
Revised October 2024



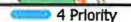
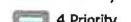

North Delta - Snow & Ice Control Routes

- 1 Priority
- 2 Priority
- 3 Priority





North Delta - Snow & Ice Control Routes

-  4 Priority
-  5 Priority
-  6 Priority



TILBURY FACILITIES

FACILITY	MAP
Tilbury Ice	Til-A1
Firehall #7	Til-A2
Delta Community Animal Shelter	Til-A3
Firehall #6	Til-A4

Date: November 2024






Legend:

- Facility Responsibility
- Priority #1 - Operations
- Snow Piles - Operations








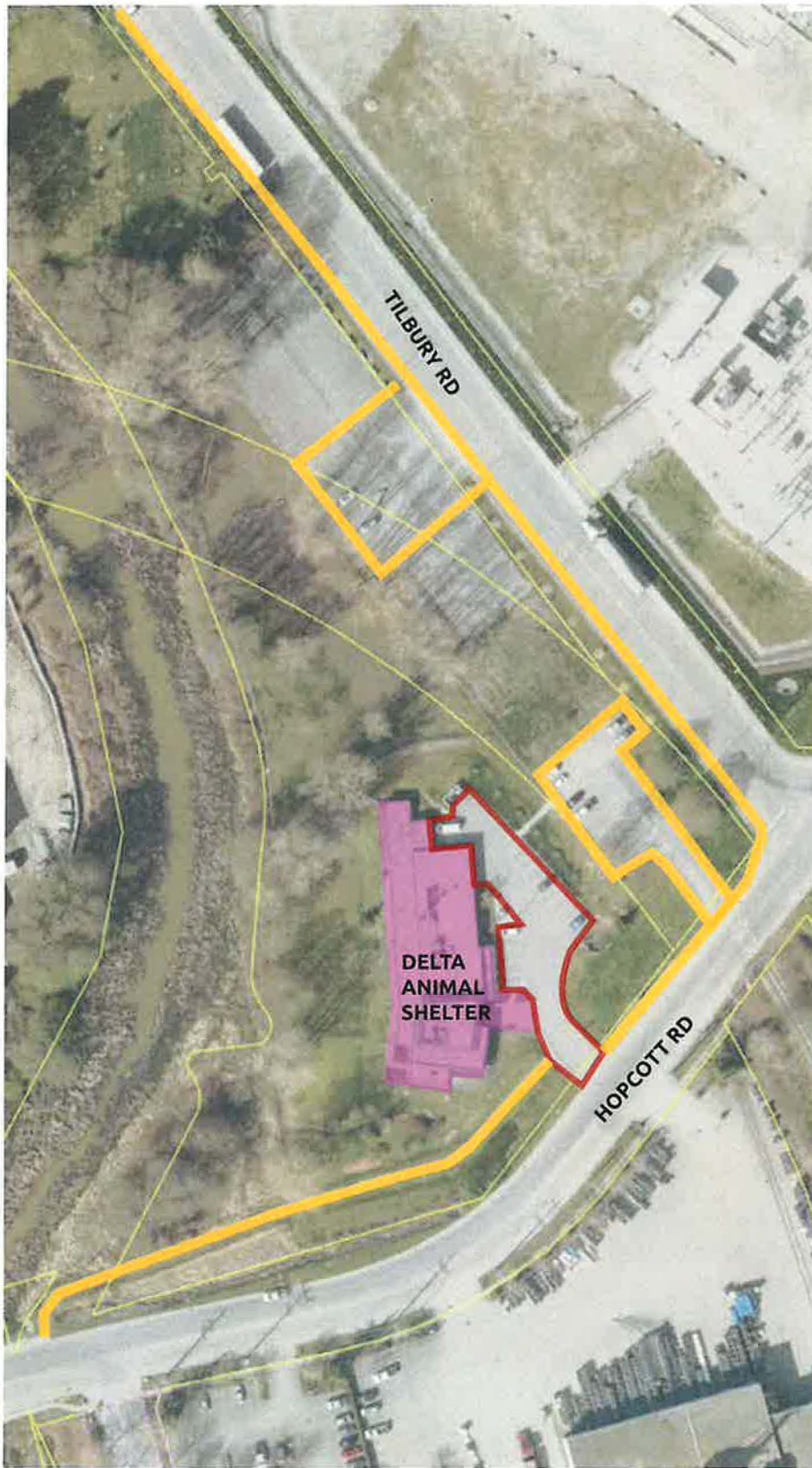
Legend:

-  Facility Responsibility
-  Priority #1 - Operations
-  Priority #2 - Operations



Legend:

-  Facility Responsibility
-  Priority #1 - Operations
-  Priority #3 - Operations





Legend:

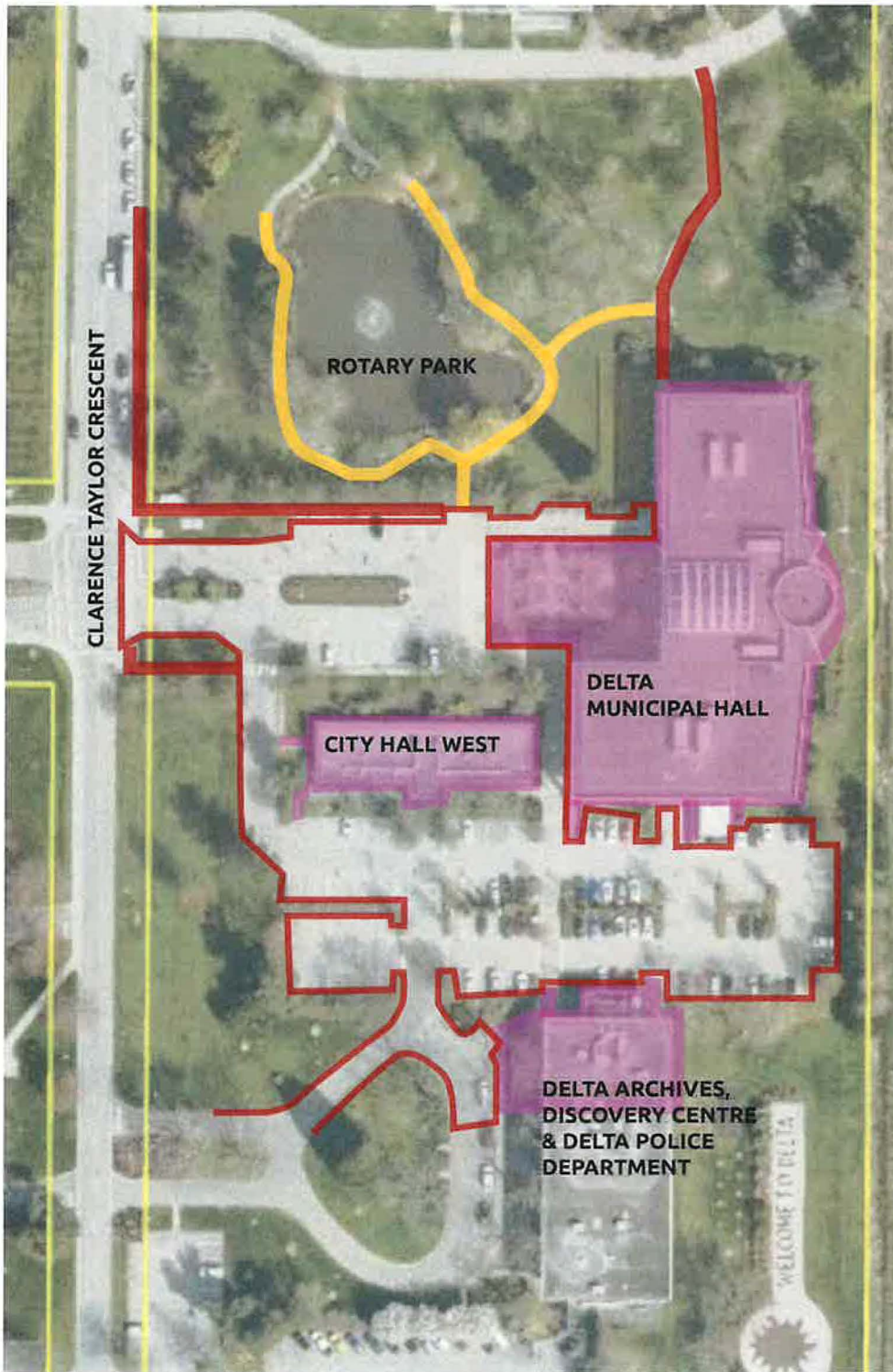
- Facility Responsibility
- Priority #1 - Operations
- Priority #2 - Operations



LADNER FACILITIES

FACILITY	MAP
Municipal Hall	L1
Delta Archives, Discovery Centre & DPD Annex	L2
Delta Police Headquarters	L3
Ladner Leisure Centre	L4
Saint Stephen's Church	L5
Paterson Park	L6
Firehall #1	L7
Ladner Community Centre & McKee Seniors Recreation Centre	L8
Evergreen Lane Parking Lot	L9
Reach Child Development Centre & Ladner Pioneer Library	L10
Magee Park	L11
Historic Municipal Hall	L12
4952-4958 Chisholm St	L13
Hawthorne Grove Park (Kirkland House & Harris Barn)	L14
Ladner Harbour Park	L15
Delta View	L16
Firehall #4	L17

Date: November 2024





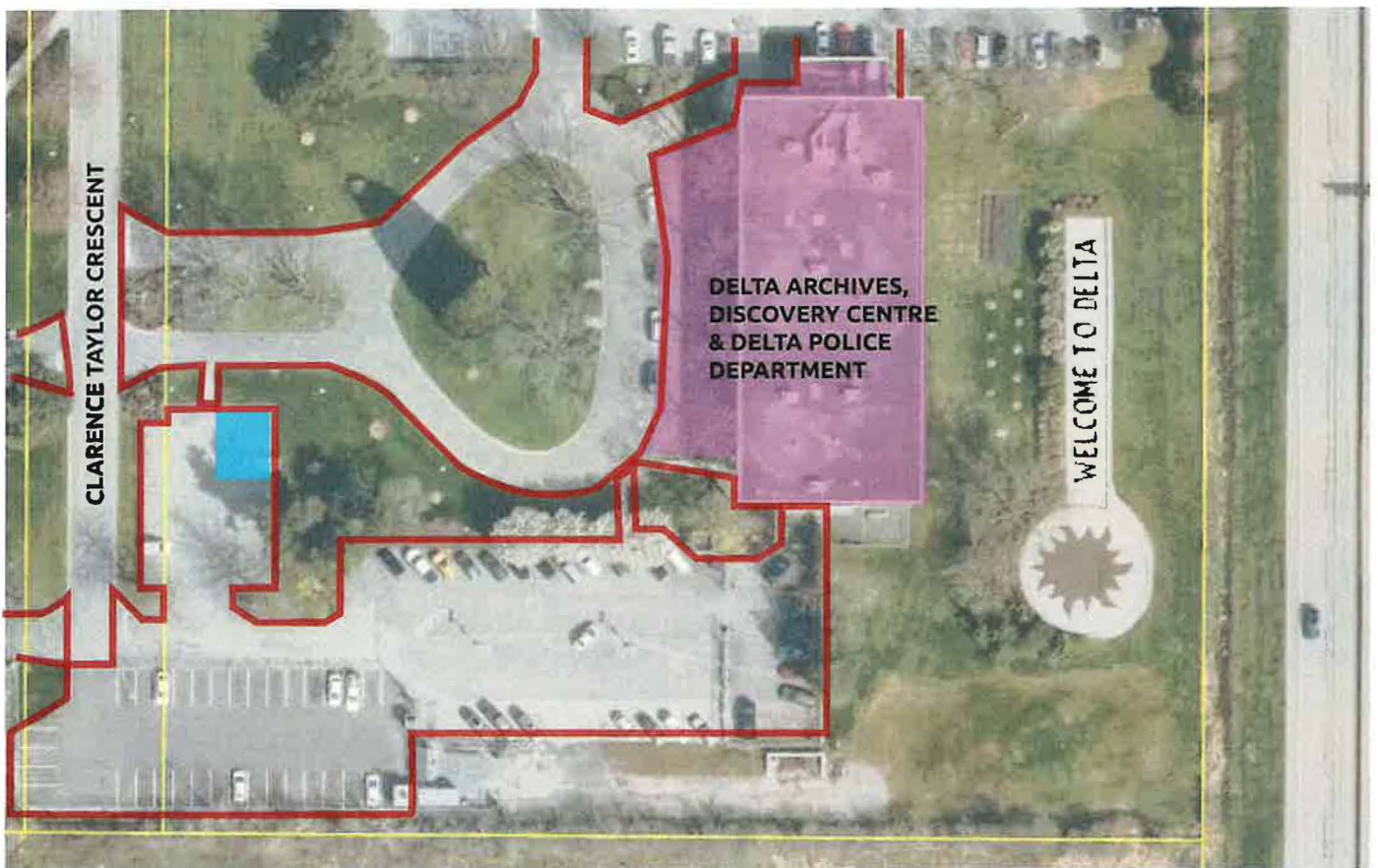
Legend:

- Facility Responsibility
- Priority #1 - Operations
- Priority #3 - Operations



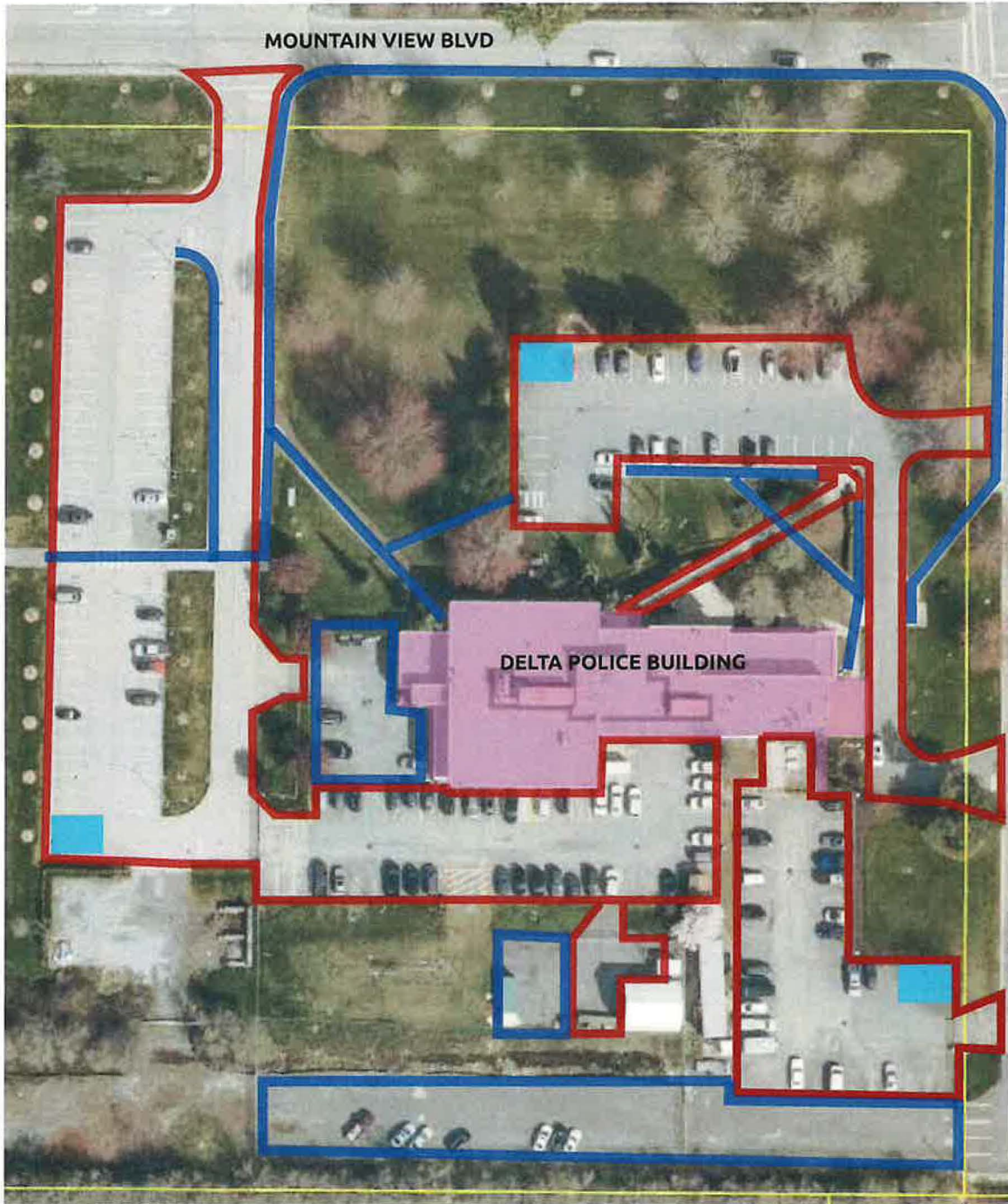
Legend:

-  Facility Responsibility
-  Priority #1 - Operations






Legend:

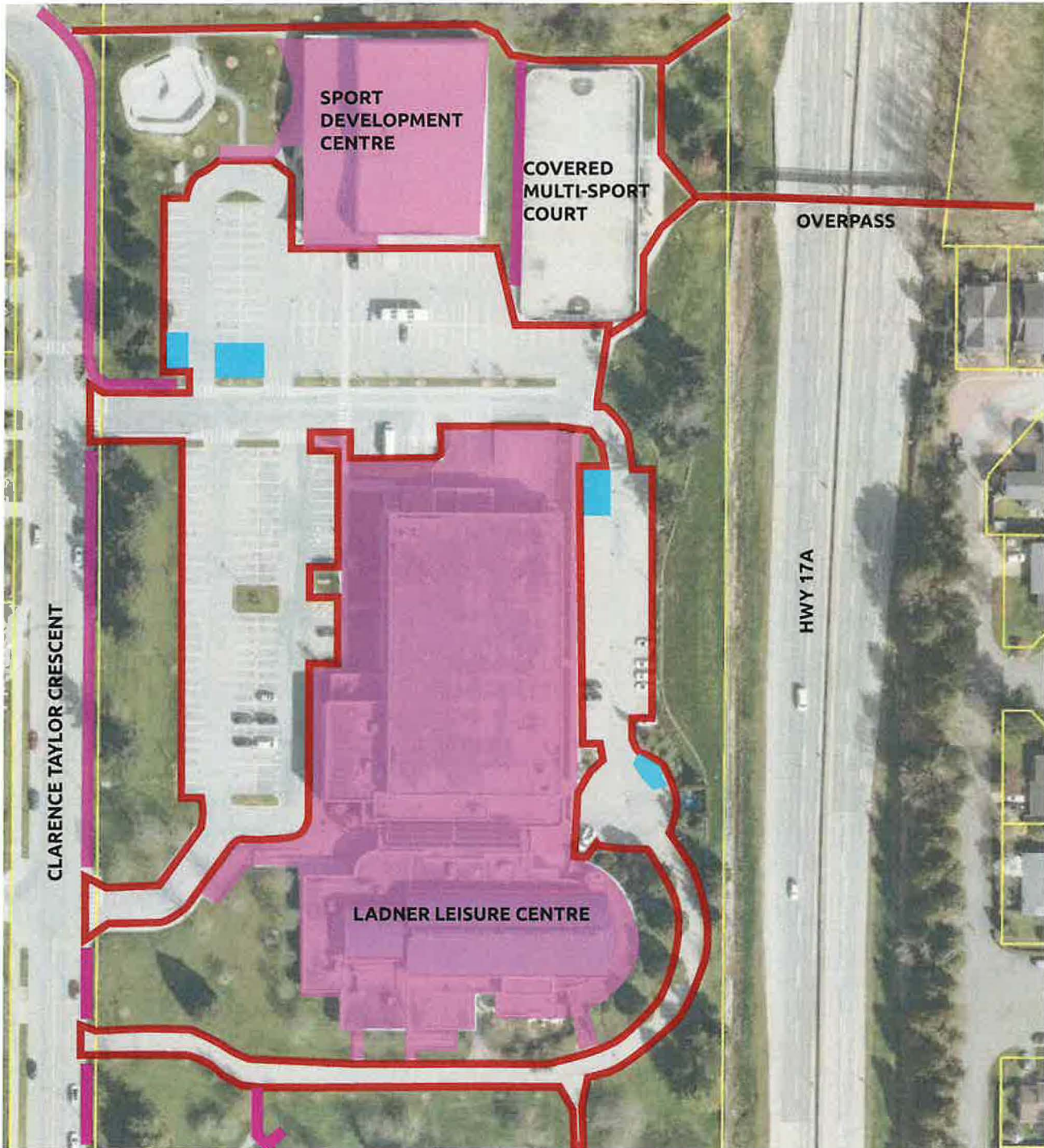
- Facility Responsibility
- Priority #1 - Operations
- Priority #2 - Operations
- Snow Piles - Operations



Legend:



-  Facility Responsibility
-  Priority #1 - Operations
-  Snow Piles - Operations

***Snow removal on overpass is required**

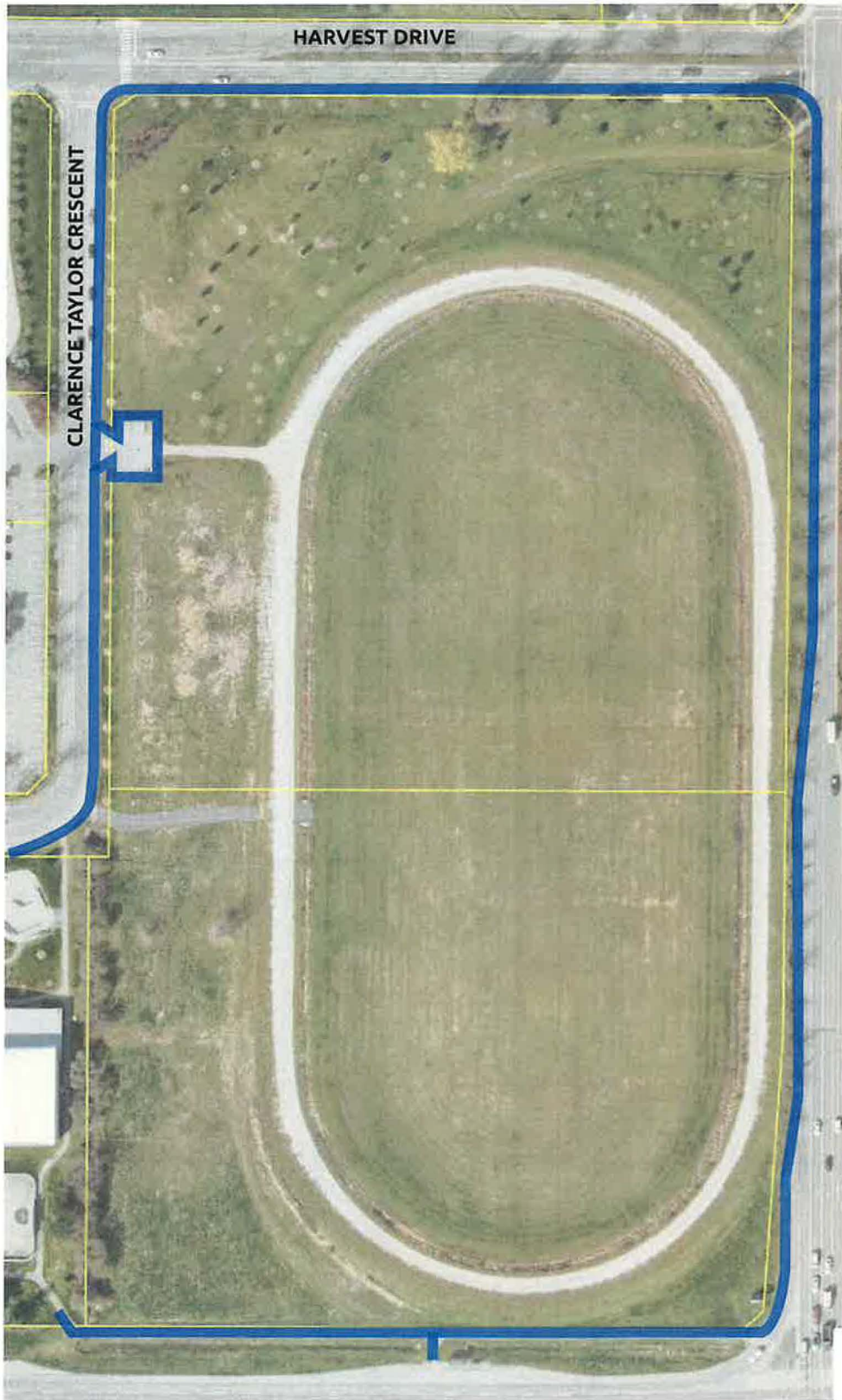




Legend:




-  Priority #3 - Operations
-  Snow Piles - Operations





Legend:
■ Priority #2 - Operations

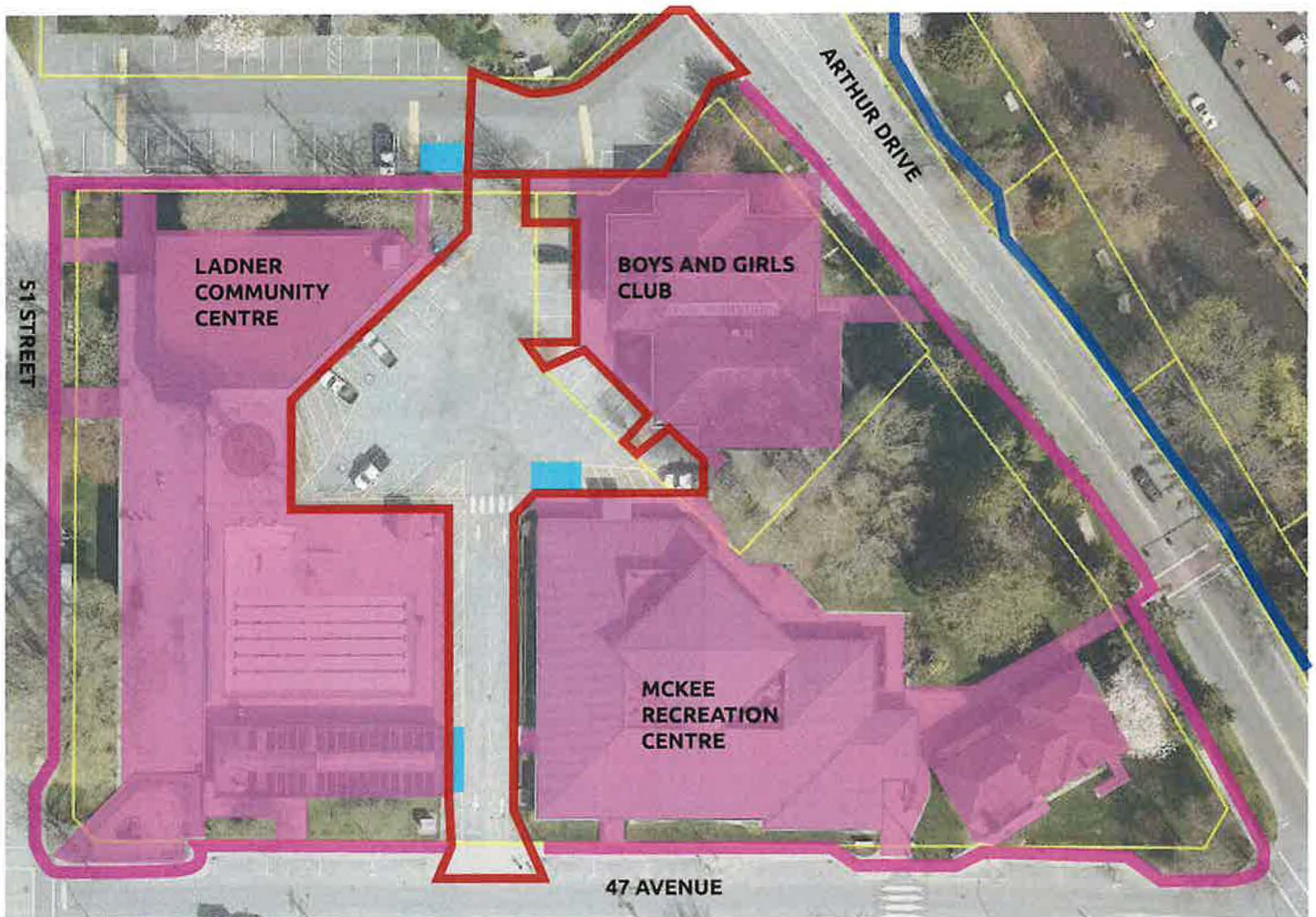
Legend:

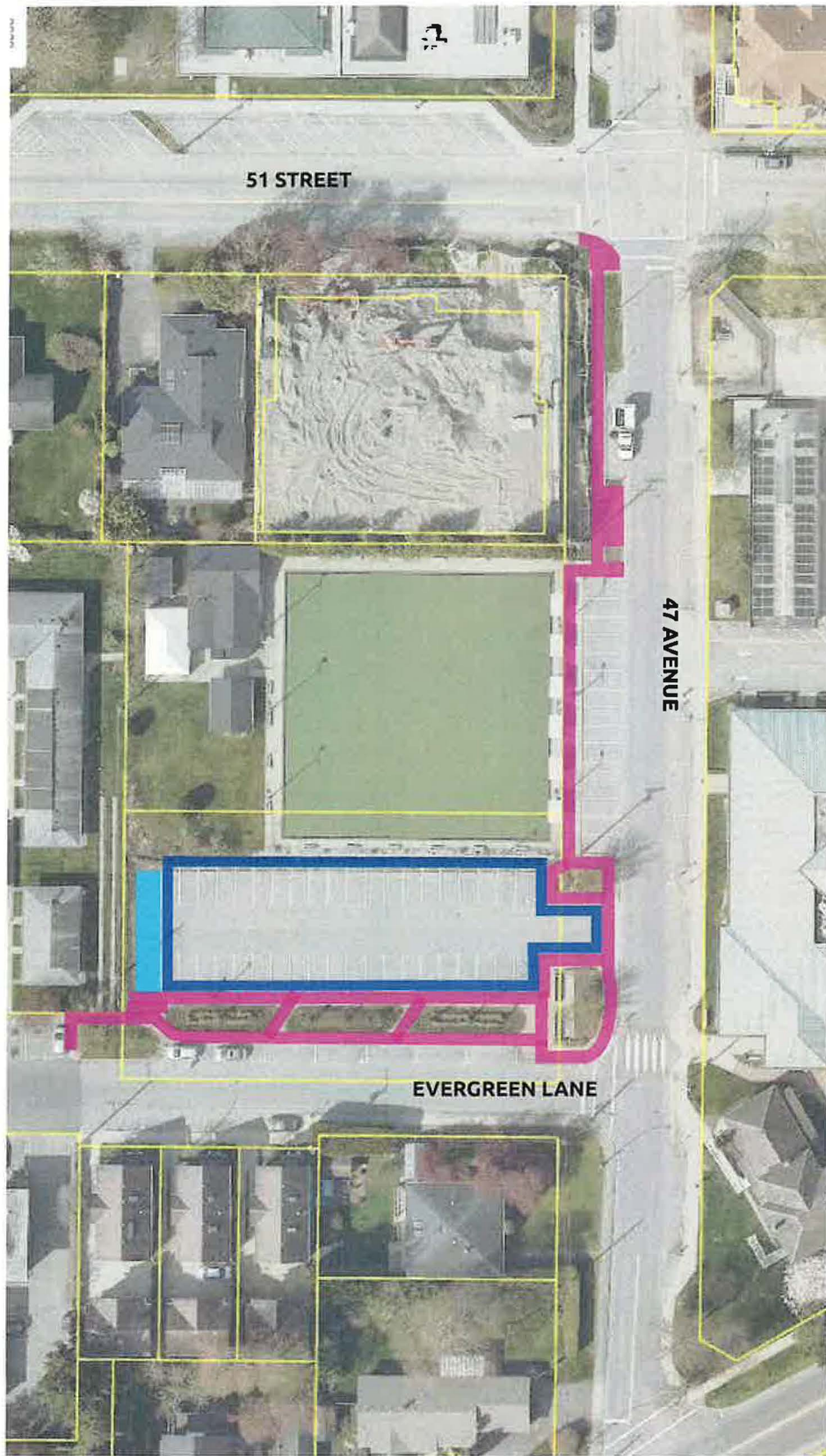
-  Facility Responsibility
-  Priority #1 - Operations
-  Priority #2 - Operations



Legend:

-  Facility Responsibility
-  Priority #1 - Operations
-  Priority #2 - Operations
-  Snow Piles - Operations

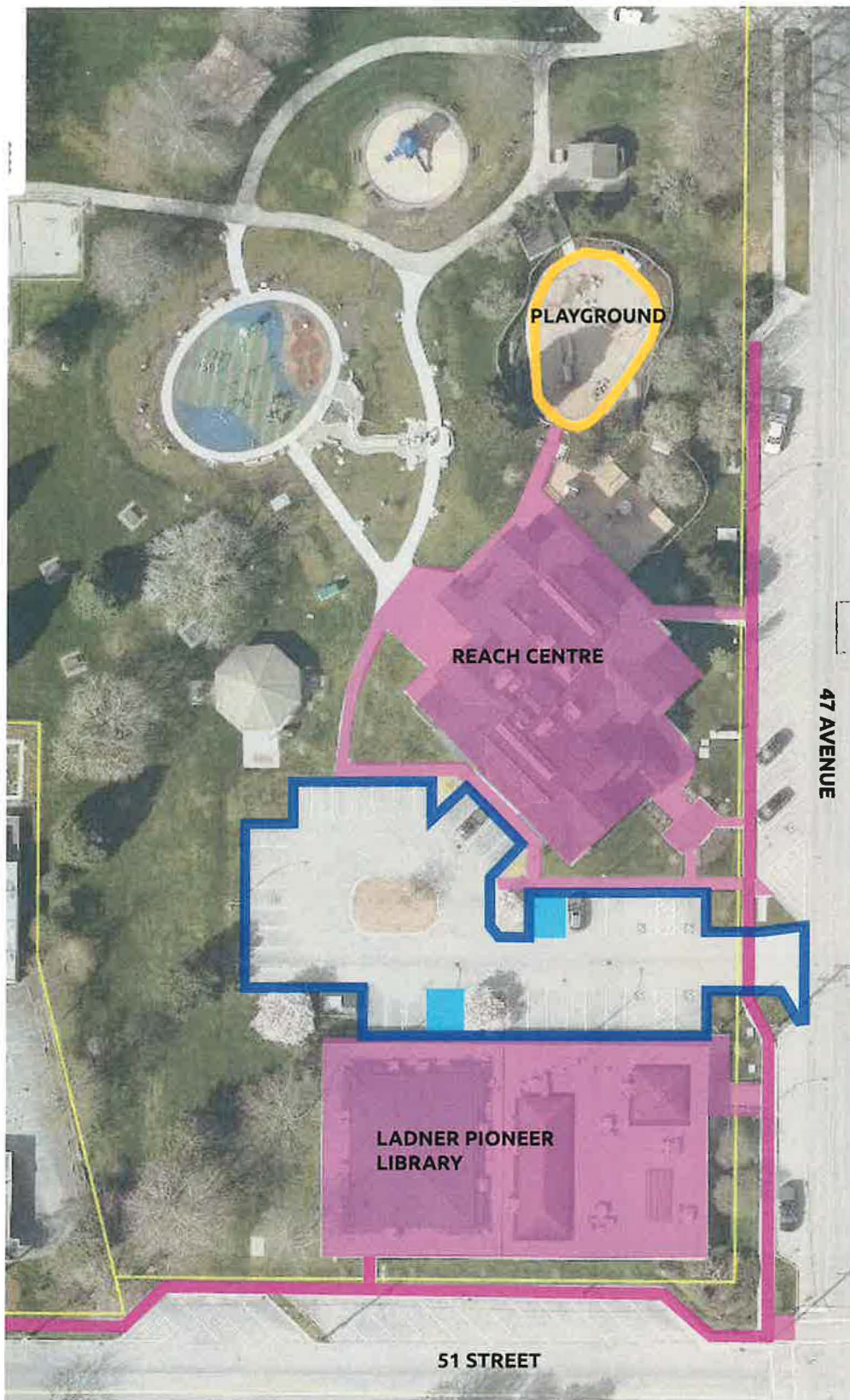




Legend:

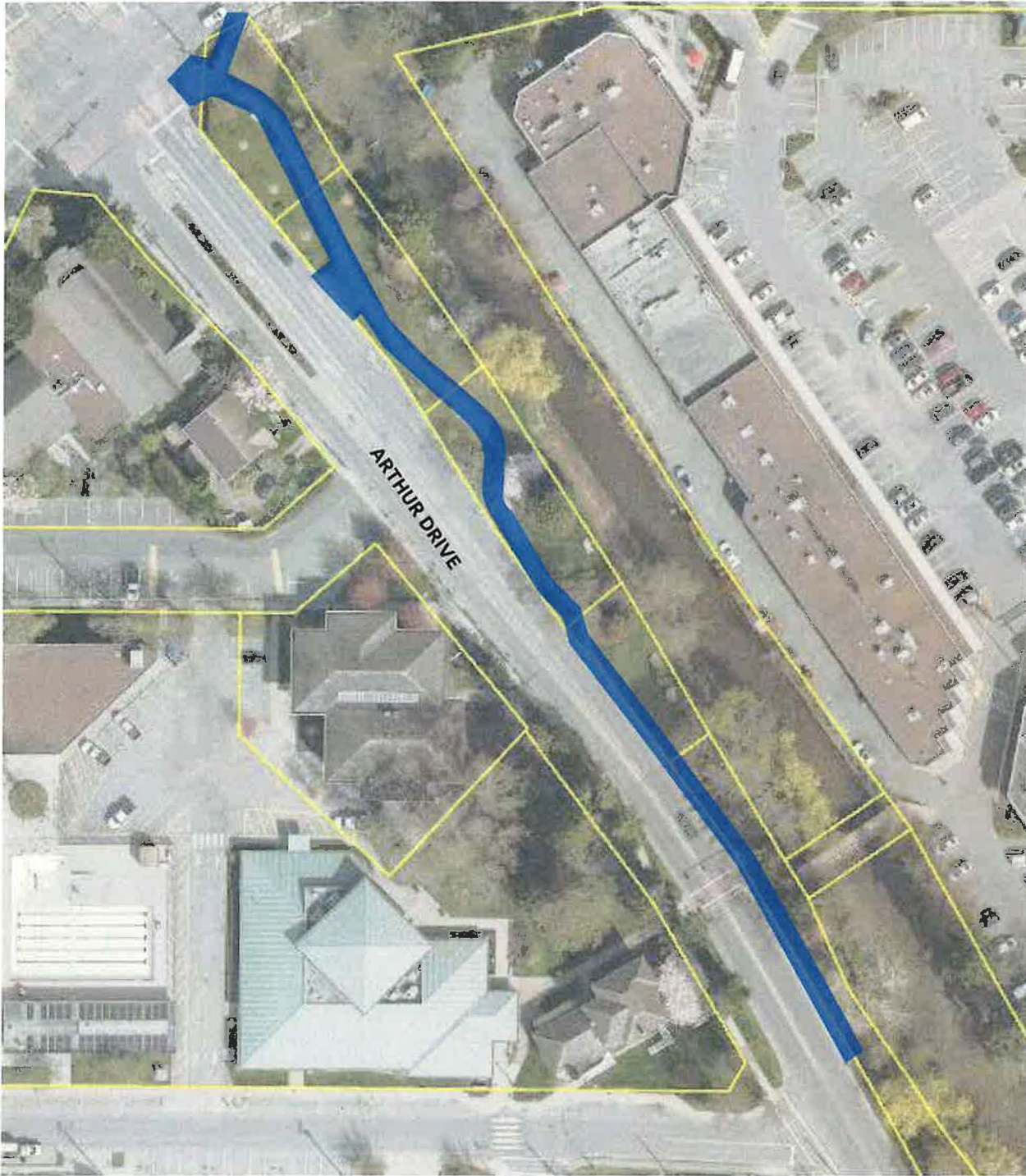
- Facility Responsibility
- Priority #1 - Operations
- Priority #2 - Operations
- Snow Piles - Operations





Legend:

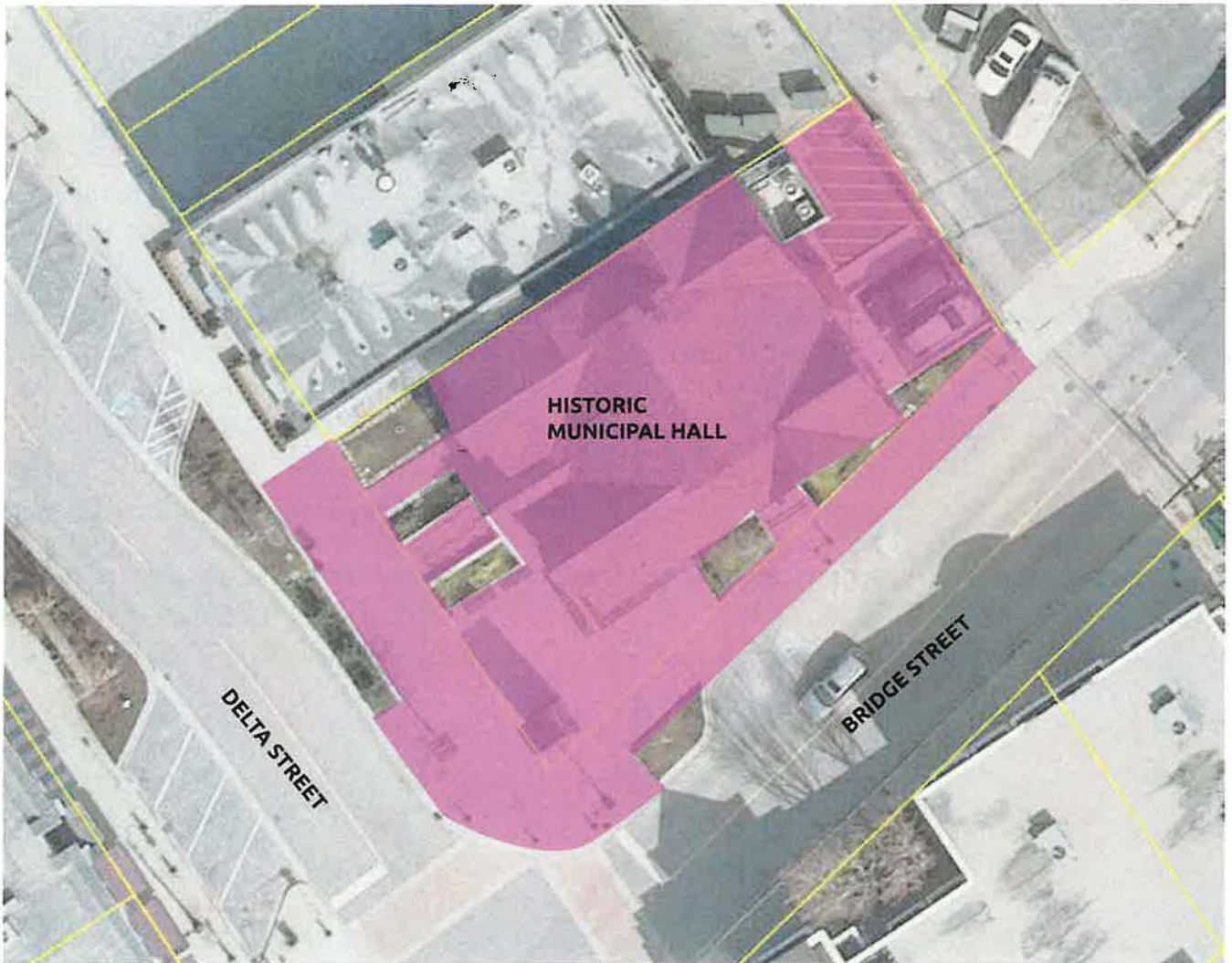
- Facility Responsibility
- Priority #2 - Operations
- Snow Piles - Operations
- Priority #3 Operations



Legend:

 Priority #2 - Operations





Legend:

 Facility Responsibility

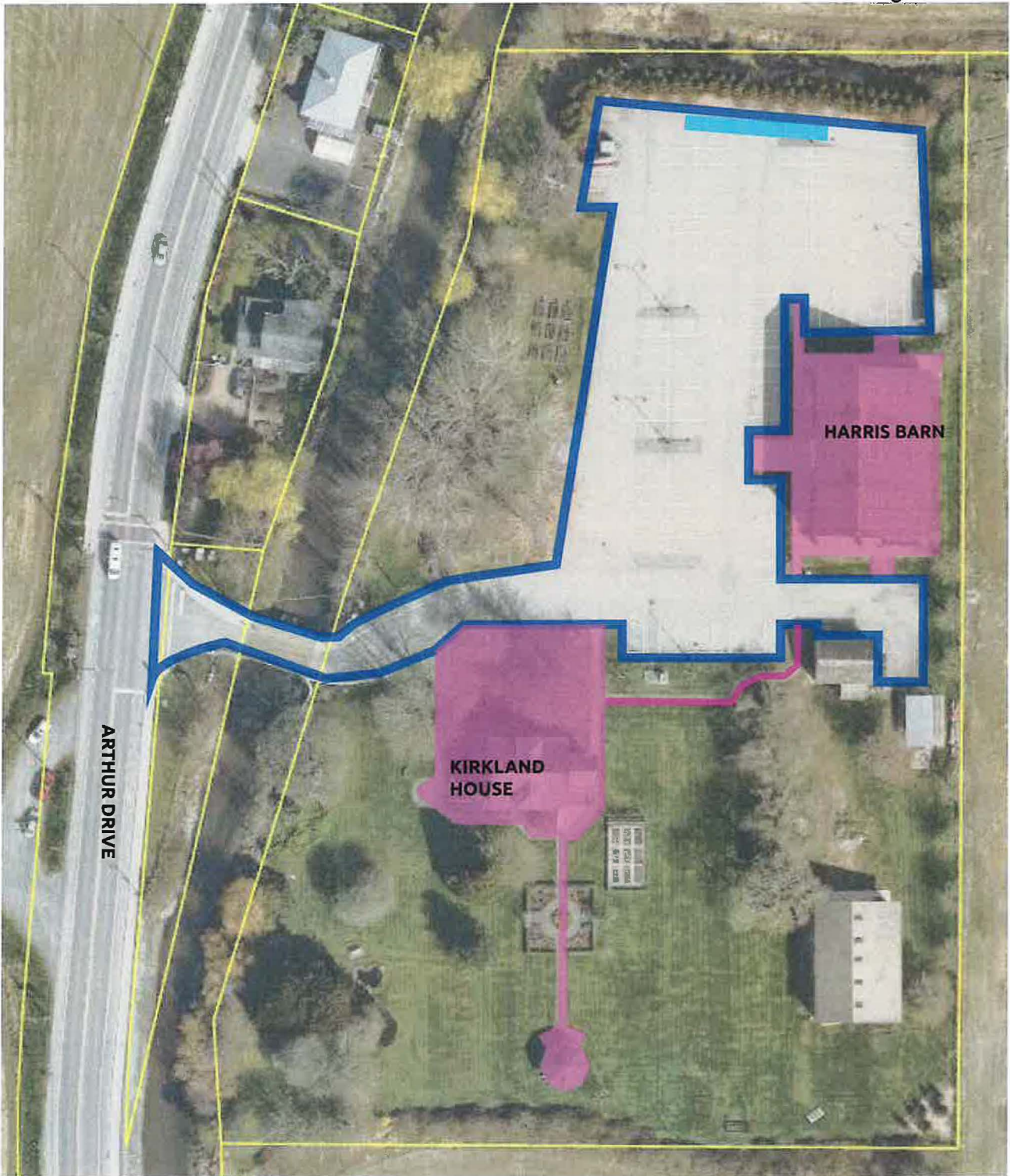







Legend:

-  Priority #3 - Operations
-  Snow Piles - Operations







Legend:

-  Facility Responsibility
-  Priority #2 - Operations
-  Snow Piles - Operations




Legend:

-  Facility Responsibility
-  Priority #2 - Operations



Legend:

 Priority #2 - Operations





Legend:

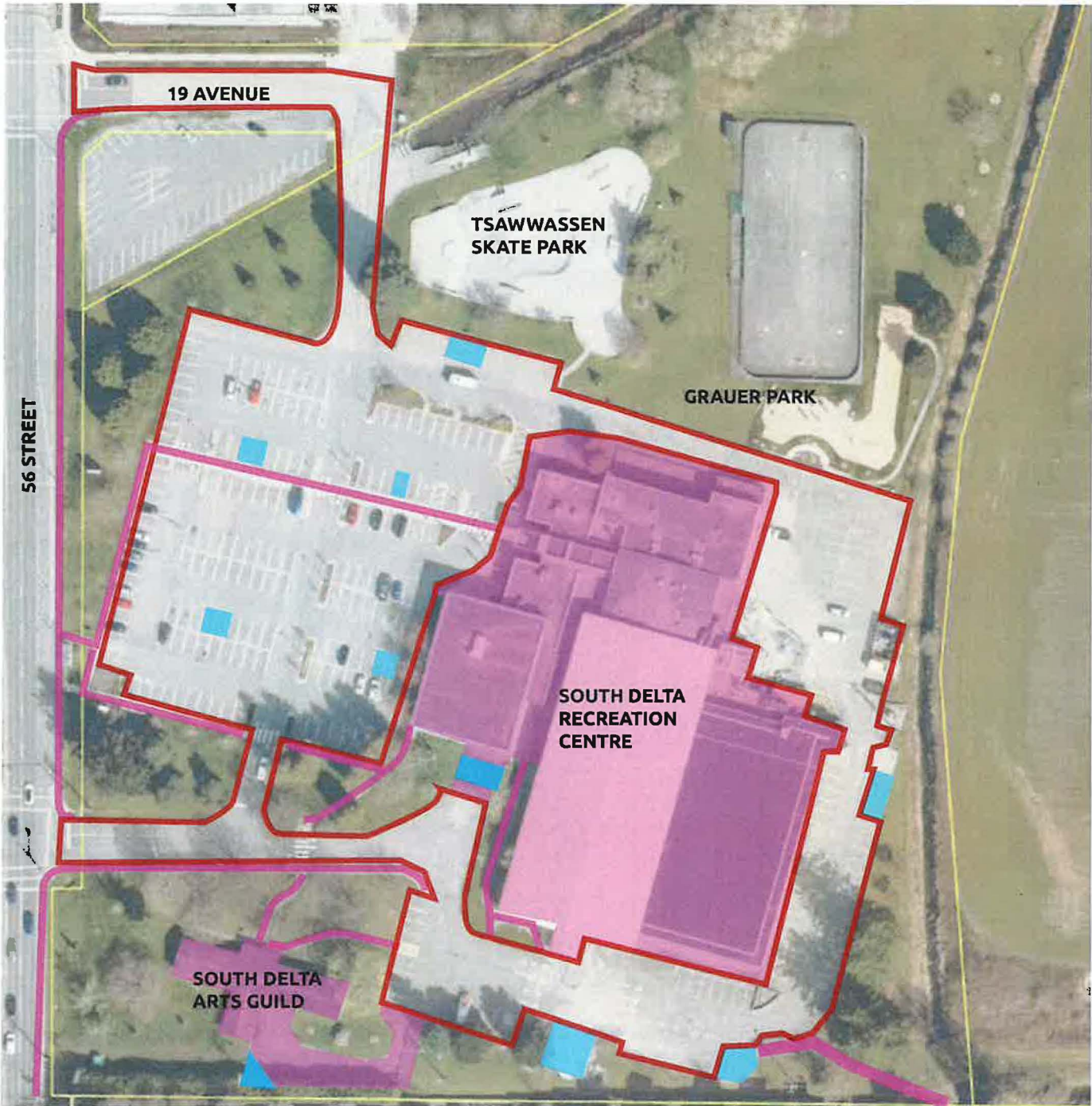
- Facility Responsibility
- Priority #1 - Operations
- Priority #2 - Operations
- Snow Piles - Operations







TSAWWASSEN FACILITIES

FACILITY	MAP
South Delta Recreation Centre & Grauer Park	T1
Tsawwassen Arts Centre	T2
Royal Oak Community Centre	T3
Winkill Aquatic and Fitness Centre	T4
Winkill Park	T5
Boundary Bay Cemetery	T6
Firehall #2	T7
Fred Gingell Park	T8

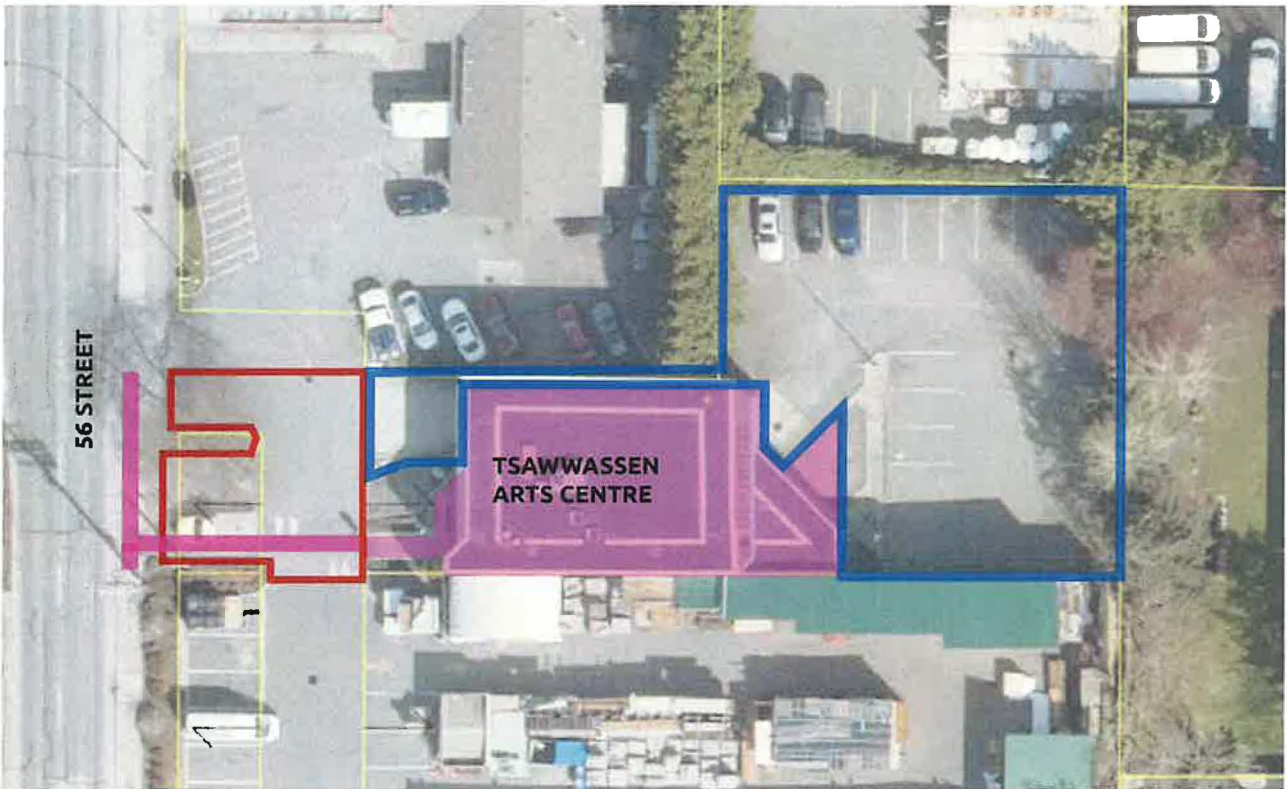
Date: November 2024






Legend:

-  Facility Responsibility
-  Priority #1 - Operations
-  Priority #2 - Operations
-  Snow Piles - Operations

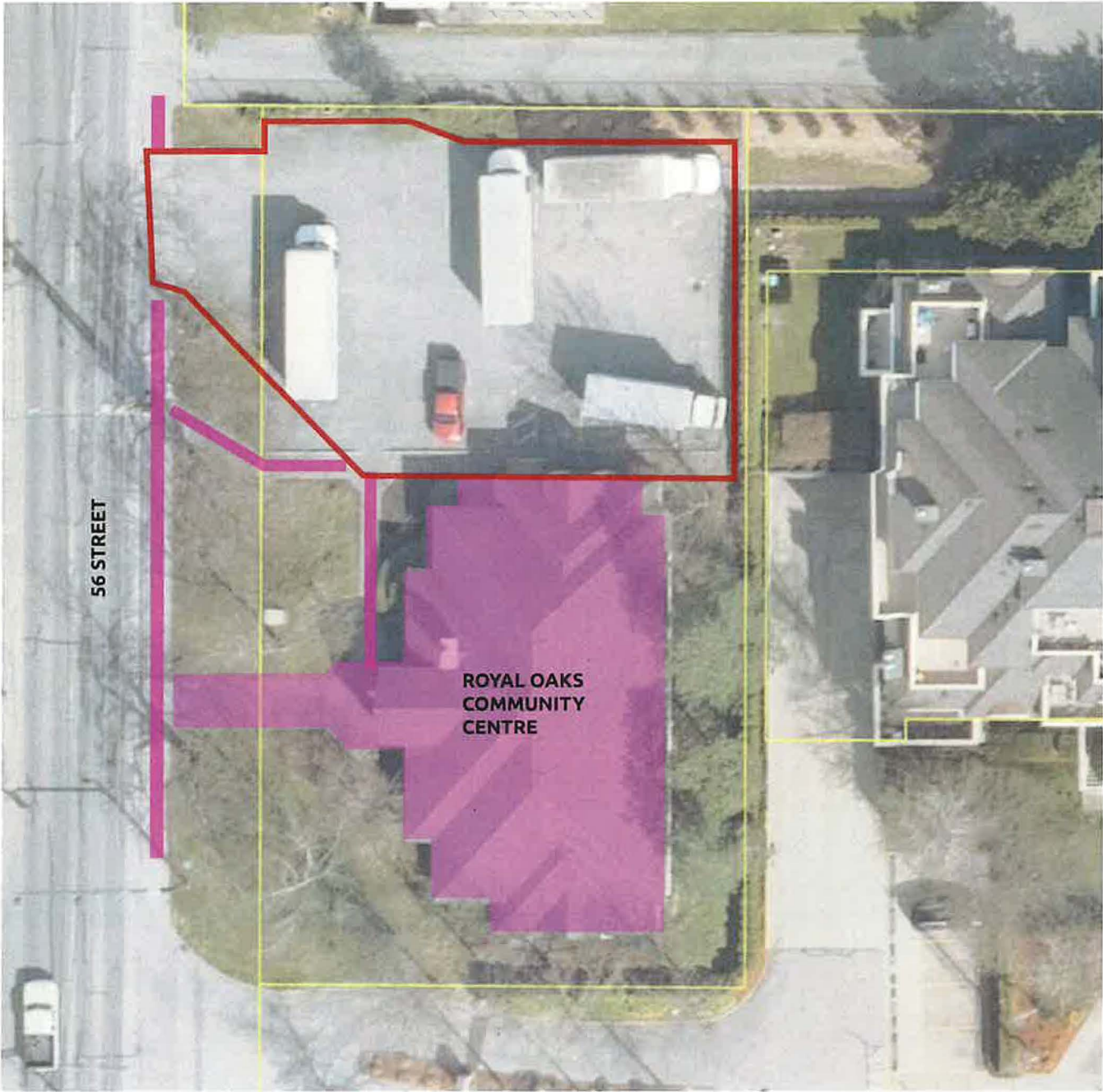




Legend:

-  Facility Responsibility
-  Priority #1 - Operations
-  Priority #2 - Operations







Legend:

- Facility Responsibility
- Priority #1 - Operations
- Priority #2 - Operations



Legend:

-  Facility Responsibility
-  Priority #1 - Operations



**NOTE: SEE NEXT PAGE
(PAGE NO. T5) FOR THE
REST OF WINKILL PARK
AND LAWN BOWLING
FACILITY**





- Legend:**
- Facility Responsibility
 - Priority #1 - Operations
 - Priority #2 - Operations



Legend:

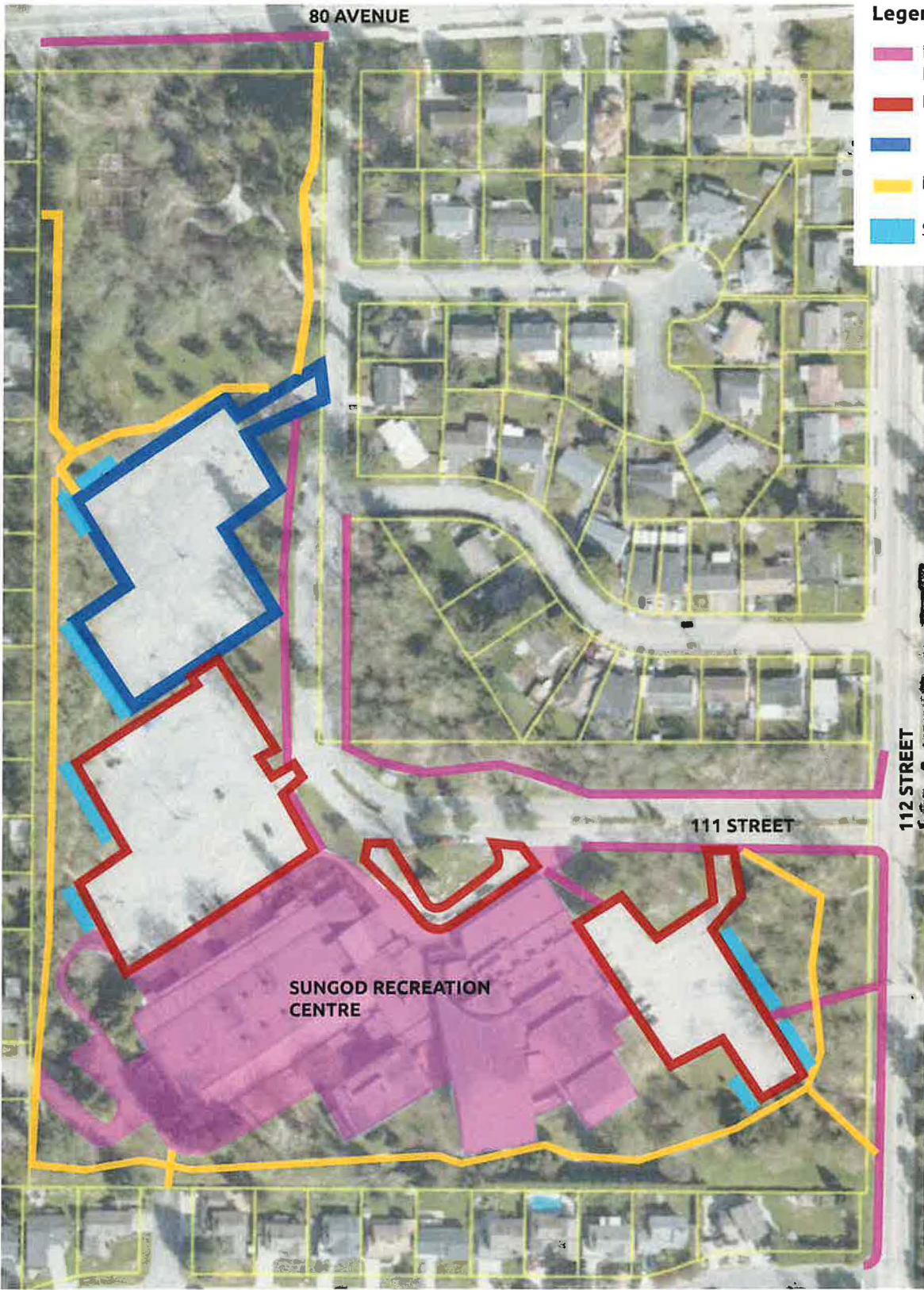
- Facility Responsibility
- Priority #1 - Operations
- Priority #2 - Operations



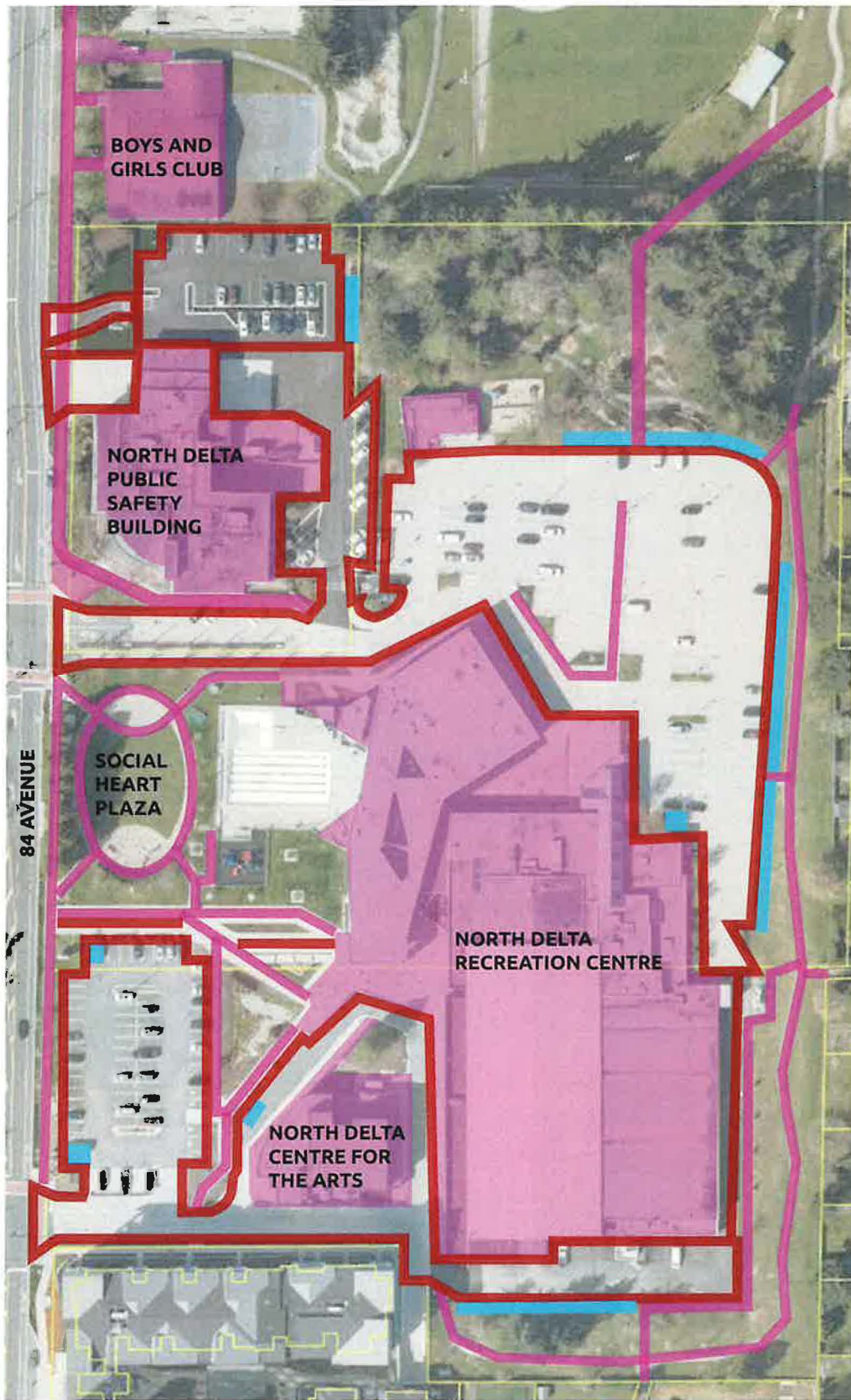
NORTH DELTA FACILITIES

FACILITY	MAP
Sungod Recreation Centre & McKitrick Park	N1
North Delta Recreation Centre & North Delta Public Safety Building	N2
George Mackie Library	N3
Sunbury Hall	N4
Kennedy Recreation Centre	N5
North Delta Cemetery	N6
Pinewood Leisure Centre	N7
Firehall #5	N8
North Delta Community Track & Field	N9





Date: November 2024

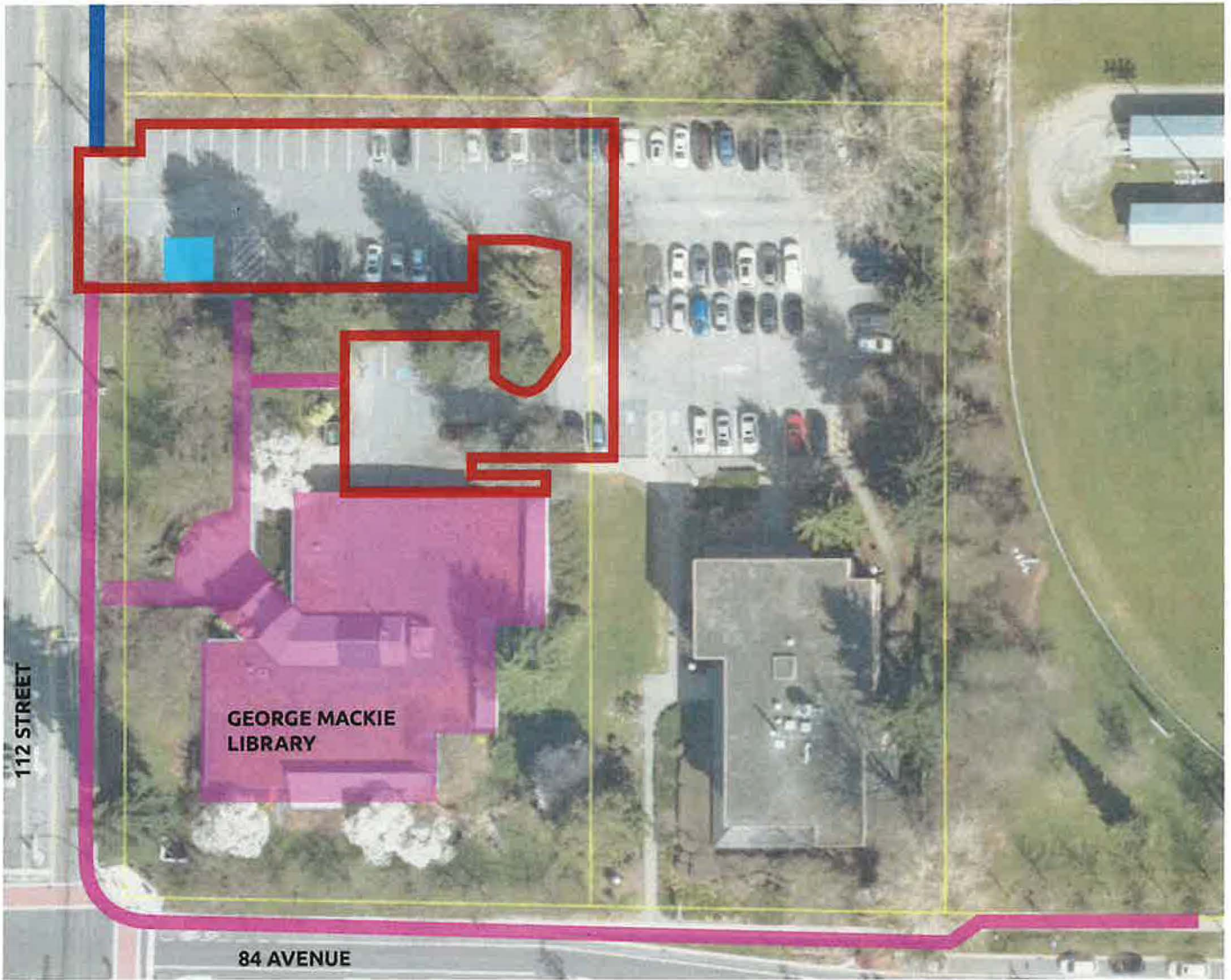


- Legend:**
- Facility Responsibility
 - Priority #1 - Operations
 - Priority #2 - Operations
 - Priority #3 - Operations
 - Snow Piles - Operations







Legend:

-  Facility Responsibility
-  Priority #1 - Operations
-  Priority #2 - Operations
-  Snow Piles - Operations






Legend:

-  Facility Responsibility
-  Priority #1 - Operations
-  Priority #2 - Operations
-  Snow Piles - Operations









Legend:

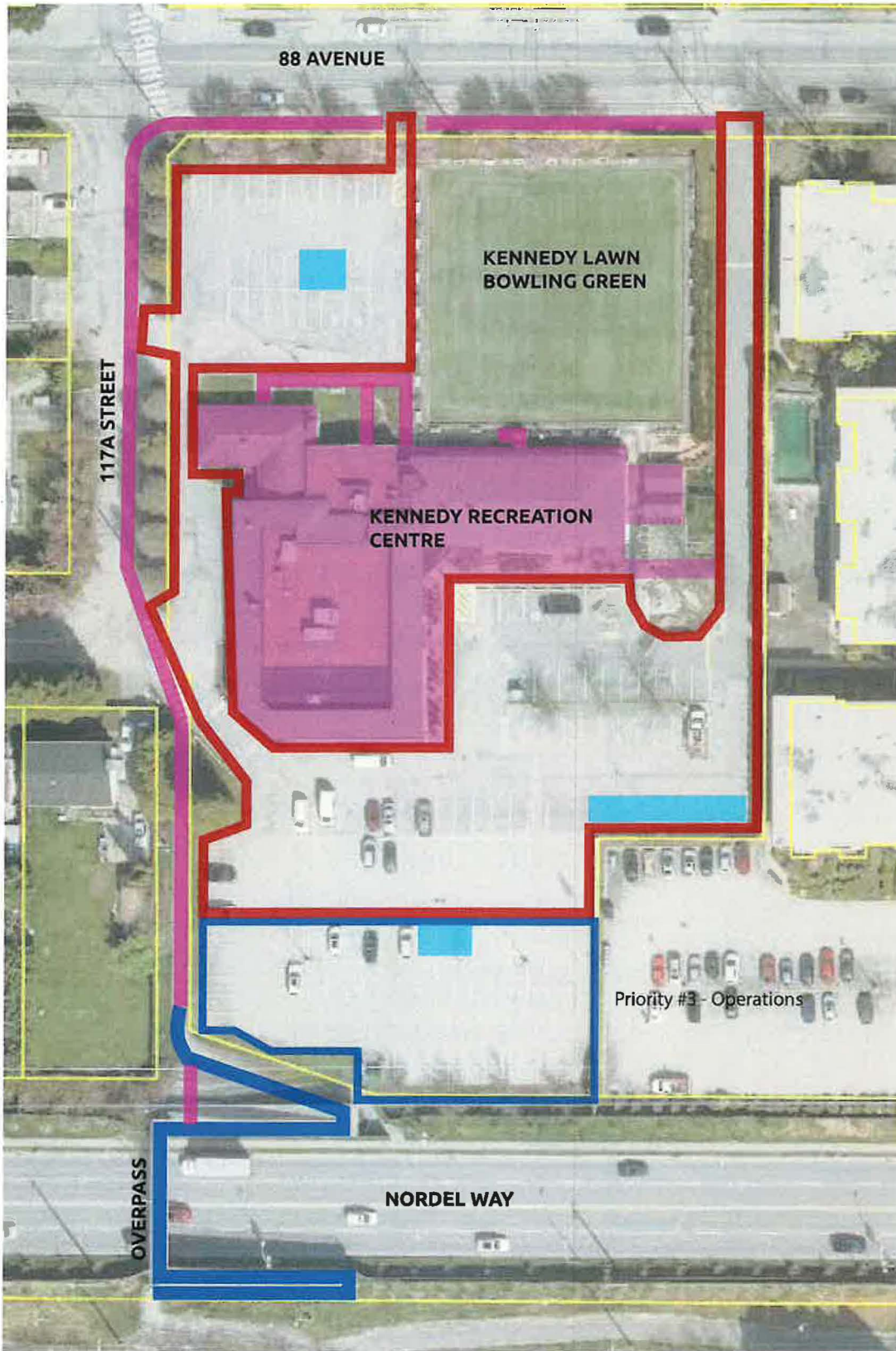
-  Facility Responsibility
-  Priority #2 - Operations
-  Snow Piles - Operations

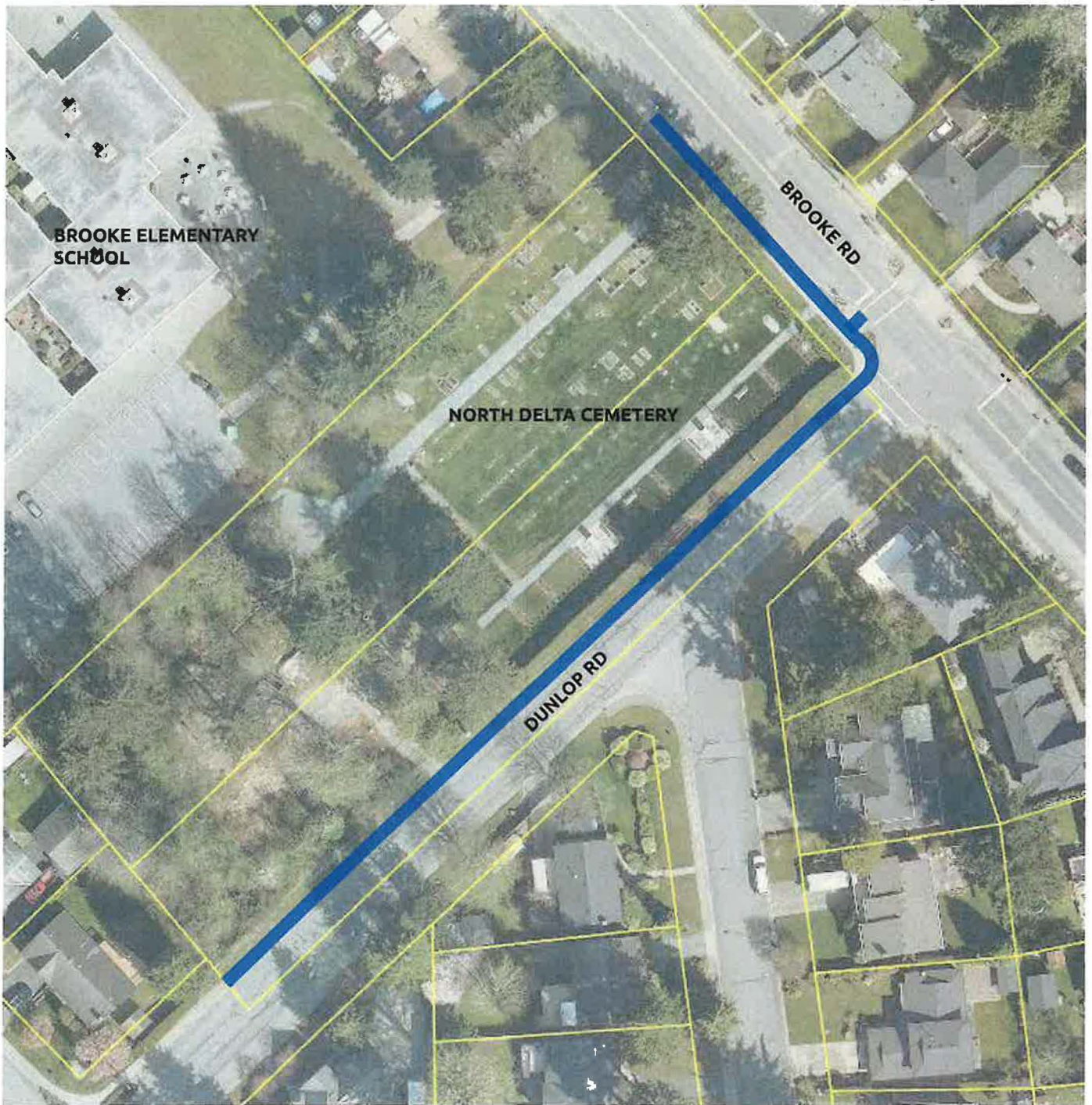


Legend:

-  Facility Responsibility
-  Priority #1 - Operations
-  Priority #2 - Operations
-  Snow Piles - Operations

***Snow removal on overpass is required**

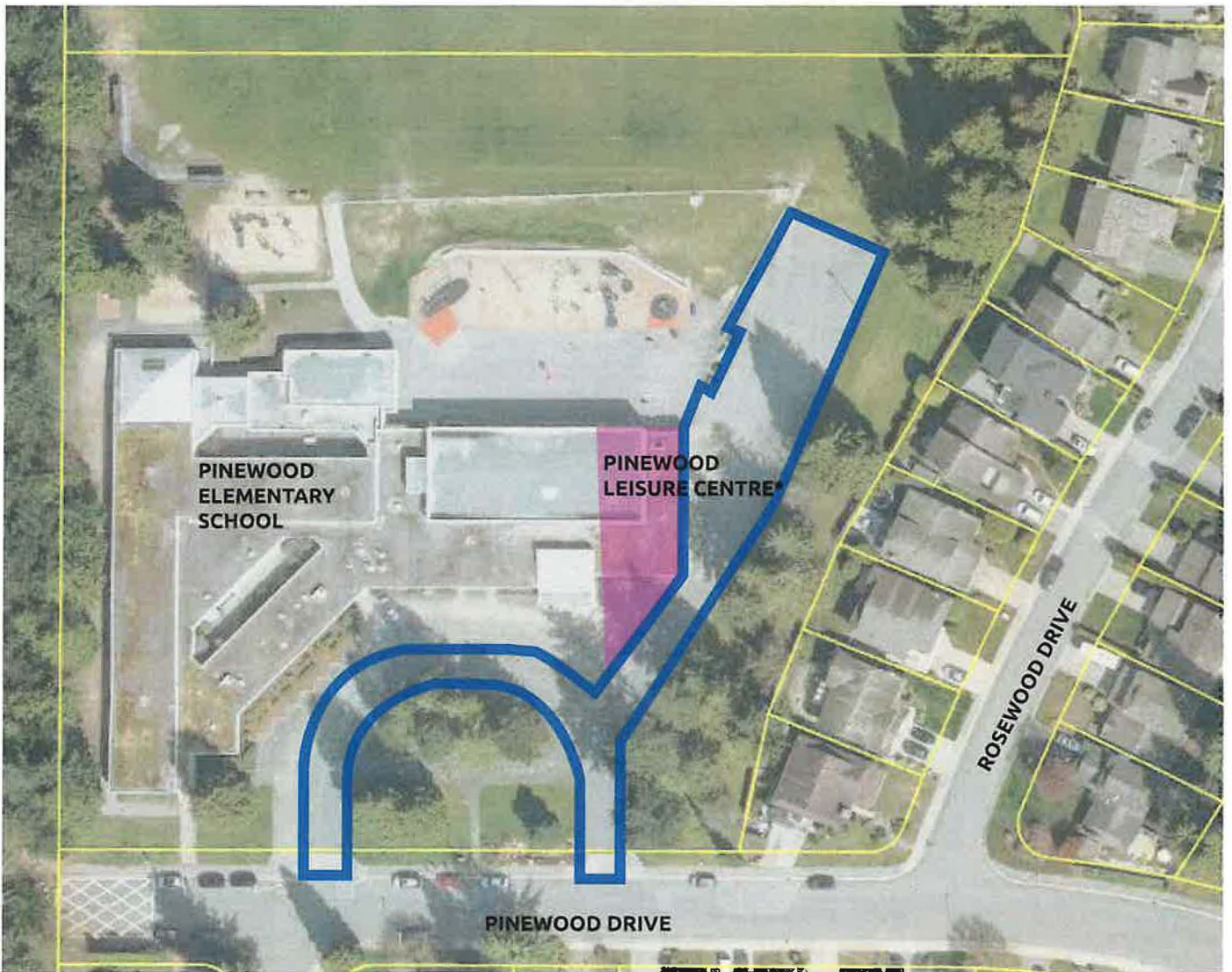






Legend:

 Priority #2 - Operations



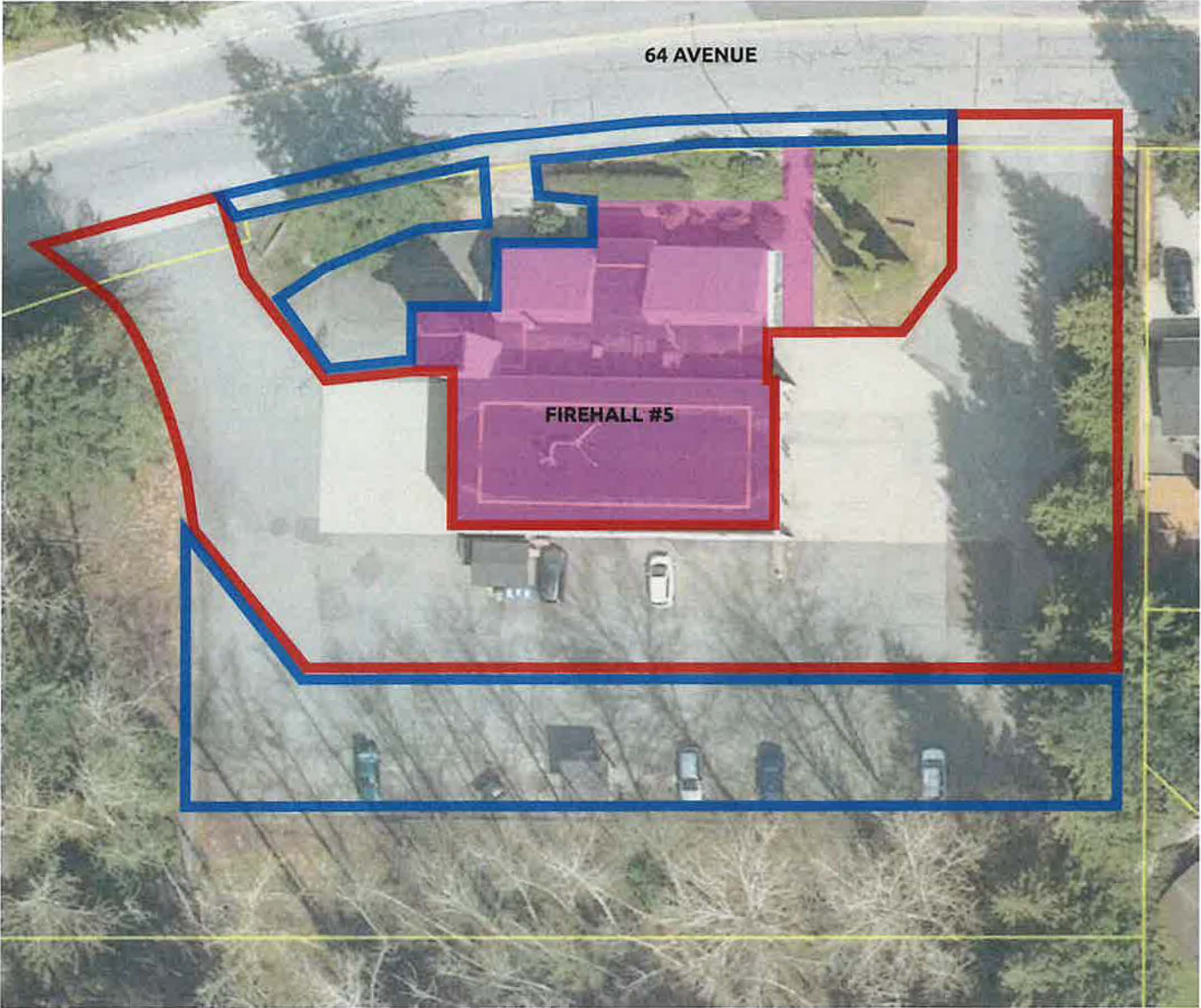


Legend:




-  Facility Responsibility
-  Priority #2 - Operations

***Snow removal only for
Delta scheduled
programs**



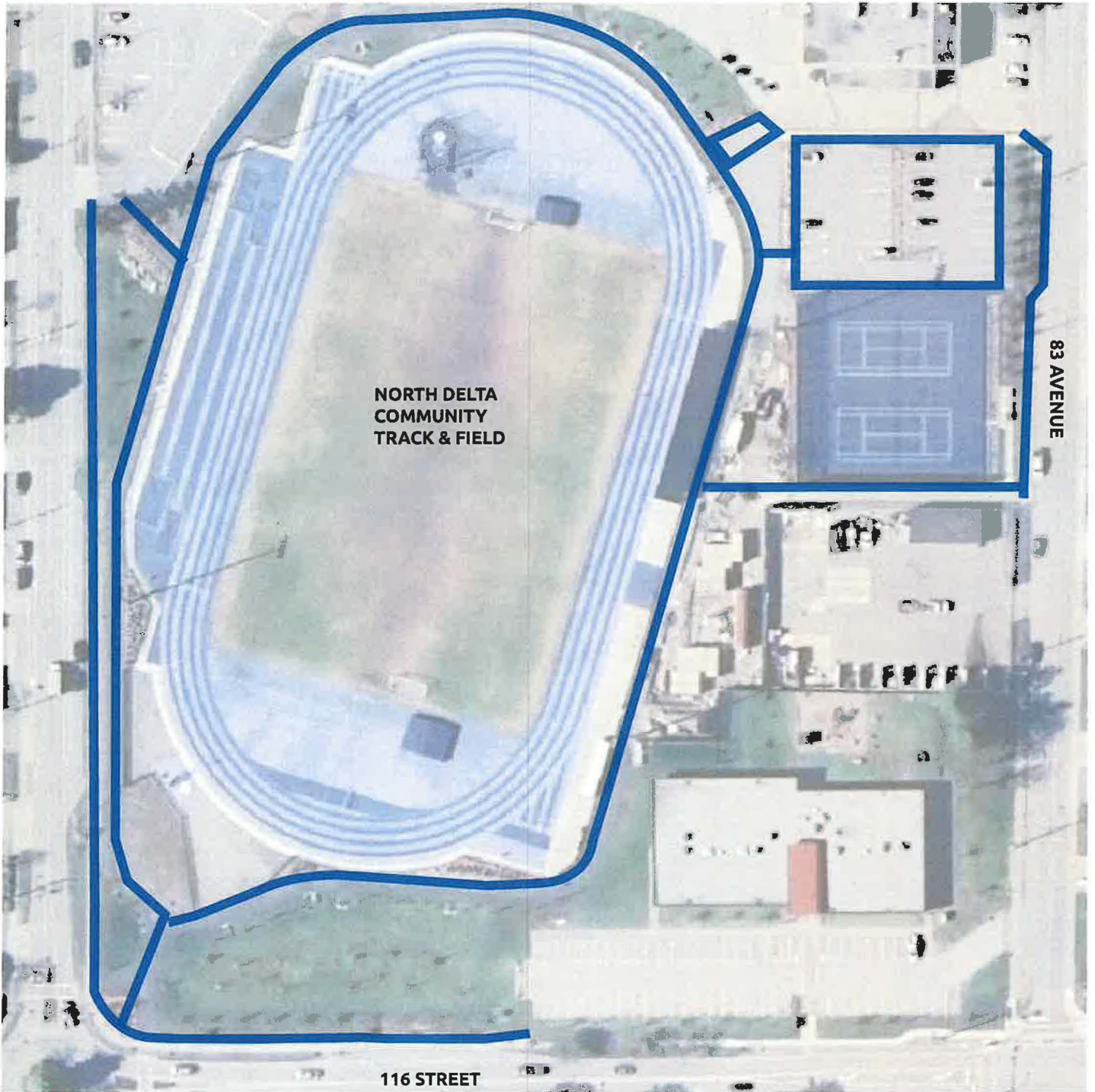


Legend:

-  Facility Responsibility
-  Priority #1 - Operations
-  Priority #2 - Operations



**NORTH DELTA
SECONDARY SCHOOL**



Legend:

 Priority #2 - Operations

