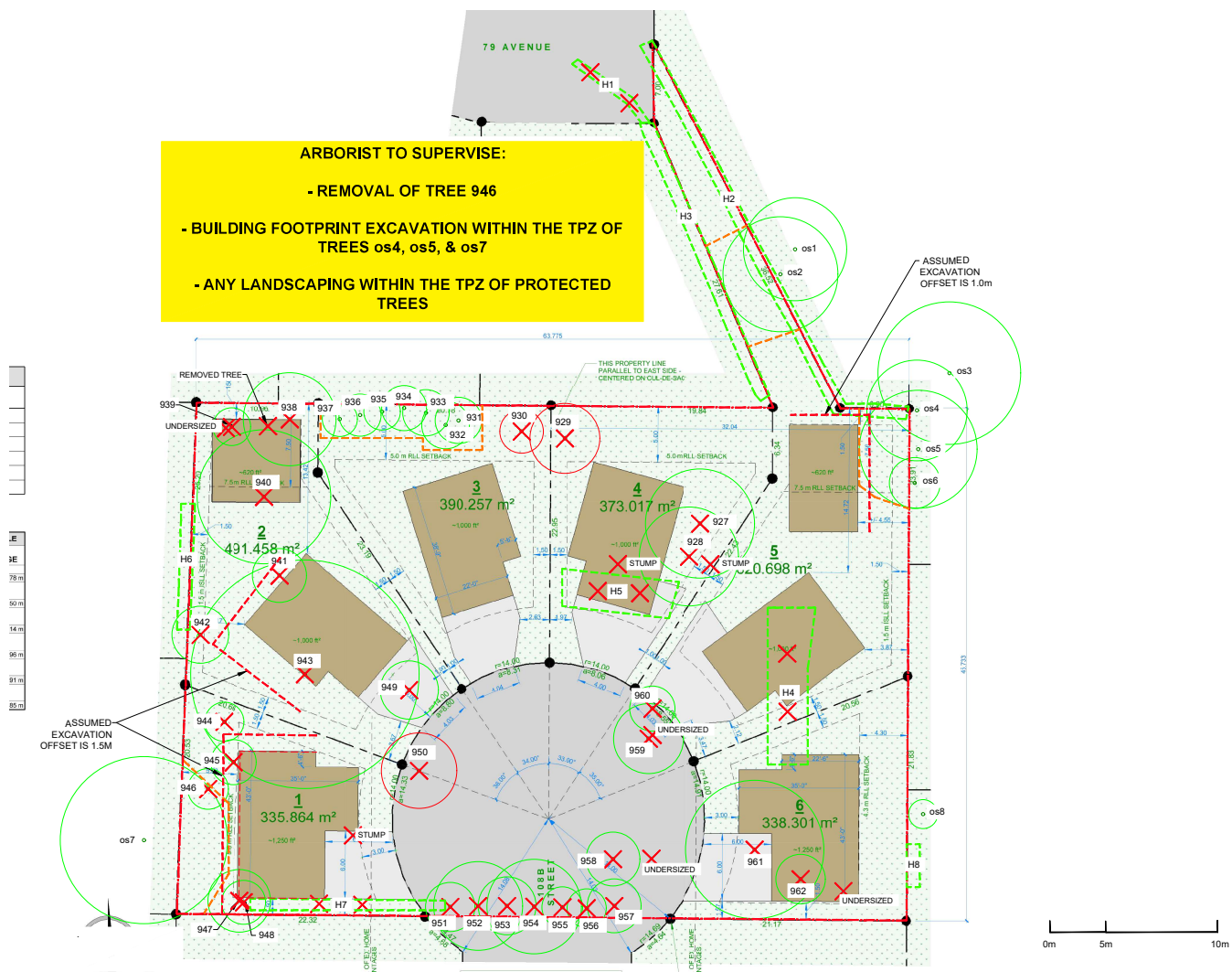


ARBORIST TO SUPERVISE:

- REMOVAL OF TREE 946
- BUILDING FOOTPRINT EXCAVATION WITHIN THE TPZ OF TREES os4, os5, & os7
- ANY LANDSCAPING WITHIN THE TPZ OF PROTECTED TREES



LEGEND

- = Tree Location
- (with red border) = Non Surveyed Tree
- (with blue border) = Undersize Tree
- ✗ = Remove Tree
- = Tree Barrier
- - - = Assumed Excavation
- = Dtipline

NOTE: TREE LOCATION

NOTES:

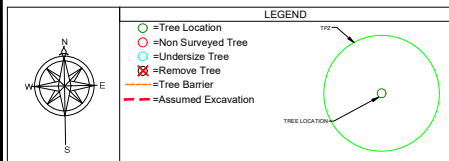
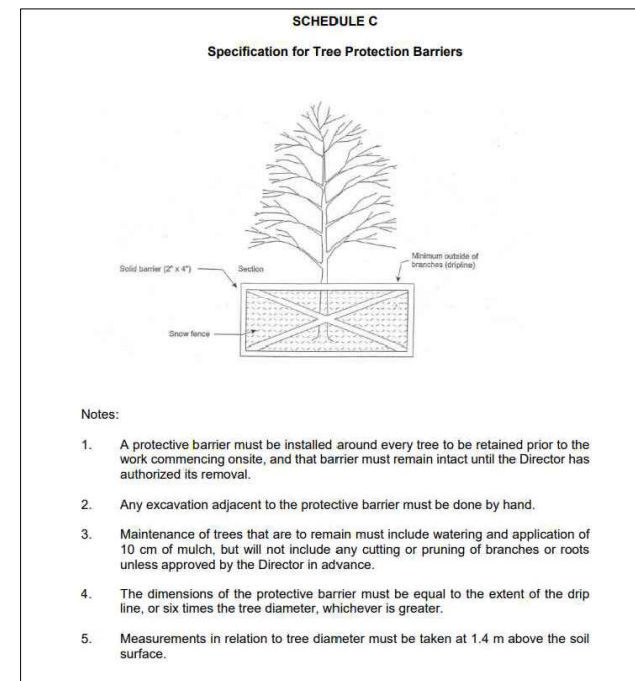
- RED TPZ INDICATES POOR HEALTH RATING, ALL OTHERS ARE GOOD OR MODERATE
- UNDERSIZED TREES ARE LESS THAN 20cm DBH
- NON SURVEYED TREE LOCATIONS ARE APPROXIMATE. LOCATIONS CAN ONLY BE CONFIRMED BY A REGISTERED BC LAND SURVEYOR
- TREE TPZ DISTANCES ARE IN METERS. TPZ DISTANCE IS MEASURED FROM THE EDGE OF THE TREE TRUNK

TREE PLAN FOR CONSTRUCTION AT
10890 79 AVENUE, DELTA
 SCALE: 1:400
 DATE: SEPTEMBER 12, 2025



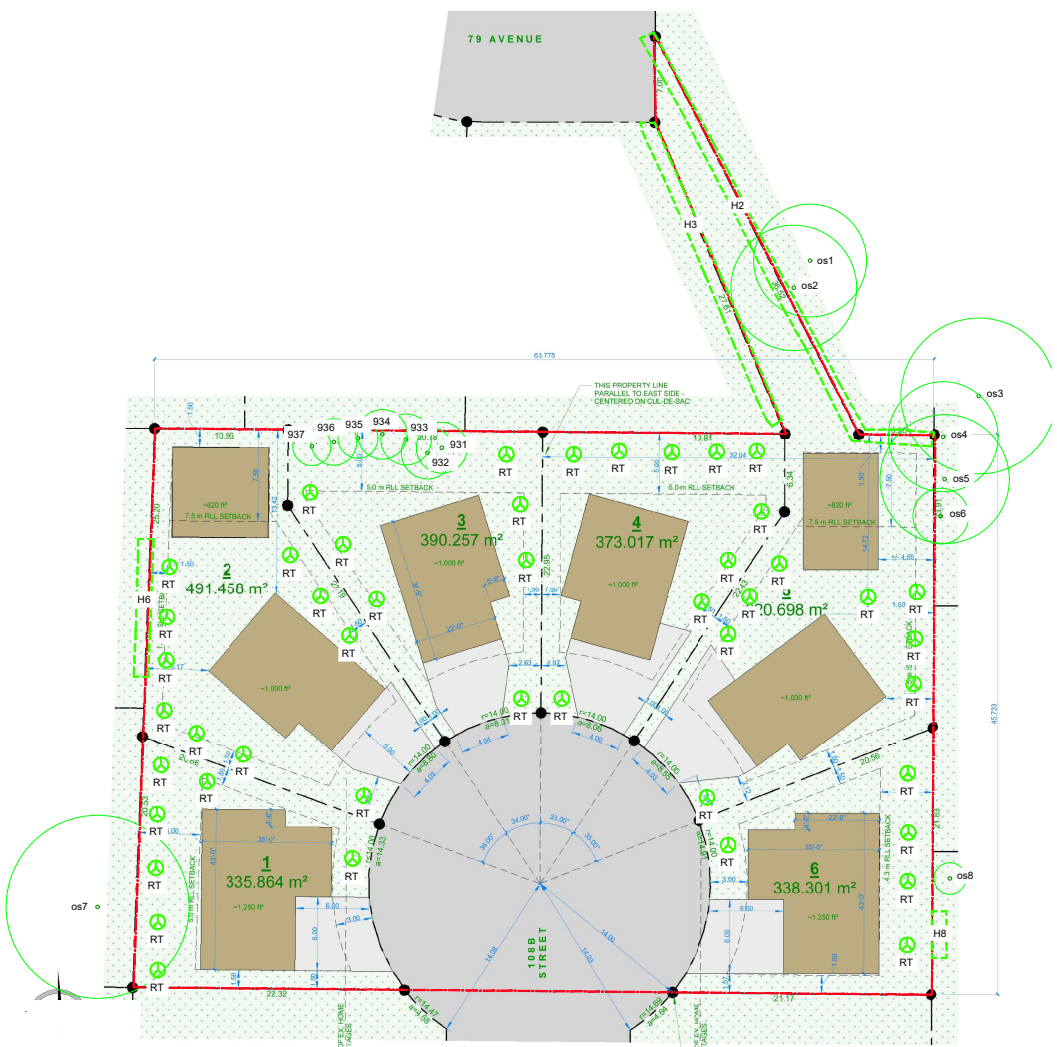
TREE INVENTORY			
TAG #	SPECIES	DBH (cm)	TPZ (m)
927	DOUGLAS FIR	75	4.50
928	DOUGLAS FIR	68	4.08
929	HAZELNUT	48	2.88
930	HAZELNUT	30	1.80
931	WESTERN RED CEDAR	32	1.92
932	WESTERN RED CEDAR	33	1.98
933	WESTERN RED CEDAR	32	1.92
934	WESTERN RED CEDAR	31	1.86
935	WESTERN RED CEDAR	25	1.50
936	WESTERN RED CEDAR	29	1.50
937	WESTERN RED CEDAR	24	1.44
938	DOUGLAS FIR	64	3.84
939	CYPRESS	26	1.56
940	CHERRY TREE	92	5.52
941	HOLLY	37	2.22
942	CHERRY TREE	39	2.34
943	DOUGLAS FIR	157	9.42
944	WESTERN RED CEDAR	27	1.62
945	WESTERN RED CEDAR	31	1.86
946	WESTERN RED CEDAR	28	1.68
947	HOLLY	43	2.58
948	HOLLY	30	1.80
949	BLUE ATLAS CEDAR	40	2.40
950	ATLAS CEDAR	52	3.12
951	YEW	34	2.04

TREE INVENTORY			
TAG #	SPECIES	DBH (cm)	TPZ (m)
952	YEW	61	3.66
953	YEW	40	2.40
954	YEW	65	3.90
955	YEW	28	1.68
956	YEW	27	1.62
957	YEW	37	2.22
958	JAPANESE MAPLE	37	2.22
959	ENGLISH LAUREL	48	2.88
960	ENGLISH LAUREL	31	1.86
961	SITKA SPRUCE	95	5.70
962	FIG	34	2.04
OS1	DOUGLAS FIR	71	4.26
OS2	DOUGLAS FIR	79	4.74
OS3	DOUGLAS FIR	98	5.88
OS4	DOUGLAS FIR	69	4.14
OS5	DOUGLAS FIR	81	4.86
OS6	PORTUGUESE LAUREL	35	2.10
OS7	DOUGLAS FIR	115	6.90
OS8	APPLE TREE	20	1.20
H1	CEDAR HEDGE	n/a	n/a
H2	CEDAR HEDGE	n/a	n/a
H3	CEDAR HEDGE	n/a	n/a
H4	LAUREL HEDGE	20	1.20
H5	LAUREL HEDGE	n/a	n/a
H6	CEDAR HEDGE	n/a	n/a
H7	CEDAR HEDGE	n/a	n/a
H8	EVERGREEN HEDGE	n/a	n/a

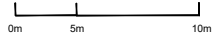


TREE PLAN FOR CONSTRUCTION AT
10890 79 AVENUE, DELTA
SCALE: NTS





SUITABLE REPLACEMENT TREES	
SPECIES	SIZE
CHINESE TUPELO, <i>Nyssa sinensis</i>	7cm CAL
BLUE SPRUCE, <i>Picea pungens</i>	3m TALL
PAPERBARK MAPLE, <i>Acer griseum</i>	7cm CAL
JAPANESE SNOWBELL, <i>Styrax japonicus</i>	7cm CAL
WESTERN RED CEDAR, <i>Thuja plicata</i>	3m TALL



LEGEND

- = Tree Location
- = Non Surveyed Tree
- = Undersize Tree
- ✗ = Remove Tree
- = Tree Barrier
- = Assumed Excavation
- ⊕ = Replacement tree

NOTES:

- REPLACEMENT TREE LOCATIONS AND SPECIES SELECTION SHOWN ARE SUGGESTIONS ONLY
- REPLACEMENT TREES TO BE A MINIMUM SIZE OF 7cm CALIPER IF DECIDUOUS, OR A MINIMUM HEIGHT OF 3.0m IF CONIFEROUS
- REPLACEMENT TREES MUST BE PLANTED AT LEAST 3.0m AWAY FROM ANOTHER TREE AND MUST MEET MINIMUM DISTANCES AND CLEARANCES IN RELATION TO OTHER FEATURES ON THE LAND AS SPECIFIED IN THE DELTA SUBDIVISION AND DEVELOPMENT STANDARDS BYLAW NO. 7162, 2015
- REPLACEMENT TREES TO CONFORM TO CSLA/CILNA STANDARDS
- REPLACEMENT TREES TO BE PLANTED ACCORDING TO ISA BEST MANAGEMENT PRACTICES

TREE RETENTION AND REPLACEMENT PLAN FOR CONSTRUCTION AT 10890 79 AVENUE, DELTA

SCALE: 1:400
DATE: SEPTEMBER 12, 2025

