

3 MAIN ENTRY NORTH ELEVATION  
1/4" = 1'-0"

4 MAIN ENTRY EAST ELEVATION  
1/4" = 1'-0"

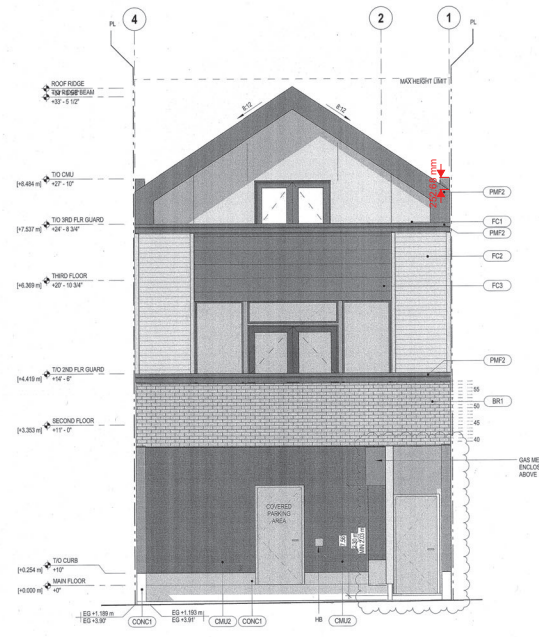
5 MAIN ENTRY SOUTH ELEVATION  
1/4" = 1'-0"

1 BUILDING ELEVATION - WEST (DELTA ST)  
1/4" = 1'-0"

**MATERIAL LEGEND**

- EP1 BENJAMIN MOORE CC-35  
"TECONA/ORS WHITE"
- EP2 BENJAMIN MOORE 2108-20  
"WOODCOCK PUT"
- EP3 BENJAMIN MOORE 2104-40  
"WHALE GRAY"
- EP4 BENJAMIN MOORE HC-6  
"VENEZIA OLIVE"
- PMP2 PREFINISHED METAL FLASHING  
TO MATCH PAINT. EP1  
SERVICED MANUFACTURED "CHARCOAL  
GRAY" OR PRE-APPROVED ALTERNATE
- FC1 FIBER-CEMENT COMPOSITE PANEL  
SMOOTH TEXTURE W/ COLOUR TO MATCH PAINT  
EP1 (LIGATE PANEL JOINT PER SELECTIONS  
HANGEPANEL OR PRE-APPROVED ALTERNATE)
- FC2 FIBER-CEMENT COMPOSITE PANEL W/ 4"  
COURED FACE. SMOOTH TEXTURE AND  
COLOUR TO MATCH PAINT EP1  
HANGEPANEL OR PRE-APPROVED ALTERNATE
- FC3 FIBER-CEMENT COMPOSITE PANEL W/ 11.25"  
EXPOSED FACE COLOUR TO MATCH EP1  
HANGEPANEL OR PRE-APPROVED  
ALTERNATE
- CM1 1" NOMINAL (20MM) LIGHTWEIGHT  
CONCRETE MASONRY UNIT BLOCK  
7.5 SF x 7.5 SF x 15.5 SF w/ SF MORTAR  
JOINTS. TYP. REF. SPEC.
- CM2 2" TO CURB EXCEPT WITH GROUND-FA  
CE FINISH ON EXPOSED SURFACES
- BR1 FUNCTIONAL CLAY BRICK  
7.75" x 2.25" ACTUAL
- CONC1 EXPOSED ARCHITECTURAL CONCRETE  
W/ CLEAR SEALER
- CONC2 CONCRETE FOUNDATION WALL

BUILDING SITTING, HEIGHT,  
ELEVATIONS, EXTERIOR  
DESIGN AND FINISHES MUST  
CONFORM TO APPROVED DEVELOP-  
MENT PERMIT LU03.201



2 BUILDING ELEVATION - EAST (LANE)  
1/4" = 1'-0"

**BMAC**  
TECHNOLOGIES & CONSULTING  
213-3993 Henning Drive  
Burnaby, BC, V5C 6P7  
P: 604-544-7564 | E: info@bmacct.com  
**CODE COMPLIANCE DRAWING**

NO.	DATE	DESCRIPTION
1	21 APR 2016	REVISION
2	21 JUL 2016	REVISION
3	28 AUG 2016	COORDINATION
4	19 AUG 2016	COORDINATION
5	11 OCT 2016	COORDINATION
6	4 NOV 2016	COORDINATION
7	19 DEC 2016	BUILDING PERMIT
8	20 APR 2017	BUILDING PERMIT REVISIONS



**MIZA architects**  
301 JANE STREET VANCOUVER, BC V6C 4E8  
TEL: 604.271.1111 WWW.MIZARCHITECTS.COM  
Copyright reserved. This design and drawing is the intellectual property of the Architect. It is to be used only for the project and site for which it was prepared. No part of this drawing, whether in whole or in part, may be reproduced, stored in a retrieval system, or transmitted in any form or by any means, electronic, mechanical, photocopying, recording, or by any information storage and retrieval system, without the prior written permission of the Architect. The Architect's liability is limited to the professional services provided by the Architect and shall not extend to any other services provided by the Architect or any other party. The Architect's liability shall not be limited by the amount of the fee for the Architect's services.  
**DELTA ST  
MIXED USE**  
DRAW NUMBER: 4078 DELTA STREET, LAMBER, BC, V4K 2T8  
PROJECT CODE: 071819  
CD  
SCALE: 1/4" = 1'-0"  
DATE: 20 APR 2017

ELEVATIONS  
WEST + EAST  
**A401**