








TREE INVENTORY			
ID #	SPECIES	DBH (cm)	TPZ (m)
ci182	SILVER BIRCH	67	4.0
183	WESTERN RED CEDAR	47	2.8
184	CYPRESS	59	3.5
185	SMARAGD CEDAR	23	1.5
186	CHERRY	44	2.6
187	YEW	56	3.3
188	ROSE	26	1.5
os1	CHERRY	21	1.5
os2	DOUGLAS FIR	64	3.8
os3	DOUGLAS FIR	49	2.9
os4	HAWTHORN	40	2.4
os5	FIG	5	1.5
os6	APPLE	8	1.5
os7	CHERRY	11	1.5
os8	APPLE	9	1.5
os9	APPLE	11	1.5
os10	RED ALDER	83	4.9
os11	PLUM	49	2.9
os12	RED ALDER	31	1.8
os13	CYPRESS	47	2.8



### LEGEND

-  =Tree Location
-  =Non Surveyed Tree
-  =Undersize Tree
-  =Remove Tree
-  =Tree Barrier
-  =Assumed Excavation
-  =Replacement tree

TPZ

TREE LOCATION

NOTES:
--------

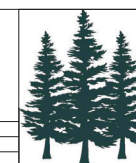
NOTES:

- NON SURVEYED TREE LOCATIONS ARE APPROXIMATE. LOCATIONS CAN ONLY BE CONFIRMED BY A REGISTERED BC LAND SURVEYOR
- RED TPZ INDICATES A POOR HEALTH RATING. ALL OTHERS ARE GOOD OR MODERATE, REFER TO ARBORIST REPORT
- REPLACEMENT TREES ARE RECOMMENDED TO BE SELECTED FROM THE "URBAN TREE LIST FOR METRO VANCOUVER IN A CHANGING CLIMATE": A LIST OF SUITABLE REPLACEMENT TREES IS PROVIDED.
- REPLACEMENT TREES MUST BE PLANTED AT LEAST 3.0m AWAY FROM ANOTHER TREE AN MUST MEET MINIMUM DISTANCES AND CLEARANCES IN RELATION TO OTHER FEATURES ON THE LAND AS SPECIFIED IN THE DELTA SUBDIVISION AND DEVELOPMENT STANDARDS BYLAW NO. 7162, 2015
- REPLACEMENT TREES TO BE A MINIMUM SIZE OF 7cm CAL IF DECIDUOUS, OR A MINIMUM HEIGHT OF 3.0m IF CONIFEROUS
- REPLACEMENT TREES TO CONFORM TO CSLA/CNA LANDSCAPE STANDARDS
- REPLACEMENT TREES ARE RECOMMENDED TO BE PLANTED ACCORDING TO ISA BEST MANAGEMENT PRACTICES

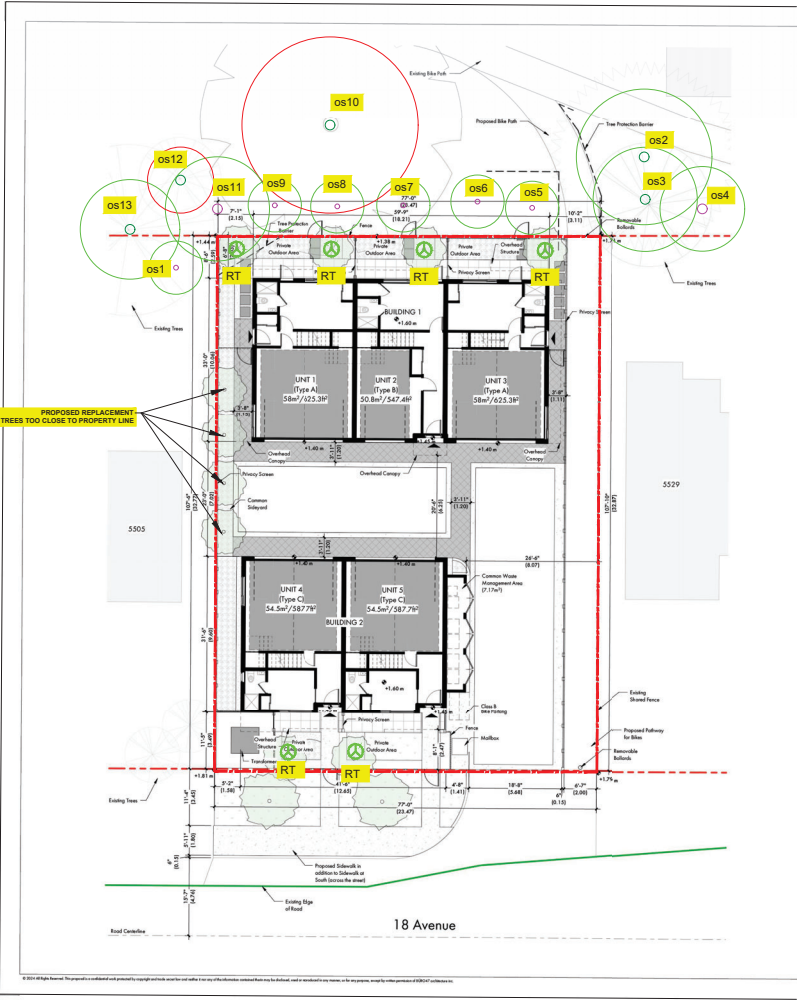
**TREE PLAN FOR  
CONSTRUCTION AT**

5517 18 AVENUE,  
DELTA

SCALE: 1:300  
DATE: APRIL 21, 2025



**WOODRIDGE TREE**  
CONSULTING ARBORISTS LTD.



TREE INVENTORY			
ID #	SPECIES	DBH (cm)	TPZ (m)
os1	CHERRY	21	1.50
os2	DOUGLAS FIR	64	3.84
os3	DOUGLAS FIR	49	2.94
os4	HAWTHORN	40	2.40
os5	FIG	5	1.50
os6	APPLE	8	1.50
os7	CHERRY	11	1.50
os8	APPLE	9	1.50
os9	APPLE	11	1.50
os10	RED ALDER	83	4.98
os11	PLUM	49	2.94
os12	RED ALDER	31	1.86
os13	CYPRESS	47	2.82

SUITABLE REPLACEMENT SPECIES	
SPECIES	SIZE
JAPANESE SNOWBELL	7cm CAL
PERSIAN IRONWOOD	7cm CAL
TUPELO	7cm CAL
NORWAY SPRUCE	3.0m TALL
HINOKI CYPRESS	3.0m TALL
KOREAN FIR	3.0m TALL

**LEGEND**

- = Tree Location
- = Non Surveyed Tree
- = Undersize Tree
- ✗ = Remove Tree
- = Tree Barrier
- - - = Assumed Excavation
- ⊕ = Replacement tree

TPZ

TREE LOCATION

**NOTES:**

- NON SURVEYED TREE LOCATIONS ARE APPROXIMATE. LOCATIONS CAN ONLY BE CONFIRMED BY A REGISTERED BC LAND SURVEYOR
- RED TPZ INDICATES A POOR HEALTH RATING. ALL OTHERS ARE GOOD OR MODERATE, REFER TO ARBORIST REPORT
- REPLACEMENT TREES ARE RECOMMENDED TO BE SELECTED FROM THE "URBAN TREE LIST FOR METRO VANCOUVER IN A CHANGING CLIMATE". A LIST OF SUITABLE REPLACEMENT TREES IS PROVIDED.
- REPLACEMENT TREES MUST BE PLANTED AT LEAST 3.0m AWAY FROM ANOTHER TREE AN MUST MEET MINIMUM DISTANCES AND CLEARANCES IN RELATION TO OTHER FEATURES ON THE LAND AS SPECIFIED IN THE DELTA SUBDIVISION AND DEVELOPMENT STANDARDS BYLAW NO. 7162, 2015
- REPLACEMENT TREES TO BE A MINIMUM SIZE OF 7cm CAL IF DECIDUOUS, OR A MINIMUM HEIGHT OF 3.0m IF CONIFEROUS
- REPLACEMENT TREES TO CONFORM TO CSLA/CILNA LANDSCAPE STANDARDS
- REPLACEMENT TREES ARE RECOMMENDED TO BE PLANTED ACCORDING TO ISA BEST MANAGEMENT PRACTICES

**TREE RETENTION AND REPLACEMENT PLAN FOR CONSTRUCTION AT 5517 18 AVENUE, DELTA**

SCALE: 1:300

DATE: APRIL 21, 2025

**WOODRIDGE TREE**  
CONSULTING ARBORISTS LTD.