

LAYOUT AND MATERIALS GENERAL NOTES

1. DO NOT SCALE DRAWING. LAYOUT AS PER DIMENSIONS NOTED ON LANDSCAPE PLANS. REPORT ANY DISCREPANCIES TO CONSULTANT FOR REVIEW AND RESPONSE.
2. LANDSCAPE DRAWINGS ARE TO BE READ IN CONJUNCTION WITH ARCHITECTURAL AND ENGINEERING DRAWINGS. REPORT ANY DISCREPANCIES TO CONSULTANT FOR REVIEW AND RESPONSE.
3. REFERENCE C.M.E. ENGINEER'S DRAWINGS FOR LAYOUT OF ROAD CURBS AND OUTLETS.

KEY	DESCRIPTION
P1	Concrete Unit Paver Type 1
P2	Concrete Unit Paver Type 2
P3	Concrete Unit Paver Type 3
P4	Hydrated Pavers
P5	Crushed Granular Paving
P6	Wood Fiber Play Surface
P7	River Rock Maintenance Strip
P8	Cast in Place Concrete
P9	Tactile Warning Strip

KEY	DESCRIPTION
H1	Modular Wall
H2	Cast in Place Concrete Stair
H3	Metal Hand Rail
H4	Wooden Fence 1.8m
H5	Entry Signage Monument
H6	Guest Rail

KEY	DESCRIPTION
F1	Bench
F2	Gate
F3	Bike Rack
F4	Bistro Set
F5	Outdoor Sofa
F6	Fire Bowl
F7	Raised Urban Agriculture Planter
F8	Play House
F10	Harvest Table



BEACON HOUSE

55a Street, Tsawwassen, BC

Landscape Architect

LAND AFFAIRS

Architect

RLA Architects Inc.



SCALE: 1:200

REV. DATE DESCRIPTION

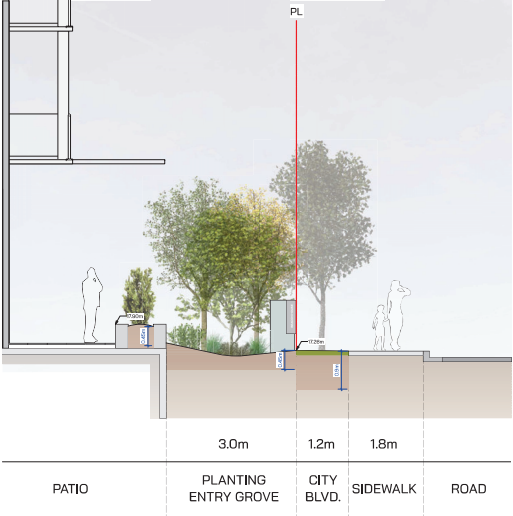
2	2025-02-27	ISSUED IN RESPONSE TO FOR SECTION A.
1	2025-02-03	ISSUED FOR R2/OP
NO.	DATE	ISSUE NOTE
Project Manager	Drawn By	MB, JO
Date	Reviewed By	JO
February 2025		
Project #		2512

Sheet Title

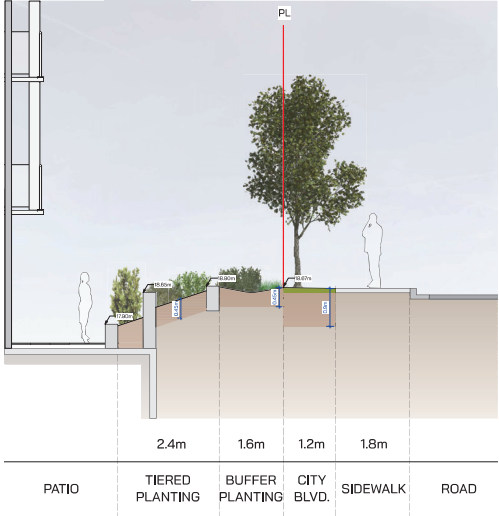
LAYOUT AND MATERIALS PLAN

Sheet No.

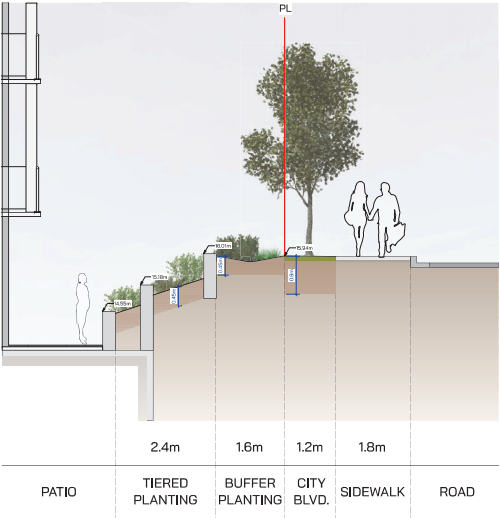
L1-01



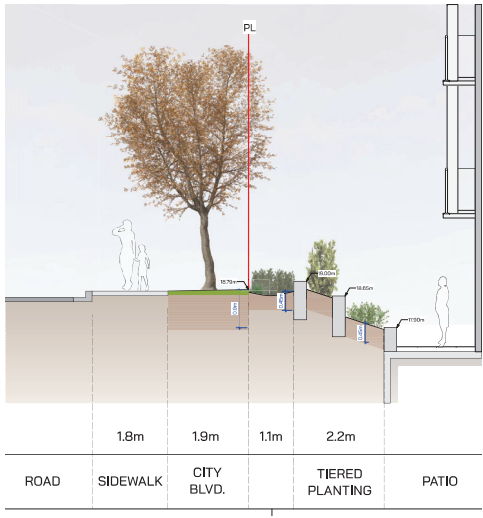
1 SECTION A THROUGH THE ENTRY
Scale: 1:50



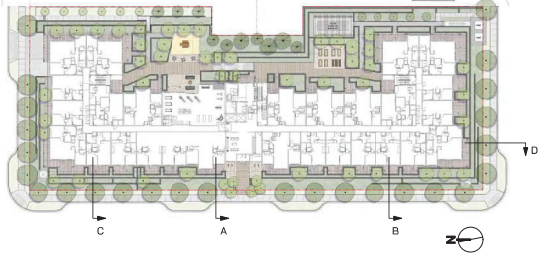
2 SECTION B
Scale: 1:50



3 SECTION C
Scale: 1:50



4 SECTION D
Scale: 1:50



BEACON HOUSE

55a Street, Tsawwassen, BC

Project No.

Landscape Architect

LAND AFFAIRS
Architect
RLA Architects Inc.

REV.	DATE	DESCRIPTION

2	2025-09-07	ISSUED IN RESPONSE TO FOR SECTION A
1	2025-03-03	ISSUED FOR RZDP
NO.	DATE	ISSUE NOTE
Project Manager	Drawn By	MB/LJO
Date	February 2025	Reviewed By
Project ID		JO

Street File

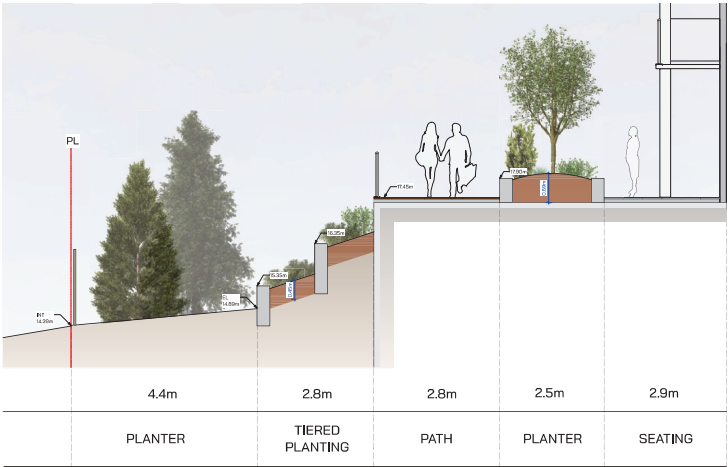
SECTIONS

Street No.

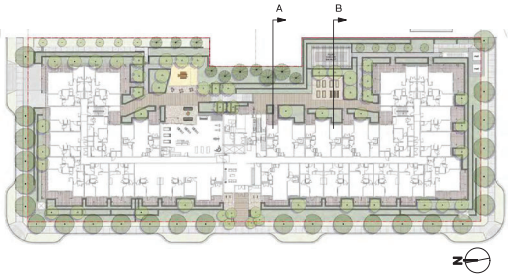
L6-01



1 SECTION A
Scale: 1:50



2 SECTION B
Scale: 1:50



BEACON HOUSE

55a Street, Tsawwassen, BC

LAND AFFAIRS
RLA Architects Inc.

REV.	DATE	DESCRIPTION
2	2025-09-07	ISSUED IN RESPONSE TO FOR SECTION A
1	2025-03-03	ISSUED FOR REFP
NO.	DATE	ISSUE NOTE
Project Manager	Drawn By	MB/LJO
Date	February 2025	Reviewed By
Project ID		JO

SECTIONS
L6-02