



John Oliver Park Master Plan

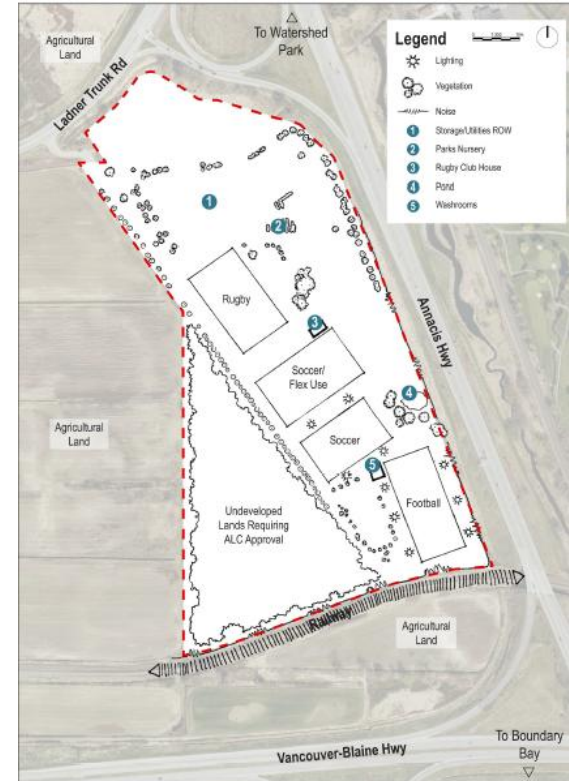
July 28, 2025



John Oliver Park Master Plan



Site Context





Key Considerations

- John Oliver Park is the City's best opportunity to develop a premier outdoor athletic facility and tournament hub
- Proposed program is founded on Sports Field Needs Assessment
 - Built to serve sport needs for future growth while creating a tournament hub
- ALC and transportation/access are primary site challenges
 - The park is in the ALR, with non-farm use approved for the developed portion of the park and passive use approved for the undeveloped portion
 - The City will need to work closely with the Ministry of Transportation and Transit given proximity to Highway 91
- Long term full site build will be costly (\$60M - \$100M) and phasing is recommended

Concept 1



John Oliver Park Master Plan
Concept 1

Concept 2



John Oliver Park Master Plan
Concept 2



Concept 3

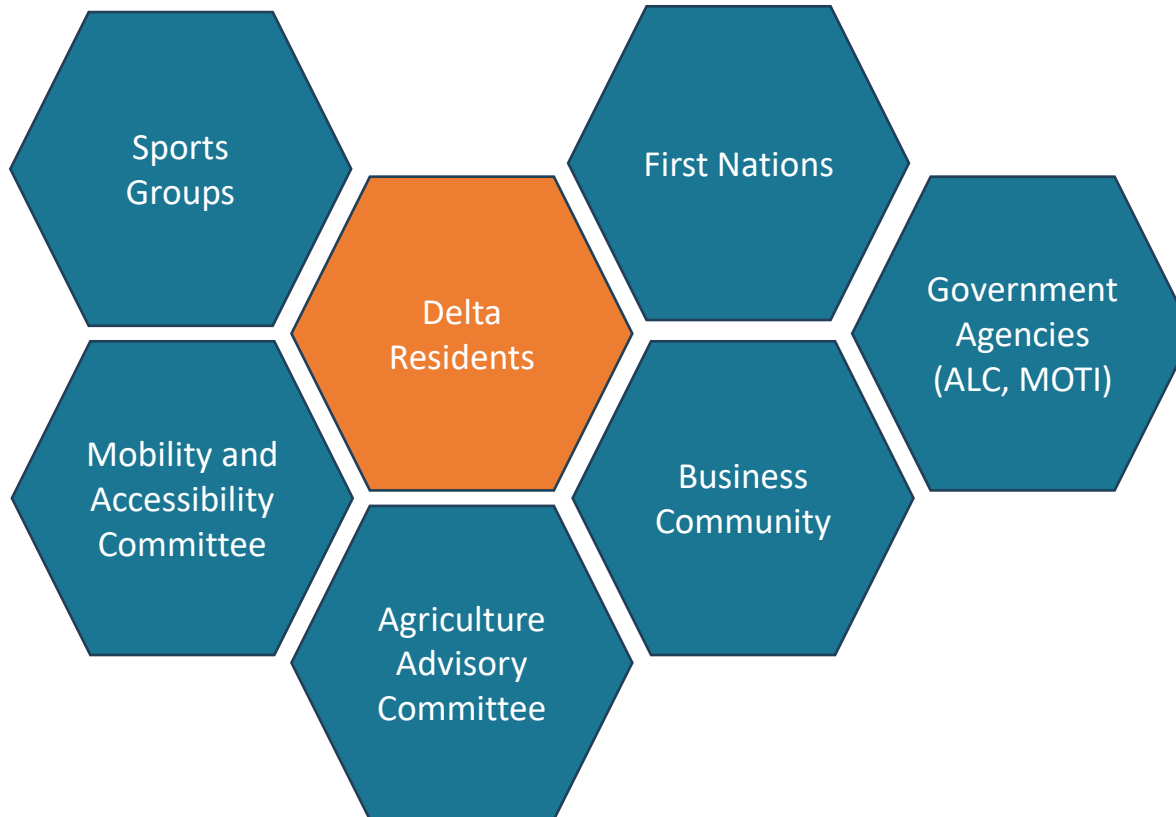


Project Process





Interested or Affected Groups





Engagement Need

- Gather feedback on three concepts to prepare recommended plan
- Confirm needs for “competition hub” are understood and met
- Fulfill requirements for ALC application
- Ensure mobility and accessibility needs are reflected
- Determine interest of First Nations
- Combine with Phase 1 - Parks, Recreation & Culture Plan engagement



Activities (Sept. 10 – Oct. 31)

- Online Feedback Form
- Focus groups with sports organizations
- Notification to government organizations
- Meetings with community partners
- Pop-up events for the public and equity-deserving groups
- Presentations to AAC and MAC Committees
- Council Open Houses

PUBLIC EVENTS (TBC)

- Lights, Ladders and Loaders Pop-Up (Sept. 20)
- North Delta Market Pop-Up
- Southlands Farmer Market Pop-Up
- DIYAfest Pop-Up (Oct. 17)
- Council Open House #1 (Oct. 29)
- Council Open House #2 (Oct. 30)



Next Steps

Recommendations:

- Proceed with community engagement to gather feedback on the concepts
- Proceed with the application process with the ALC for non-farm use of the full site
- Engage with the Ministry of Transportation and Transit to improve the park entrance

Questions?



Facebook
CityofDeltaBC



Twitter
CityofDeltaBC



Instagram
CityofDeltaBC

